



Australian Government

Department of Infrastructure and Transport

Bureau of Infrastructure, Transport and Regional Economics

STATISTICAL REPORT



bitre
Road

**International road safety comparisons
2011**

© Commonwealth of Australia 2013

ISBN: 978-1-922205-25-4

JUNE/INFRA1852

Ownership of intellectual property rights in this publication

Unless otherwise noted, copyright (and any other intellectual property rights, if any) in this publication is owned by the Commonwealth of Australia (referred to below as the Commonwealth).

Disclaimer

The material contained in this publication is made available on the understanding that the Commonwealth is not providing professional advice, and that users exercise their own skill and care with respect to its use, and seek independent advice if necessary.

The Commonwealth makes no representations or warranties as to the contents or accuracy of the information contained in this publication. To the extent permitted by law, the Commonwealth disclaims liability to any person or organisation in respect of anything done, or omitted to be done, in reliance upon information contained in this publication.

Creative Commons licence

With the exception of (a) the Coat of Arms; and (b) the Department of Infrastructure's photos and graphics, copyright in this publication is licensed under a Creative Commons Attribution 3.0 Australia Licence.

Creative Commons Attribution 3.0 Australia Licence is a standard form licence agreement that allows you to copy, communicate and adapt this publication provided that you attribute the work to the Commonwealth and abide by the other licence terms. A summary of the licence terms is available from <http://creativecommons.org/licenses/by/3.0/au/deed.en>. The full licence terms are available from <http://creativecommons.org/licenses/by/3.0/au/legalcode>.

Use of the Coat of Arms

The Department of the Prime Minister and Cabinet sets the terms under which the Coat of Arms is used. Please refer to the Department's Commonwealth Coat of Arms and Government branding web page <http://www.dpmc.gov.au/guidelines/index.cfm#brand> and, in particular, the Guidelines on the use of the Commonwealth Coat of Arms publication.

An appropriate citation for this report is:

Bureau of Infrastructure, Transport and Regional Economics (BITRE), 2013, *Statistical Report – International Road Safety Comparisons 2011*, Canberra ACT.

Contact us

This publication is available in PDF format. All other rights are reserved, including in relation to any Departmental logos or trade marks which may exist. For enquiries regarding the licence and any use of this publication, please contact:

Bureau of Infrastructure, Transport and Regional Economics (BITRE)
Department of Infrastructure and Transport
GPO Box 501, Canberra ACT 2601, Australia

Telephone: (international) +61 2 6274 7210

Fax: (international) +61 2 6274 6855

Email: bitre@infrastructure.gov.au

Website: www.bitre.gov.au

Bureau of Infrastructure, Transport and Regional Economics

International Road Safety Comparisons 2011

Department of Infrastructure and Transport
Canberra, Australia

At a glance

This report presents summaries of road deaths and road death rates for Organisation for Economic Co-operation and Development (OECD) nations and Australian states and territories. The rates allow for a comparison of Australia's road safety performance with that of other OECD nations by accounting for the differing levels of population, motorisation and distances travelled.

- In terms of annual deaths per 100,000 population in 2011 :

Australia's rate of 5.72 was the 14th lowest rate out of the 29 nations with available data. The nations with the two lowest rates were

- The United Kingdom 3.10
- The Netherlands 3.28

Between 2000 and 2011, the annual population-standardised risk of a road crash fatality in Australia declined by a total of 39.7 per cent. Over the same period the OECD median rate fell by 50.2 per cent and the rate corresponding to the OECD 1st quartile (indicating the set of countries with the best rates) fell by 49.8 per cent. The rates for all Australian jurisdictions decreased by between 27 per cent (Northern Territory) and 71 per cent (Australian Capital Territory).

- In terms of annual deaths per 10,000 registered vehicles in 2011 :

Australia's rate of 0.78 was the 11th lowest rate out of the 21 nations with available data. The nations with the two lowest rates were

- Iceland 0.46
- The Netherlands 0.55

Annual road deaths in Australia, relative to vehicle ownership, declined, between 2000 and 2011 by a total of 45.6 per cent. The median rate for OECD nations declined by 58.7 per cent, and the 1st quartile declined by over 59 per cent. Australian jurisdictions achieved reductions of between 33 per cent (Western Australia) and 74 per cent (Australian Capital Territory).

- In terms of annual deaths per 100 million vehicle kilometres travelled in 2011 :

Australia's rate of 0.56 was 7th lowest rate out of 14 nations with available data. The nations with the two lowest rates were

- Sweden 0.38
- Iceland 0.38

Between 2000 and 2011, Australia's rate declined by a total of 39.4 per cent whilst the OECD median declined by 49.6 per cent. For Australian jurisdictions, the reduction ranged from 27 per cent (Northern Territory) to 71 per cent (Australian Capital Territory).

Data definitions and sources

International data

The International Road Traffic Accident Database (IRTAD) is the main source for data presented in this report. IRTAD is maintained by the Joint Transport Research Centre (JTRC) of the OECD and the International Transport Forum. Each year member nations supply the JTRC with their most recent data, which may include revisions to historical data. The information provided in this document is subject to revision with each successive report in the series. Further information on IRTAD is available at <<http://internationaltransportforum.org/irtad/index.html>>

Most nations that supply road crash data to IRTAD comply with the definition of a road crash death given by the Convention of Road Traffic (Vienna, 1968), which is:

“Any person who was killed outright or who died within 30 days as a result of the accident.”

Since 2005, among the nations covered in this report, only Portugal has not applied the above definition. Nations that do not comply, or did not comply in earlier years, have had correction factors applied to their death figures by IRTAD to ensure consistency within the ongoing database.

In a small number of cases, where recent data were not available from IRTAD, data were obtained from the country’s relevant government agency.

Australian data

Australian road death data were extracted from the Department of Infrastructure and Transport’s online *Australian Road Deaths Database* available at <http://www.bitre.gov.au/statistics/safety/fatal_road_crash_database.aspx>

Data for population and registered vehicles were obtained from the Australian Bureau of Statistics. Estimates of vehicle kilometres travelled were produced by the Bureau of Infrastructure, Transport and Regional Economics (BITRE).

Acknowledgements

BITRE gratefully acknowledges the provision of police road crash data from: Transport for NSW, New South Wales; VicRoads, Victoria; Department of Transport and Main Roads, Queensland; Department for Planning, Transport & Infrastructure, South Australia; Western Australia Police, Western Australia; Department of Infrastructure, Energy and Resources, Tasmania; Department of Lands, Planning and the Environment, Northern Territory; and Territory & Municipal Services, Australian Capital Territory.

Contents

At a glance	iii
Data definitions and sources	iv
Rates per Population	I
Rates per Registered Vehicle	5
Rates per Vehicle Kilometres travelled	9

Tables

Table 1	Annual road deaths per 100,000 population — OECD nations and Australian states/territories, 2011	1
Table 2	Annual road deaths per 100,000 population — OECD nations and Australian states/territories, 1990 and 1999 to 2011	3
Table 3	Annual road deaths per 10,000 registered vehicles — OECD nations and Australian states/territories, 2011	5
Table 4	Annual road deaths per 10,000 registered vehicles — OECD nations and Australian states/territories, 1990 and 1999 to 2011	7
Table 5	Annual road deaths per 100 million vehicle kilometres travelled — OECD nations and Australian states/territories, 2011	9
Table 6	Annual road deaths per 100 million vehicle kilometres travelled — OECD nations and Australian states/territories, 1990 and 1999 to 2011	11

Figures

Figure 1	Annual road deaths per 100,000 population — OECD nations and Australian states/territories, 2011	2
Figure 2	Annual road deaths per 100,000 population — OECD quartiles and Australia, 1999 to 2011	4
Figure 3	Annual road deaths per 10,000 registered vehicles — OECD nations and Australian states/territories, 2011	6
Figure 4	Annual road deaths per 10,000 registered vehicles — OECD quartiles and Australia, 1999 to 2011	8
Figure 5	Annual road deaths per 100 million vehicle kilometres travelled — OECD nations and Australian states/territories, 2011	10
Figure 6	Annual road deaths per 100 million vehicle kilometres travelled — OECD quartiles and Australia, 1999 to 2011	12

Road deaths per population

The number of road deaths per population is a measure of the public health risk associated with road trauma.

OECD nations, 2011

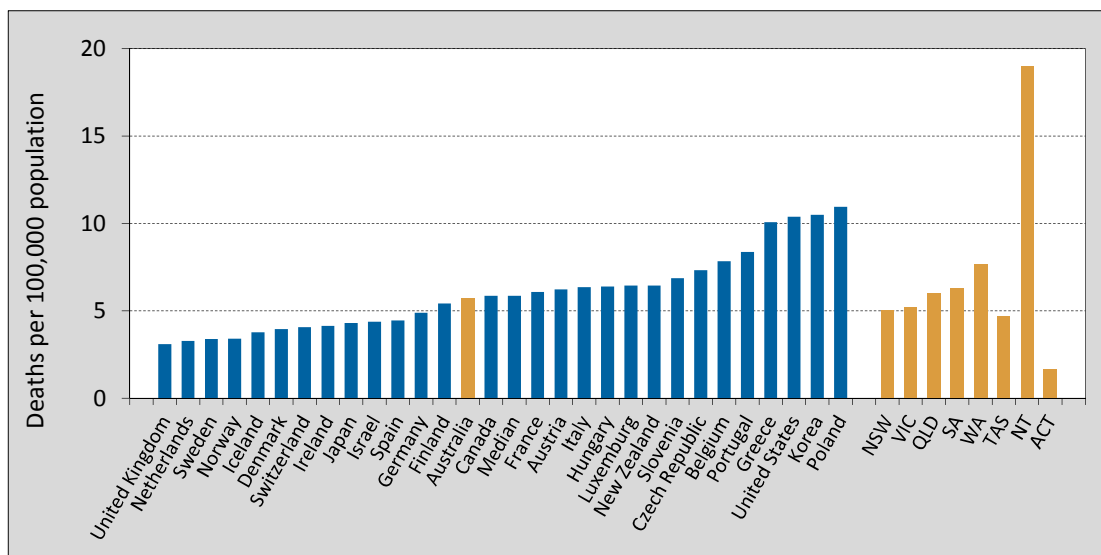
Table 1 Annual road deaths per 100,000 population — OECD nations and Australian states/territories, 2011

<i>Nation</i>	<i>Road deaths</i>	<i>Population (000s)</i>	<i>Deaths per 100,000 population</i>
United Kingdom	1,960	63,233	3.10
Netherlands	546	16,656	3.28
Sweden	319	9,416	3.39
Norway	168	4,920	3.41
Iceland	12	318	3.77
Denmark	220	5,561	3.96
Switzerland	320	7,870	4.07
Ireland	186	4,481	4.15
Japan	5,507	127,799	4.31
Israel	341	7,766	4.39
Spain	2,060	46,153	4.46
Germany	4,009	81,752	4.90
Finland	292	5,375	5.43
Australia	1,277	22,324	5.72
Canada ^a	2,025	34,484	5.87
median			5.87
France	3,963	65,027	6.09
Austria	523	8,404	6.22
Italy	3,860	60,626	6.37
Hungary	638	9,986	6.39
Luxemburg	33	512	6.45
New Zealand	284	4,405	6.45
Slovenia	141	2,050	6.88
Czech Republic	773	10,533	7.34
Belgium	858	10,951	7.83
Portugal	891	10,637	8.38
Greece	1,141	11,312	10.09
United States ^b	32,367	311,592	10.39
Korea	5,229	49,779	10.50
Poland	4,189	38,200	10.97
NSW	364	7,211	5.05
VIC	287	5,535	5.19
QLD	269	4,474	6.01
SA	103	1,638	6.29
WA	180	2,352	7.65
TAS	24	511	4.69
NT	44	231	19.02
ACT	6	368	1.63

a 2011 data for Canada is preliminary and is obtained from national government sources.

b 2011 data for United States is obtained from national government sources.

Figure I Annual road deaths per 100,000 population — OECD nations and Australian states/territories, 2011

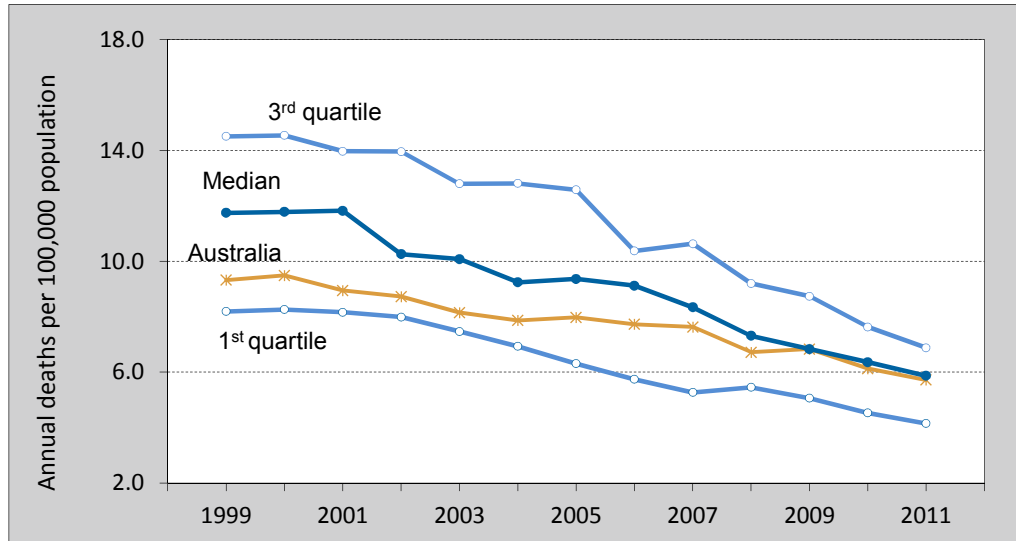


OECD nations, 1990 to 2011

Table 2 Annual road deaths per 100,000 population — OECD nations and Australian states/territories, 1990 and 1999 to 2011

<i>Nation</i>	<i>1990</i>	<i>1999</i>	<i>2000</i>	<i>2001</i>	<i>2002</i>	<i>2003</i>	<i>2004</i>	<i>2005</i>	<i>2006</i>	<i>2007</i>	<i>2008</i>	<i>2009</i>	<i>2010</i>	<i>2011</i>
United Kingdom	9.4	6.1	6.1	6.1	6.0	6.1	5.6	5.5	5.4	5.0	4.3	3.8	3.1	3.1
Netherlands	9.2	6.9	6.8	6.2	6.1	6.4	5.0	4.6	4.5	4.3	4.1	3.9	3.2	3.3
Sweden	9.1	6.6	6.7	6.2	6.0	5.9	5.4	4.9	4.9	5.2	4.3	3.9	2.9	3.4
Norway	7.8	6.8	7.6	6.1	6.9	6.2	5.6	4.8	5.2	5.0	5.4	4.4	4.3	3.4
Iceland	9.5	7.6	11.5	8.5	10.1	8.0	7.9	6.5	10.3	4.9	3.8	5.3	2.5	3.8
Denmark	12.4	9.7	9.3	8.1	8.6	8.0	6.8	6.1	5.6	7.5	7.4	5.5	4.6	4.0
Switzerland	13.9	8.2	8.3	7.6	7.1	7.5	6.9	5.5	5.0	5.1	4.7	4.5	4.2	4.1
Ireland	13.6	11.0	11.0	10.7	9.6	8.4	8.8	9.7	8.6	7.8	6.3	5.4	4.7	4.2
Japan	11.8	8.2	8.2	7.9	7.6	7.0	6.7	6.3	5.7	5.2	4.8	4.6	4.5	4.3
Israel	8.7	7.5	7.1	8.2	7.8	6.6	6.8	6.3	5.7	5.3	5.6	4.2	4.6	4.4
Spain	23.2	14.5	14.5	13.8	12.9	12.8	11.0	10.2	9.3	8.6	6.9	5.9	5.4	4.5
Germany	14.0	9.5	9.1	8.5	8.3	8.0	7.1	6.5	6.2	6.0	5.5	5.1	4.5	4.9
Finland	13.1	8.4	7.7	8.4	8.0	7.3	7.2	7.2	6.4	7.2	6.5	5.2	5.1	5.4
Australia	13.7	9.3	9.5	8.9	8.7	8.1	7.9	8.0	7.7	7.6	6.7	6.8	6.1	5.7
Canada ^a	14.3	9.8	9.5	8.9	9.3	8.8	8.6	9.0	9.1	8.4	7.3	6.6	6.5	5.9
France	19.8	14.5	13.7	13.8	12.8	10.1	9.2	8.7	7.7	7.5	6.9	6.8	6.4	6.1
Austria	20.3	13.5	12.2	11.9	11.9	11.5	10.8	9.4	8.8	8.3	8.2	7.6	6.6	6.2
Italy	12.4	11.8	12.4	12.5	12.3	11.5	10.6	10.0	9.7	8.7	7.9	7.1	6.8	6.4
Hungary	23.4	12.9	11.8	12.2	14.0	13.1	12.8	12.7	12.9	12.2	9.9	8.2	7.4	6.4
Luxemburg	18.8	13.5	17.5	16.0	14.0	11.8	11.0	10.2	9.2	9.7	7.4	9.7	6.4	6.5
New Zealand	21.4	13.4	12.0	11.8	10.3	11.5	10.7	9.8	9.5	10.0	8.6	8.9	8.6	6.5
Slovenia	25.9	16.9	15.8	14.0	13.5	12.1	13.7	12.9	13.1	14.6	10.6	8.4	6.7	6.9
Czech Republic	12.5	14.1	14.5	13.0	14.0	14.2	13.5	12.6	10.4	11.9	10.4	8.6	7.6	7.3
Belgium	19.9	13.7	14.4	14.5	13.1	11.7	11.2	10.4	10.2	10.1	8.9	8.8	7.8	7.8
Portugal	31.2	23.2	20.0	17.9	17.8	16.3	13.6	13.0	10.6	10.6	9.2	8.7	8.8	8.4
Greece	20.2	20.1	18.7	17.2	14.9	14.6	15.1	15.0	14.9	14.4	13.9	12.9	11.1	10.1
United States ^b	17.9	15.3	14.9	14.8	15.0	14.8	14.6	14.7	14.3	13.7	12.3	11.1	10.6	10.4
Korea	33.1	23.1	21.8	17.1	15.2	15.1	13.7	13.2	13.1	12.7	12.1	12.0	11.3	10.5
Poland	19.2	17.4	16.3	14.3	15.3	14.8	15.0	14.3	13.8	14.7	14.3	12.0	10.2	11.0
NSW	13.7	9.0	9.3	8.0	8.5	8.1	7.6	7.5	7.3	6.3	5.4	6.4	5.7	5.0
VIC	12.5	8.2	8.6	9.2	8.2	6.7	6.9	6.9	6.6	6.4	5.7	5.4	5.3	5.2
QLD	13.8	9.0	8.9	8.9	8.7	8.1	8.0	8.3	8.2	8.6	7.7	7.6	5.6	6.0
SA	15.8	10.1	11.0	10.1	10.1	10.3	9.0	9.5	7.5	7.8	6.2	7.4	7.2	6.3
WA	12.2	11.8	11.3	8.7	9.3	9.2	9.0	8.1	9.7	11.1	9.4	8.5	8.4	7.7
TAS	15.4	11.2	9.1	12.9	7.8	8.6	12.0	10.5	11.2	9.1	7.8	12.5	6.1	4.7
NT	41.5	25.4	26.1	25.3	27.6	26.5	17.3	26.7	21.8	27.0	33.9	13.2	21.3	19.0
ACT	9.2	6.1	5.7	5.0	3.1	3.4	2.7	7.9	3.9	4.1	4.0	3.4	5.3	1.6

Figure 2 Annual road deaths per 100,000 population — OECD quartiles and Australia, 1999 to 2011



Road deaths per registered vehicle

The number of road deaths per registered vehicle is a means of comparing road deaths among nations by taking into account their different levels of motorisation.

OECD nations, 2011

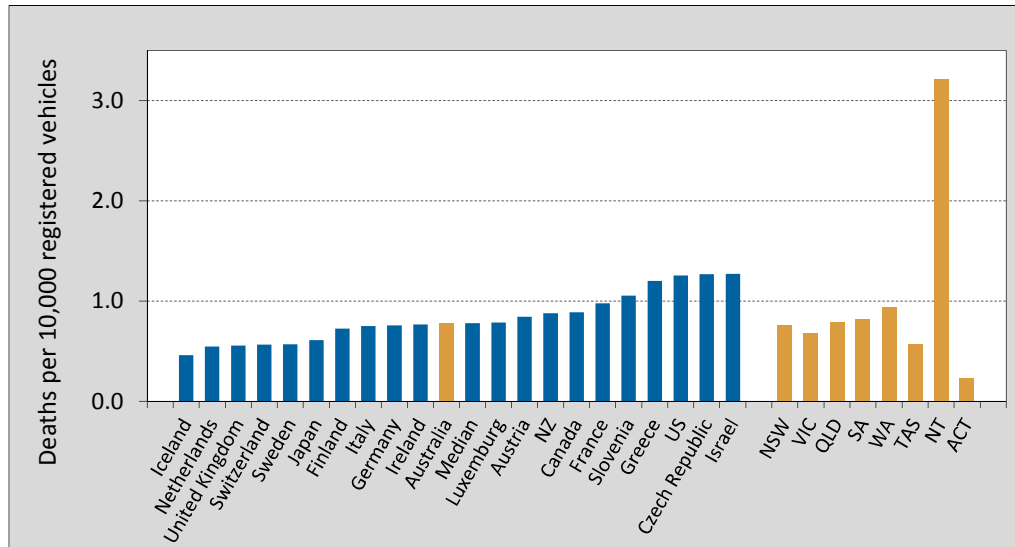
Table 3 Annual road deaths per 10,000 registered vehicles — OECD nations and Australian states/territories, 2011

<i>Nation</i>	<i>Road deaths</i>	<i>Total registered vehicles (10,000)</i>	<i>Deaths per 10,000 registered vehicles</i>
Iceland	12	26.1	0.46
Netherlands	546	998.0	0.55
United Kingdom	1,960	3,528.2	0.56
Switzerland	320	564.7	0.57
Sweden	319	561.8	0.57
Japan	5,507	9,028.8	0.61
Finland	292	402.0	0.73
Italy	3,860	5,130.9	0.75
Germany	4,009	5,294.5	0.76
Ireland	186	242.5	0.77
Australia	1,277	1,636.8	0.78
median			0.78
Luxemburg	33	41.9	0.79
Austria	523	620.5	0.84
New Zealand	284	323.4	0.88
Canada ^a	2,025	2,281.1	0.89
France	3,963	4,045.7	0.98
Slovenia	141	133.8	1.05
Greece	1,141	950.4	1.20
United States ^b	32,367	25,751.2	1.26
Czech Republic	773	609.9	1.27
Israel	341	268.3	1.27
NSW	364	477.8	0.76
VIC	287	419.8	0.68
QLD	269	340.2	0.79
SA	103	126.2	0.82
WA	180	191.3	0.94
TAS	24	41.9	0.57
NT	44	13.7	3.21
ACT	6	25.9	0.23

a 2011 data for Canada is preliminary and is obtained from national government sources.

b 2011 data for United States is obtained from national government sources.

Figure 3 Annual road deaths per 10,000 registered vehicles —
OECD nations and Australian states/territories, 2011

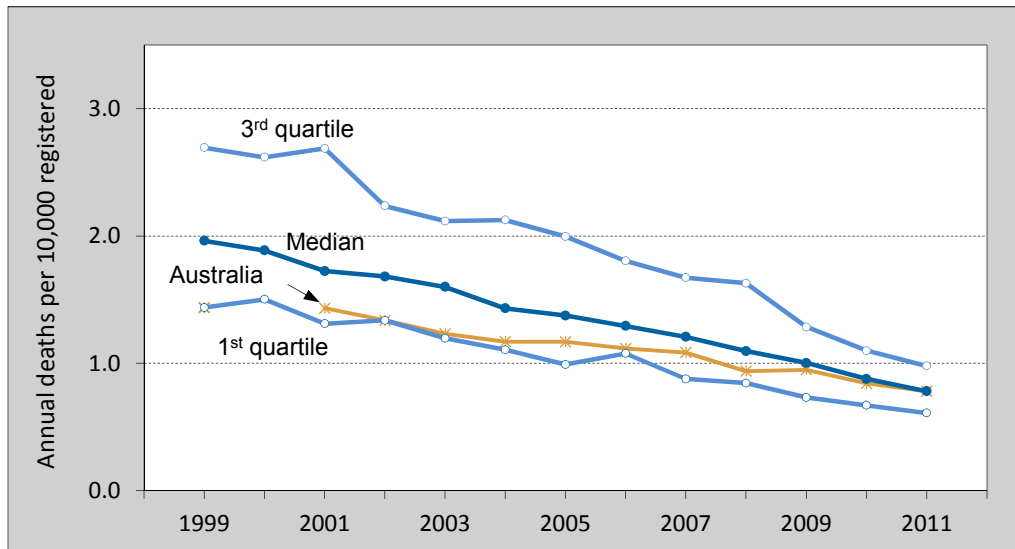


OECD nations, 1990 to 2011

Table 4 Annual road deaths per 10,000 registered vehicles — OECD nations and Australian states/territories, 1990 and 1999 to 2011

<i>Nation</i>	<i>1990</i>	<i>1999</i>	<i>2000</i>	<i>2001</i>	<i>2002</i>	<i>2003</i>	<i>2004</i>	<i>2005</i>	<i>2006</i>	<i>2007</i>	<i>2008</i>	<i>2009</i>	<i>2010</i>	<i>2011</i>
Iceland	1.7	1.3	1.8	1.3	1.5	1.1	1.1	0.9	1.3	0.6	0.5	0.7	0.3	0.5
Netherlands	2.2	1.4	1.3	1.2	1.1	1.2	0.9	0.8	0.8	0.8	0.7	0.7	0.5	0.5
United Kingdom	2.1	1.2	1.2	1.2	1.1	1.1	1.0	1.0	1.0	0.9	0.8	0.7	0.5	0.6
Switzerland	2.2	1.2	1.2	1.1	1.0	1.1	1.0	0.8	0.7	0.7	0.7	0.6	0.6	0.6
Sweden	1.7	1.2	1.2	1.1	1.1	1.0	0.9	0.8	0.8	0.9	0.7	0.6	0.5	0.6
Japan	1.9	1.2	1.2	1.1	1.1	1.0	0.9	0.9	0.8	0.7	0.7	0.6	0.6	0.6
Finland	2.8	1.7	1.5	1.6	1.5	1.4	1.3	1.3	1.1	1.2	1.0	0.8	0.7	0.7
Italy	2.1	1.6	1.6	1.6	1.5	1.4	1.3	1.3	1.2	1.1	0.9	0.8	0.8	0.8
Germany	2.6	1.5	1.4	1.3	1.2	1.2	1.0	1.0	0.9	0.9	0.9	0.8	0.7	0.8
Ireland	4.5	2.6	2.5	2.3	2.0	1.7	1.8	1.9	1.6	1.4	1.1	1.0	0.9	0.8
Australia	2.3	1.4	-	1.4	1.3	1.2	1.2	1.2	1.1	1.1	0.9	0.9	0.8	0.8
Luxemburg	3.3	1.9	2.4	2.1	1.8	1.5	1.4	1.3	1.1	1.2	0.9	-	-	0.8
Austria	3.7	2.0	1.8	1.7	1.7	1.7	1.6	1.4	1.3	1.2	1.2	1.1	0.9	0.8
New Zealand	3.3	2.0	1.8	1.7	1.5	1.6	1.5	1.3	1.3	1.3	1.1	1.2	1.2	0.9
Canada	2.3	1.7	1.6	1.5	1.6	1.5	1.4	1.5	1.5	1.3	1.2	1.0	1.0	0.9
France	3.6	2.4	2.3	2.2	2.0	1.6	1.5	1.4	1.2	1.2	1.1	1.1	1.0	1.0
Slovenia	6.9	3.6	3.2	2.8	2.6	2.2	2.5	2.3	2.2	2.4	1.7	1.3	1.0	1.1
Greece	7.4	3.4	3.1	2.7	2.2	2.1	2.1	2.0	1.9	1.8	1.7	1.5	1.3	1.2
Czech Republic	3.3	2.9	3.2	2.9	3.0	3.0	2.8	2.5	2.0	2.2	1.9	1.5	1.3	1.3
Israel	4.1	2.7	2.4	2.8	2.6	2.2	2.3	2.1	1.9	1.7	1.7	1.3	1.4	1.3
United States ^b	2.4	2.0	1.9	1.9	1.9	1.8	1.8	1.8	1.7	1.6	1.4	1.3	1.3	1.3
Canada ^a	2.3	1.7	1.6	1.5	1.6	1.5	1.4	1.5	1.5	1.3	1.2	1.0	1.0	-
Spain	5.1	2.3	2.2	2.1	2.0	2.0	1.7	1.5	1.3	1.2	0.9	0.8	0.7	-
Poland	8.1	5.1	4.5	3.8	3.8	3.5	3.4	3.2	2.9	2.9	2.5	2.1	1.7	-
Portugal	13.4	4.3	3.9	3.4	3.3	3.0	2.5	2.3	1.8	1.8	1.6	1.5	-	-
Norway	1.4	1.1	1.2	1.0	1.1	1.0	0.9	0.7	0.8	0.7	0.8	-	-	-
Hungary	11.2	4.9	4.4	4.4	4.8	4.2	3.9	3.8	3.8	3.5	2.7	-	-	-
Korea	28.9	7.2	6.9	5.1	4.4	4.1	3.6	3.4	3.3	3.2	2.9	-	-	-
Denmark	2.9	2.1	2.0	1.7	1.8	1.7	1.4	1.3	1.2	1.5	-	-	-	-
NSW	2.5	1.6	-	1.4	1.5	1.4	1.3	1.2	1.2	1.0	0.8	1.0	0.9	0.8
VIC	2.1	1.2	-	1.3	1.2	0.9	1.0	0.9	0.9	0.9	0.8	0.7	0.7	0.7
QLD	2.3	1.4	-	1.4	1.3	1.2	1.2	1.2	1.2	1.2	1.0	1.0	0.7	0.8
SA	2.6	1.5	-	1.5	1.4	1.5	1.3	1.3	1.0	1.1	0.8	1.0	1.0	0.8
WA	1.9	1.6	-	1.2	1.3	1.3	1.2	1.1	1.2	1.4	1.2	1.0	1.0	0.9
TAS	2.4	1.6	-	1.8	1.1	1.2	1.7	1.4	1.5	1.2	1.0	1.6	0.8	0.6
NT	8.6	4.7	-	4.9	5.3	5.1	3.3	5.0	3.9	4.9	6.1	2.3	3.6	3.2
ACT	1.6	1.0	-	0.8	0.5	0.5	0.4	1.2	0.6	0.6	0.6	0.5	0.8	0.2

Figure 4 Annual road deaths per 10,000 registered vehicles — OECD quartiles and Australia, 1999 to 2011



Road deaths per vehicle kilometres travelled

The number of road deaths per vehicle kilometres travelled is a risk measure which takes account of the estimated amount of vehicle travel.

OECD nations, 2011

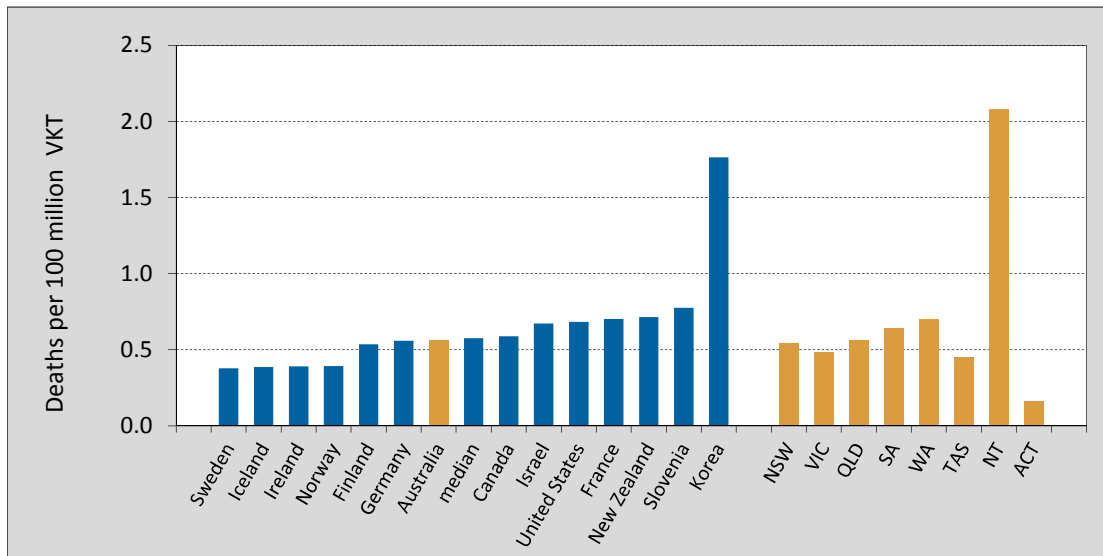
Table 5 Annual road deaths per 100 million vehicle kilometres travelled
— OECD nations and Australian states/territories, 2011

<i>Nation</i>	<i>Road deaths</i>	<i>Total VKT (100 million)</i>	<i>Deaths per 100 million VKTs</i>
Sweden	319	844	0.38
Iceland	12	31	0.39
Ireland	186	476	0.39
Norway	168	429	0.39
Finland	292	545	0.54
Germany	4,009	7,176	0.56
Australia	1,277	2,272	0.56
median			0.58
Canada ^a	2,025	3,438	0.59
Israel	341	507	0.67
United States ^b	32,367	47,411	0.68
France	3,963	5,650	0.70
New Zealand	284	398	0.71
Slovenia	141	182	0.77
Korea	5,229	2,965	1.76
NSW	364	670	0.54
VIC	287	595	0.48
QLD	269	479	0.56
SA	103	161	0.64
WA	180	257	0.70
TAS	24	54	0.45
NT	44	21	2.08
ACT	6	37	0.16

a 2011 data for Canada is preliminary and is obtained from national government sources.

b 2011 data for United States is obtained from national government sources.

Figure 5 Annual road deaths per 100 million vehicle kilometres travelled
— OECD nations and Australian states/territories, 2011

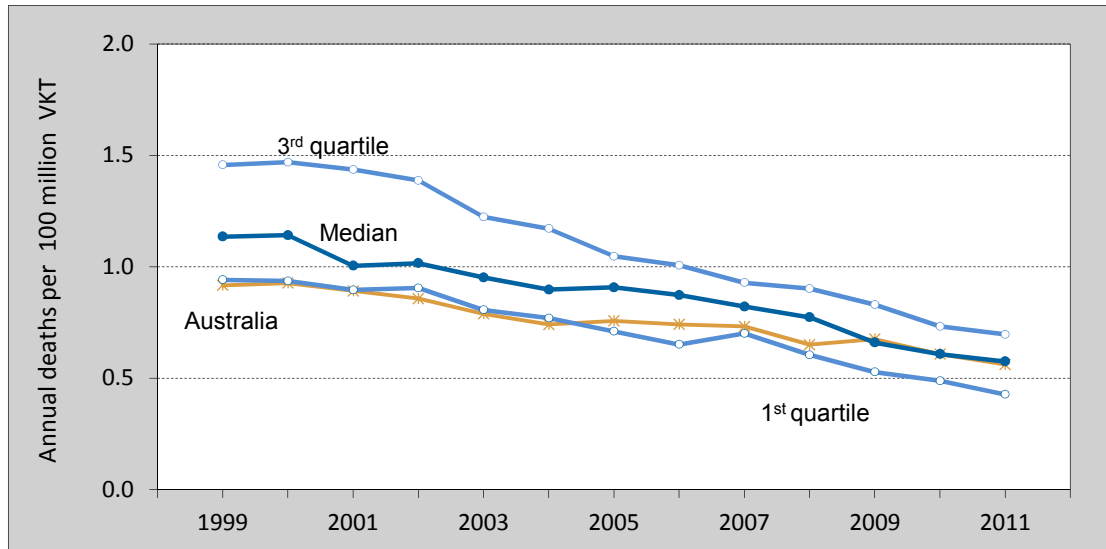


OECD nations, 1990 to 2011

Table 6 Annual road deaths per 100 million vehicle kilometres travelled — OECD nations and Australian states/territories, 1990 and 1999 to 2011

Nation	1990	1999	2000	2001	2002	2003	2004	2005	2006	2007	2008	2009	2010	2011
Sweden	1.2	0.8	0.8	0.8	0.7	0.7	0.6	0.6	0.6	0.6	0.5	0.4	0.3	0.4
Iceland	1.5	0.9	1.4	1.0	1.2	0.9	0.9	0.7	1.0	0.5	0.4	0.5	0.3	0.4
Ireland	1.9	1.2	1.2	1.1	1.0	0.9	0.9	0.9	0.8	0.7	0.6	0.5	0.4	0.4
Norway	1.2	1.0	1.0	0.8	0.9	0.8	0.7	0.6	0.7	0.6	0.6	0.5	0.5	0.4
Finland	1.6	0.9	0.8	0.9	0.9	0.8	0.7	0.7	0.6	0.7	0.6	0.5	0.5	0.5
Germany	2.0	1.2	1.1	1.0	1.0	1.0	0.8	0.8	0.7	0.7	0.6	0.6	0.5	0.6
Australia	1.4	0.9	0.9	0.9	0.9	0.8	0.7	0.8	0.7	0.7	0.7	0.7	0.6	0.6
Canada ^a	-	-	0.9	0.9	0.9	0.9	0.9	0.9	0.9	0.8	0.7	0.7	0.6	0.6
Israel	2.2	1.3	1.2	1.4	1.4	1.1	1.2	1.0	0.9	0.8	0.9	0.6	0.7	0.7
United States ^b	1.3	1.0	0.9	0.9	0.9	0.9	0.9	0.9	0.9	0.8	0.8	0.7	0.7	0.7
France	2.6	1.6	1.6	1.5	1.4	1.1	1.0	1.0	0.8	0.8	0.8	0.8	0.7	0.7
New Zealand	-	-	1.4	1.3	1.1	1.2	1.1	1.0	1.0	1.0	0.9	1.0	0.9	0.7
Slovenia	6.5	2.9	2.7	2.3	2.2	1.7	1.8	1.7	1.6	1.7	1.2	1.0	0.8	0.8
Korea	-	-	4.9	3.3	2.8	2.6	2.3	1.8	1.9	1.9	1.8	2.0	1.9	1.8
United Kingdom	-	-	0.7	0.7	0.7	0.7	0.7	0.7	0.6	0.6	-	0.5	0.4	-
Netherlands	1.4	0.9	0.9	0.8	0.8	0.8	-	-	-	-	0.5	0.5	0.4	-
Switzerland	1.9	1.1	1.1	1.0	0.9	1.0	0.9	0.7	0.6	0.6	0.6	0.6	0.5	-
Denmark	1.7	1.1	1.1	0.9	1.0	-	0.8	0.7	0.6	0.8	0.9	0.7	0.6	-
Austria	2.8	1.5	1.5	1.4	1.4	1.3	1.3	1.1	1.0	0.9	0.9	0.8	0.7	-
Belgium	2.8	1.6	1.6	1.6	1.5	1.3	1.2	1.1	1.1	1.1	1.0	1.0	0.9	-
Czech Republic	4.8	3.6	3.7	3.2	3.3	3.2	2.9	2.6	2.1	2.3	1.9	1.6	1.6	-
Japan	2.3	1.4	1.3	1.3	1.2	1.1	1.1	1.0	1.0	0.9	0.8	0.8	-	-
NSW	1.6	1.0	1.0	0.9	0.9	0.9	0.8	0.8	0.8	0.7	0.6	0.7	0.6	0.5
VIC	1.2	0.8	0.8	0.9	0.8	0.6	0.6	0.6	0.6	0.6	0.5	0.5	0.5	0.5
QLD	1.4	0.8	0.8	0.8	0.8	0.7	0.7	0.7	0.7	0.8	0.7	0.7	0.5	0.6
SA	1.7	1.0	1.1	1.0	1.0	1.0	0.9	0.9	0.8	0.8	0.6	0.8	0.7	0.6
WA	1.2	1.0	1.0	0.8	0.8	0.8	0.8	0.7	0.9	1.0	0.8	0.7	0.8	0.7
TAS	1.7	1.1	0.9	1.3	0.8	0.8	1.1	1.0	1.1	0.9	0.7	1.2	0.6	0.4
NT	4.7	2.7	2.8	2.8	3.1	2.9	1.9	2.9	2.4	3.0	3.7	1.5	2.4	2.1
ACT	1.0	0.6	0.6	0.5	0.3	0.3	0.3	0.7	0.4	0.4	0.4	0.3	0.5	0.2

Figure 6 Annual road deaths per 100 million vehicle kilometres travelled — OECD quartiles and Australia, 1999 to 2011



References

1. Joint Transport Research Centre of the OECD and the International Transport Forum, International Road Traffic Accident Database (IRTAD).
< <http://internationaltransportforum.org/irtad/index.html> >
Accessed 11 June 2013
2. Bureau of Infrastructure, Transport and Regional Economics, Australian Road Deaths Database.
< http://www.bitre.gov.au/statistics/safety/fatal_road_crash_database.aspx >
Accessed 11 June 2013
3. Bureau of Infrastructure, Transport and Regional Economics, Information sheet 44, (Dec 2012)
4. Australian Bureau of Statistics, Motor Vehicle Census, 9309.0 (Aug 2012).
5. Australian Bureau of Statistics, Australian Demographic Statistics, 3101.0 (Mar 2013).
6. USA data for 2011 sourced from National Highway Traffic Safety Administration (NHTSA).
< <http://www-fars.nhtsa.dot.gov/Main/index.aspx> >
7. Canada data for 2011 is provisional. Provided by Transport Canada.