

# **Demographic Report on Clients Allocated the Ministry of Health's Disability Support Services**

---

as at September 2014

Citation: Ministry of Health. 2016. *Demographic Report on Clients Allocated the Ministry of Health's Disability Support Services: as at September 2014*.  
Wellington: Ministry of Health.

Published in June 2016  
by the Ministry of Health  
PO Box 5013, Wellington 6140, New Zealand

ISBN 978-0-947515-24-9 (online)  
HP 6429

This document is available at [health.govt.nz](http://health.govt.nz)



MANATŪ HAUORA



This work is licensed under the Creative Commons Attribution 4.0 International licence. In essence, you are free to: share ie, copy and redistribute the material in any medium or format; adapt ie, remix, transform and build upon the material. You must give appropriate credit, provide a link to the licence and indicate if changes were made.

---

# Contents

<b>Executive summary</b>	<b>ix</b>
Introduction	ix
Overall Client demographics	ix
Disability support services	x
Disability types	xi
Trends	xii
<b>Introduction</b>	<b>1</b>
Purpose	1
Audience	1
Scope	1
Exclusions	2
Terminology	2
<b>Methodology</b>	<b>3</b>
Demographic profile data	3
Statistics New Zealand census data	3
<b>DSS Clients compared with the New Zealand population</b>	<b>4</b>
Age and sex	4
Ethnicity	5
<b>Disability services</b>	<b>7</b>
Disability Support Services groups	7
<b>Overall Client demographics</b>	<b>9</b>
Age and sex	9
Ethnicity	11
Ethnicity–age profiles	12
Marital status	13
Accommodation	14
Location	15
Principal disabilities	16
Support package allocation	17
Needs Assessment Service Coordination organisations (NASCs)	18

<b>Client demographics, by service</b>	<b>19</b>
Home and community support	19
Carer support	26
Community residential services	34
Supported living	42
Respite services	50
Day programmes	58
<b>Client demographics, by disability</b>	<b>64</b>
Intellectual disability	65
Physical disability	67
Autism spectrum disorder	69
Sensory disability	72
Neurological disability	73
<b>Service usage, by ethnicity</b>	<b>74</b>
<b>Glossary</b>	<b>77</b>
<b>Appendix: Disability types</b>	<b>78</b>

### List of Tables

Table 1:	Ethnicity of DSS Clients compared with the New Zealand population aged 0–79 years	5
Table 2:	Client numbers per service type	7
Table 3:	DSS Clients, by age and sex, September 2014	9
Table 4:	DSS Clients, by age and ethnicity	11
Table 5:	DSS Clients, by marital status and sex	13
Table 6:	DSS Clients, by accommodation type and sex	14
Table 7:	DSS Clients, by ethnicity and regional council	15
Table 8:	DSS Clients, by sex and class of principal disability	16
Table 9:	DSS Clients, by SPA level and age	17
Table 10:	DSS Clients, by NASC	18
Table 11:	HCSS Clients, by age and sex	19
Table 12:	HCSS Clients, by age and ethnicity	20
Table 13:	HCSS Clients, by marital status and sex	21
Table 14:	HCSS Clients, by sex and accommodation type	22
Table 15:	HCSS Clients, by region and ethnicity	23
Table 16:	HCSS Clients, by principal disability type and sex	24
Table 17:	HCSS Clients, by SPA level and sex	25
Table 18:	Carer support Clients, by age and sex	26
Table 19:	Carer support Clients, by age and ethnicity	28

Table 20:	Carer support Clients, by sex and accommodation type	29
Table 21:	Carer support Clients, by marital status and sex	30
Table 22:	Carer support Clients, by region and ethnicity	31
Table 23:	Carer support Clients, by sex and principal disability	32
Table 24:	Carer support Clients, by SPA level and sex	33
Table 25:	Community residential services Clients, by age and sex	34
Table 26:	Community residential services Clients, by ethnicity and age	36
Table 27:	Community residential services Clients, by marital status and sex	37
Table 28:	Community residential services Clients, by accommodation type and sex	38
Table 29:	Community residential services Clients, by region and ethnicity	39
Table 30:	Community residential services Clients, by principal disability and sex	40
Table 31:	Community residential services Clients, by SPA level and sex	41
Table 32:	Clients using supported living services, by age and sex	42
Table 33:	Clients using supported living services, by ethnicity and age	44
Table 34:	Clients using supported living services, by marital status and sex	45
Table 35:	Clients using supported living services, by accommodation type and sex	46
Table 36:	Clients using supported living services, by ethnicity and region	47
Table 37:	Clients using supported living services, by principal disability and sex	48
Table 38:	Clients using supported living services, by SPA level and sex	49
Table 39:	Respite Clients, by age and sex	50
Table 40:	Respite Clients, by age and ethnicity	52
Table 41:	Respite Clients, by sex and marital status	53
Table 42:	Respite Clients, by sex and accommodation type	54
Table 43:	Respite Clients, by ethnicity and region	55
Table 44:	Respite Clients, by sex and disability type	56
Table 45:	Respite Clients, by SPA level and sex	57
Table 46:	Day-programme Clients, by age and sex	58
Table 47:	Day-programme Clients, by age and ethnicity	60
Table 48:	Day-programme Clients, by region	61
Table 49:	Day-programme Clients, by principal disability	62
Table 50:	Day-programme Clients, by SPA level	63
Table 51:	Clients with intellectual disability, by age and sex	65
Table 52:	Clients with physical disability, by age and sex	67
Table 53:	Clients with ASD, by age and sex	69
Table 54:	ASD Clients, by sex and service usage	70
Table 55:	Sensory disability Clients, by age and sex	72
Table 56:	Clients with neurological disability, by age and sex	73
Table A1:	Principal disability types, by number of DSS Clients	78

## List of Figures

Figure 1A:	Age and sex of DSS Clients, 2014	4
Figure 1B:	Age and sex of the New Zealand population 2013 census	4
Figure 2:	Ethnicity of DSS Clients compared with the New Zealand population aged 0–79 years	5
Figure 3:	DSS Client profile, by age and sex	10
Figure 4:	DSS Clients, by main ethnic group	12
Figure 5:	DSS Clients, by sex and class of principal disability	16
Figure 6:	DSS Clients, by SPA level and age	17
Figure 7:	DSS Clients, by NASC	18
Figure 8:	HCSS Clients, by age and sex	20
Figure 9:	HCSS Clients, by age and ethnicity	21
Figure 10:	HCSS Clients, by region and ethnicity	23
Figure 11:	HCSS Clients, by principal disability type and sex	24
Figure 12:	HCSS Clients, by SPA level and sex	25
Figure 13:	Age and sex of carer support Clients	27
Figure 14:	Carer support Clients, by age and ethnicity	28
Figure 15:	Carer support Clients, by region and ethnicity	31
Figure 16:	Carer support Clients, by sex and principal disability	32
Figure 17:	Carer support Clients, by SPA level and sex	33
Figure 18:	Age and sex of community residential services Clients	35
Figure 19:	Community residential services Clients, by ethnicity and age	36
Figure 20:	Community residential services Clients, by region and ethnicity	39
Figure 21:	Community residential services Clients, by principal disability and sex	40
Figure 22:	Community residential services Clients, by SPA level and sex	41
Figure 23:	Age and sex of Clients using supported living services	43
Figure 24:	Clients using supported living services, by ethnicity and age group	44
Figure 25:	Clients using supported living services, by ethnicity and region	47
Figure 26:	Clients using supported living services, by principal disability and sex	48
Figure 27:	Clients using supported living services, by SPA level and sex	49
Figure 28:	Age and sex of respite Clients	51
Figure 29:	Respite Clients, by age and ethnicity	52
Figure 30:	Respite Clients, by ethnicity and region	55
Figure 31:	Respite Clients, by sex and disability type	56
Figure 32:	Respite Clients, by SPA level and sex	57
Figure 33:	Day-programme Clients, by age and sex	59
Figure 34:	Day-programme Clients, by age and ethnicity	60
Figure 35:	Day-programme Clients, by region	61
Figure 36:	Day-programme Clients, by principal disability	62
Figure 37:	Day-programme Clients, by SPA level	63

Figure 38:	Age and sex of Clients with intellectual disability	66
Figure 39:	Clients with physical disability, by age and sex	68
Figure 40:	Age and sex of Clients with ASD	70
Figure 41:	ASD Clients, by sex and service usage	71
Figure 42:	Age and sex of Clients with sensory disabilities	72
Figure 43:	Age and sex of Clients with neurological disability	73
Figure 44:	Overall service usage, by ethnicity	74
Figure 45:	Service usage by Clients of European/Other ethnicity	74
Figure 46:	Service usage by Clients of Māori ethnicity	75
Figure 47:	Service usage by Clients of Pacific ethnicity	75
Figure 48:	Service usage by Clients of Asian ethnicity	76



---

# Executive summary

## Introduction

The purpose of this report is to provide demographic information about the disabled people allocated the majority of disability support services funded by the Ministry of Health's Disability Support Services (DSS): home and community support, carer support, community residential services, supported living, and respite and day programmes.

The report excludes information about disabled people allocated the following services: equipment and modifications; behaviour support; child development; regional intellectual supported accommodation services; and assessment, treatment and rehabilitation.

It is important to note that the report is based on information about services *allocated* to people by the Needs Assessment and Service Coordination (NASC) organisations. It is not based on services *used*.

## Overall Client demographics

- More males (56%) than females (44%) are allocated disability support services. Males dominate the age groups from 5 to 24 years; females dominate the 40+ years age groups.
- The median age of DSS Clients is 31 years.
- The ethnicity of Clients allocated disability support services is: 69% European/Other, 17% Māori, 6% Pacific and 5% Asian, with 4% of unknown ethnicity. European/Other and Pacific people are slightly under-represented when compared with the total New Zealand population; Māori are slightly over-represented, while Asian people are significantly under-represented.
- Among Asian Clients, males have a significant presence in the 5–24 years age group.
- Males make up 57% of Clients with intellectual disabilities. Females make up 58% of Clients with physical disabilities. Males (80%) dominate the Clients with autism spectrum disorder (ASD).
- Almost half of DSS Clients live in their own home or their family home.
- Half of DSS Clients reside in the three most populated regions, which include the major cities of Auckland, Christchurch and Hamilton.
- Almost half of all DSS Clients have an intellectual disability as their principal disability. Many of these Clients also have a physical disability.
- Almost a third have a physical disability as their principal disability.
- Only 5% of DSS Clients have a sensory (hearing or sight) or neurological disability.

# Disability support services

## Home and community support

- The median age of Clients is 46 years.
- People with physical disabilities make up 56% of the Clients allocated home and community support.
- Just over half (54%) of Clients are male.
- All ethnicities are well represented among Clients of home and community support.

## Carer support

- The median age of Clients is 15 years.
- People with intellectual disabilities make up 45% of the Clients whose carers receive carer support.
- Carer support is used predominantly for male Clients (65%) and for Clients under 20 years (65%).
- Clients of Māori, Pacific and Asian ethnicities are over-represented among those allocated carer support, while European/Other Clients are under-represented.

## Community residential services

- The median age of Clients is 47 years.
- There are more males (58%) than females allocated residential services.
- Clients of residential services are predominantly European/Other (77%) and Māori (15%). People of Pacific and Asian ethnicities are under-represented.
- People with intellectual disabilities account for 82% of the Clients allocated residential services.

## Supported living

- The median age of Clients is 41 years.
- People with intellectual disabilities make up 66% of the Clients using supported living.
- People using supported living services are predominantly European/Other (78%) and Māori (15%). People of Pacific and Asian ethnicities are under-represented.

## Respite

- Almost two-thirds (63%) of Clients allocated respite services are male, and over half (55%) are aged under 20 years.
- Māori represent 20% and Pacific people 7% of the Clients allocated respite.
- Almost half (49%) of respite Clients are on Very High support packages.

## **Day programmes**

- The median age of Clients is 45 years.
- DSS only funds day programmes for Clients who:
  - were once living in institutions such as Tokanui and Kimberley, and/or
  - are currently using High and Complex services allocated by the National Intellectual Disability Care Agency.
- There are more male day-programme Clients (55%) than female (45%).
- The majority of day-programme Clients are aged between 30 and 55 years.
- European/Other people (75%) are significantly over-represented among day-programme Clients.
- The majority (83%) of Clients using day-programme services have intellectual disabilities.
- A large majority (67%) of day-programme Clients have a Very High support package allocation level, and a further 26% have a High support package.

## **Disability types**

### **Intellectual disabilities**

- The median age is 28 years.
- Clients whose primary disability is an intellectual disability make up almost half of all DSS Clients. Many of them also have a physical disability.
- There are significantly more males (57%) with an intellectual disability allocated disability support services than females.
- There are two peaks in the age group profiles for both sexes: 10–19 years and 40–54 years.

### **Physical disabilities**

- The median age is 52 years.
- Clients whose primary disability is a physical disability make up a quarter of all DSS Clients.
- Females make up 58% of Clients with a physical disability.
- More than half of Clients with a physical disability are aged over 45 years.

### **Autism spectrum disorder**

- The median age is 12 years.
- Clients with ASD are predominantly male (81%).
- The majority (80%) of ASD Clients are aged under 20 years.

### **Sensory disabilities**

- The median age is 40 years.
- Males and females are evenly spread in this group.

## Neurological disabilities

- The median age is 53 years.
- Almost two-thirds of Clients are aged over 50 years.

## Trends

- The number of Clients receiving disability support services increased by 3.7% between September 2013 and September 2014.
- The number of Clients using Supported Living services increased by 17% from 2013.
- The number of Clients with intellectual, physical and ASD disabilities increased slightly, while those with sensory and neurological disabilities decreased slightly.
- There was little change in the ethnicity and location of DSS Clients from 2013.
- Support allocation packages increased by 2% in the Very High band and by 1% in the Medium band from 2013.

---

# Introduction

## Purpose

The purpose of this report is to inform decision-making on the planning and procurement of disability support services in both the New Zealand Ministry of Health (the Ministry) and the wider disability sector. This is the second annual demographic report, and it provides demographic information about the disabled people and their families / whānau who were allocated services funded by Disability Support Services (DSS) of the Ministry of Health in 2014. It also provides a comparison with the 2013 DSS demographic report to identify the extent of any changes.

## Audience

The principal intended audience of this report is the staff and managers of DSS who are involved in developing and implementing strategic and annual plans for the procurement of services.

## Scope

The report provides demographic information obtained from the Ministry's Socrates database collected by the Needs Assessment Service Coordination (NASC) organisation from the disabled people who have been allocated Ministry-funded disability support services. The information relates to people who were allocated the following disability support services in September 2014:

- home and community support
- carer support
- community residential services
- supported living
- respite
- day programmes.

The demographics presented relate to:

- age
- sex
- ethnicity
- marital status
- type of accommodation
- regional location within New Zealand
- type of disability
- support package allocation (SPA).

# Exclusions

This report excludes people allocated the following Ministry-funded services:

- equipment and modifications
- child development
- assessment, treatment and rehabilitation
- regional intellectual disability supported accommodation services
- behaviour support.

It is important to note that the report is based on information about services *allocated* to people by the NASC organisations. It is not based on services *used*.

# Terminology

Throughout this report we have used the capitalised noun 'Client' to refer to a person with a disability who is allocated a service funded by DSS.

---

# Methodology

This report analyses data about people who were allocated Ministry-funded disability support services in September 2014.

## Demographic profile data

The data presented in this report were derived from the Ministry's Socrates database in an extract provided by the Contract and Information Support (CIS) team within the National Services Purchasing Unit of the Ministry. The Socrates database includes all clients who have ever been assessed by NASC for eligibility to access Ministry-funded disability support services. There are 15 NASCs across New Zealand.

The extract contained one record for each client for each service allocated to that client. **This means that the demographic data for any client accessing multiple services appears more than once; that is, in each service-related table.**

## Statistics New Zealand census data

The majority of comparisons with the New Zealand population made in the report use the 2013 New Zealand census data.

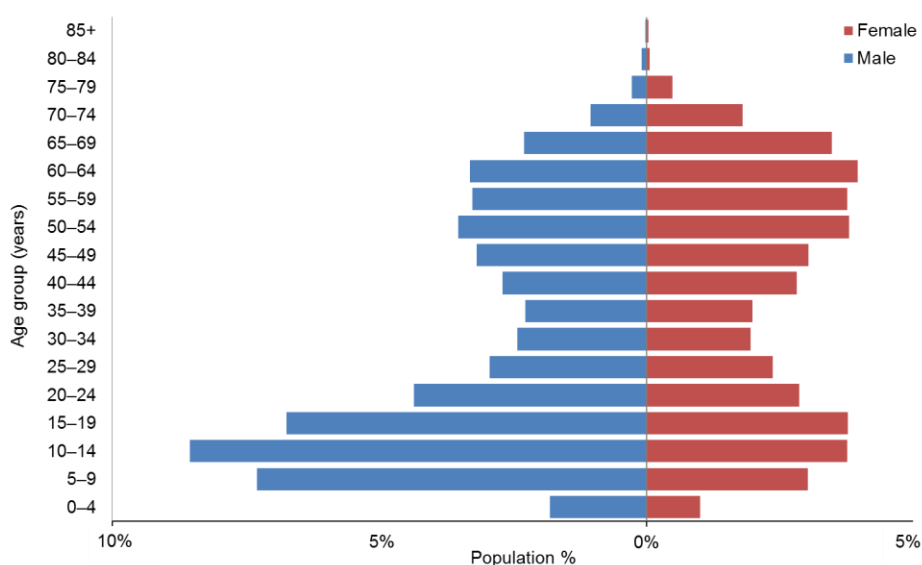
Note: many tables do not total 100% due to rounding.

# DSS Clients compared with the New Zealand population

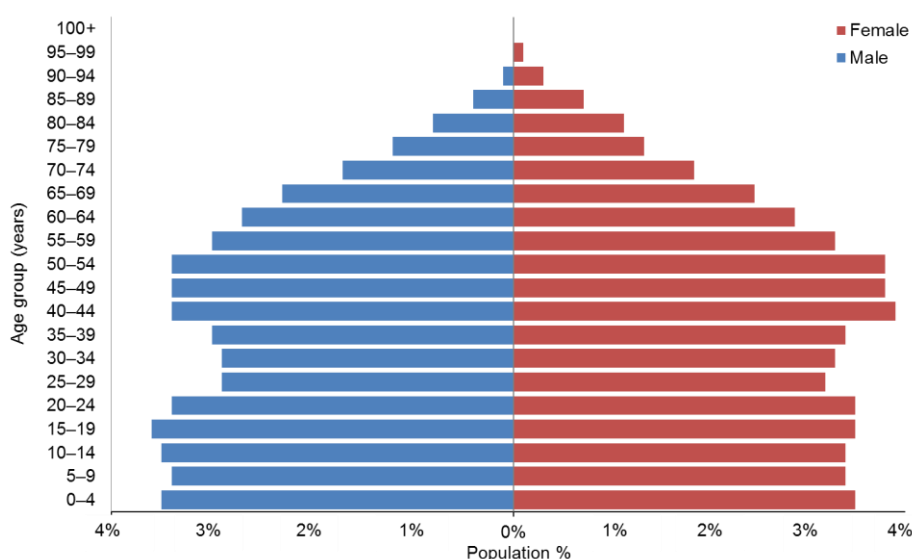
There are notable differences between the age and sex demographics of DSS Clients compared with the overall New Zealand population, using the 2013 census data.

## Age and sex

**Figure 1A: Age and sex of DSS Clients, 2014**



**Figure 1B: Age and sex of the New Zealand population 2013 census**



## Observations

- DSS Clients are markedly more concentrated in the 5–19 and 45–65 age groups, with males predominant in the younger age groups and females predominant in the older age groups.
- Generally, eligibility for DSS services is for people aged under 65, hence the lower numbers of people in the over-65 age groups compared with the general population. As at September 2014 there were 3087 (9.5%) DSS Clients aged 65+ years (compared with 14% aged 65+ years in the total New Zealand population).

## Ethnicity

A comparison between DSS Clients’ ethnicities in 2014 and the 2013 census ethnicity statistics for people aged 0–79 years is set out below.

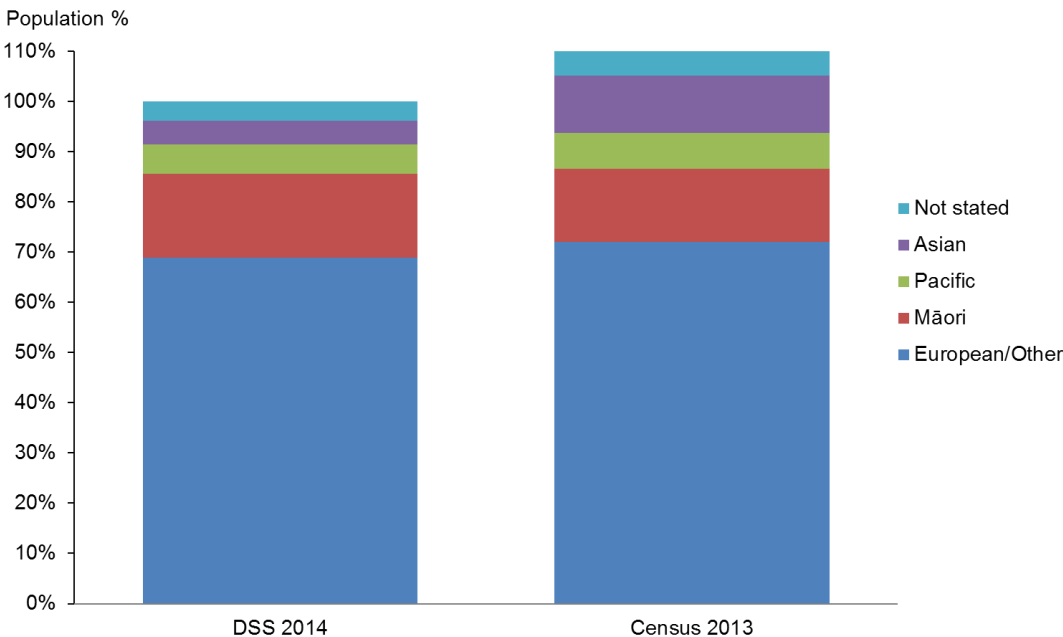
**Table 1: Ethnicity of DSS Clients compared with the New Zealand population aged 0–79 years**

Ethnicity	DSS 2014	Census 2013	DSS 2014	Census 2013
European/Other	22,242	2,945,220	69.0%	72.1%
Māori	5352	594,135	16.6%	14.5%
Pacific	1893	293,814	5.9%	7.2%
Asian	1532	467,769	4.8%	11.4%
Not stated	1228	212,253	3.8%	5.2%
<b>Total</b>	<b>32,247</b>	<b>4,087,707*</b>	<b>100.0%</b>	<b>110.4%**</b>

\* This total is less than the sum of the figures because some people identify as having more than one ethnicity.

\*\* Some people identify as having more than one ethnicity.

**Figure 2: Ethnicity of DSS Clients compared with the New Zealand population aged 0–79 years\*\***



## Observations

- European/Other and Pacific ethnicities are slightly under-represented in the DSS Client group.
- Asian ethnicity is significantly under-represented in DSS services.
- Māori are slightly over-represented in the DSS Client group.
- There is little change in the ethnicity profile since 2013.

Caveat: care is needed when making inferences from comparisons between DSS and New Zealand-wide numbers because DSS ethnicities are ‘prioritised’, and this will tend to exaggerate the proportion of Māori and Pacific people over Asian, European and Other people.

# Disability services

## Disability Support Services groups

The numbers of Clients using different services are set out in Table 2.

**Table 2: Client numbers per service type**

Service group description	Clients	Group total	Demographics analysed
Home support, including household management, personal care (including people using individualised funding for this)	16,813	16,813	Yes
Enhanced Individualised Funding	193	193	No
Enabling Good Lives	42	42	No
Carer support	16,785	16,785	Yes
Community residential	6660	7510	Yes
Residential: rest homes	282		
Residential: hospitals	568		
Supported independent living	3282	3282	Yes
Respite	2163	2163	Yes
Day programmes	1866	1866	Yes
Other		415	No
<b>Total non-unique Clients*</b>		<b>49,069**</b>	

\* Clients are counted more than once if they are allocated to more than one service type.

\*\* This number has increased by 10% from 44,784 in the 2013 DSS Demographic Report.

This report provides demographic information about Clients allocated to the following services:

- home support (also referred to as home and community support), which provides one, or a combination, of the following services:
  - personal care (ie, assistance with activities of daily living that enables a person with a disability to maintain their functional ability at an optimal level)
  - household management (ie, assistance to a person with a disability to maintain, organise and control their household / home environment, enabling them to continue living within their own environment)
  - sleepover care or night support (ie, a support worker sleeps at the home of the disabled person in order to provide intermittent care throughout the night)
- carer support, which provides reimbursement of some of the costs of using a support person to care for and support a disabled person and allows their carer to take some time out for themselves
- community residential services, which provide 24-hour support for people to have a safe and satisfying home life, with opportunities for learning and employment, and participation in family and social life as well as the community

- supported living, which provides a range of services to disabled people to live independently in their own home (eg, assistance with shopping and accessing community services)
- respite, which provides short-term relief support in a residential setting with the aim of providing a break for the disabled person's carer in order to sustain their longer-term support for the person to live in the community, while also providing the disabled person with a positive, stimulating and worthwhile experience
- day programmes, which provide a range of activities that help disabled people to take part in their community and improve their personal skills by providing access to regular meaningful social contact and stimulating activities.

---

# Overall Client demographics

This section shows the demographic details of all the Clients allocated services from DSS service providers. The total number of Clients as at September 2014 was 32,247.

## Age and sex

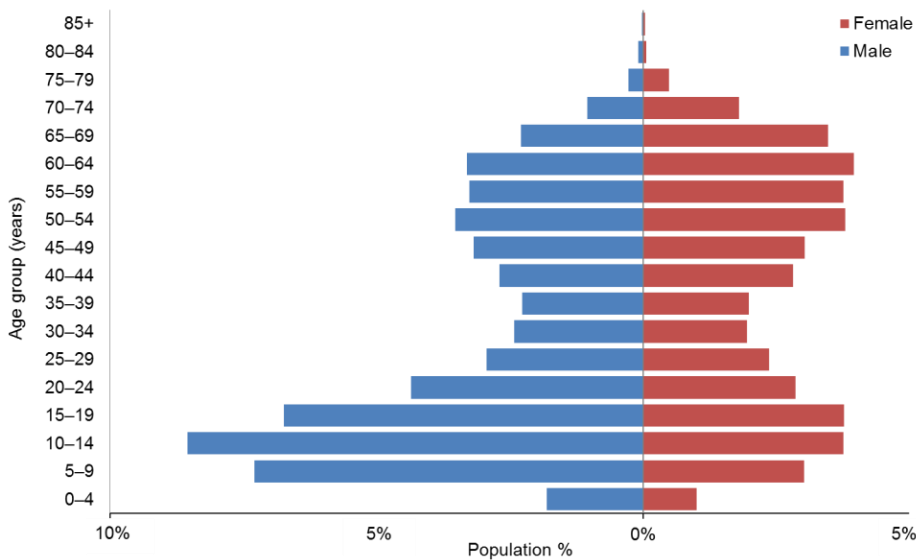
**Table 3: DSS Clients, by age and sex, September 2014**

Age groups	Female	Male	Total
0-4	324	582	906
5-9	975	2351	3326
10-14	1214	2758	3972
15-19	1216	2173	3389
20-24	922	1403	2325
25-29	765	947	1712
30-34	630	779	1409
35-39	641	730	1371
40-44	909	869	1778
45-49	981	1025	2006
50-54	1225	1135	2360
55-59	1215	1049	2264
60-64	1278	1064	2342
65-69	1120	738	1858
70-74	581	337	918
75-79	158	86	244
80-84	19	27	46
85+	14	7	21
<b>Total</b>	<b>14,187</b>	<b>18,060</b>	<b>32,247</b>
	<b>44%</b>	<b>56%</b>	<b>100%</b>

## Observations

- The total number of individuals allocated disability support services increased by 3% (from 31,101) from 2013.
- The median age was 31 years.

**Figure 3: DSS Client profile, by age and sex**



### Observations

- There are significantly more males (56%) than females (44%) using DSS services. The proportions have not changed since 2013.
- There are two high points in the age profiles of DSS Clients: one in teenage years and the second in the 50–69 years age groups.
- Males dominate the age groups from 0–25 years, and females are significantly more numerous than males in the 50–70 years age groups.

# Ethnicity

**Table 4: DSS Clients, by age and ethnicity**

Age group	European / Other	Māori	Pacific	Asian	Not stated / don't know	Total
0–4	459	190	62	69	126	906
5–9	1888	656	253	262	267	3326
10–14	2527	750	255	280	160	3972
15–19	2204	647	228	240	70	3389
20–24	1543	412	191	159	20	2325
25–29	1160	295	114	95	48	1712
30–34	979	241	91	70	28	1409
35–39	997	221	88	38	27	1371
40–44	1315	283	89	29	62	1778
45–49	1455	335	99	53	64	2006
50–54	1767	372	96	50	75	2360
55–59	1684	344	90	62	84	2264
60–64	1798	315	100	52	77	2342
65–69	1471	191	85	40	71	1858
70–74	728	76	44	29	41	918
75–79	208	18	8	4	6	244
80–84	40	6				46
85+	19				2	21
<b>Total</b>	<b>22,242</b>	<b>5352</b>	<b>1893</b>	<b>1532</b>	<b>1228</b>	<b>32,247</b>
	<b>69.0%</b>	<b>16.6%</b>	<b>5.9%</b>	<b>4.8%</b>	<b>3.8%</b>	<b>100%</b>

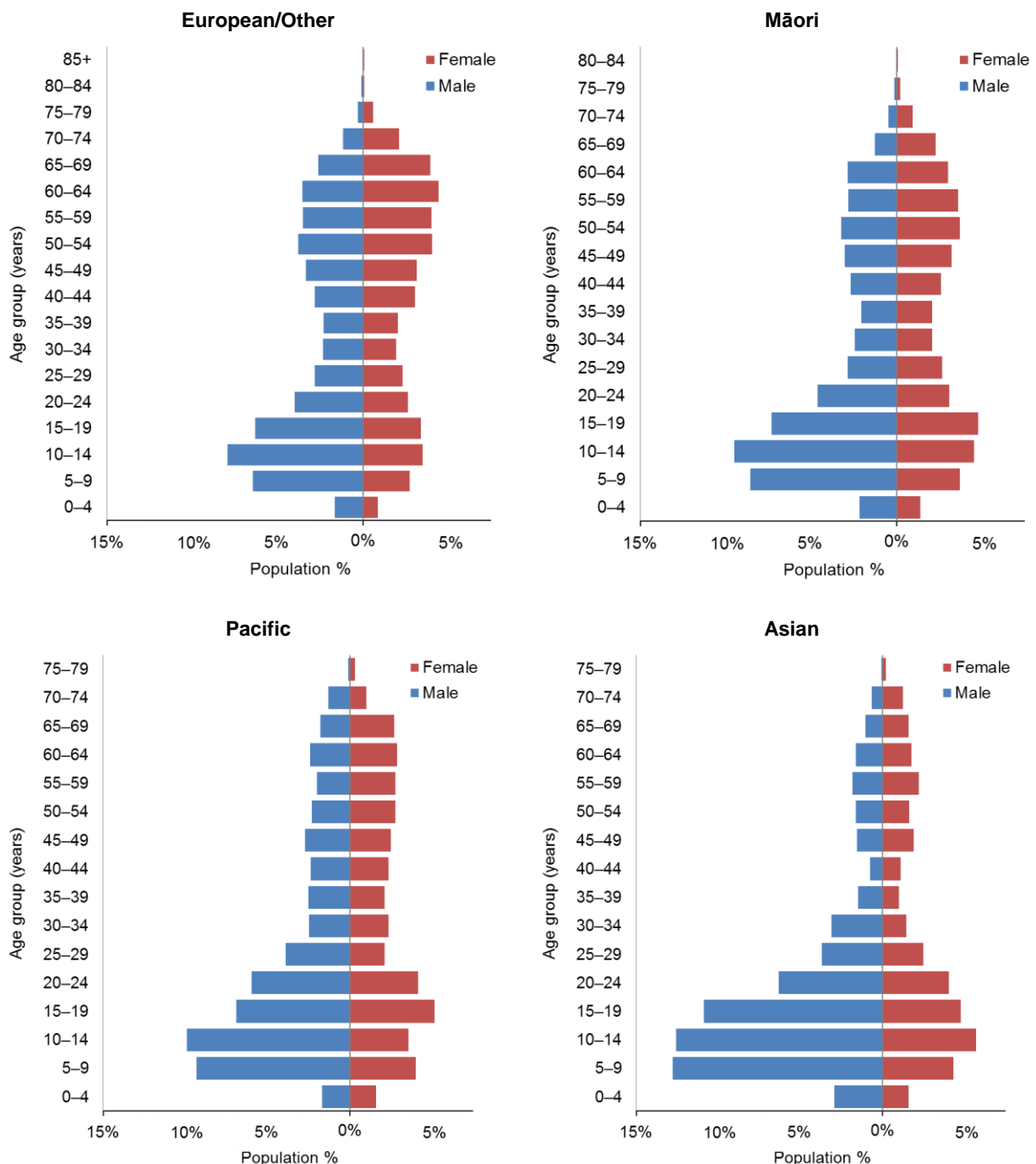
## Observation

- There has been no significant change in the ethnicity profile of DSS Clients since 2013.

# Ethnicity–age profiles

There are distinct differences in the age profiles of the four main ethnic groups.

**Figure 4: DSS Clients, by main ethnic group**



## Observations

- Young people of both sexes are over-represented in the Māori, Pacific and especially the Asian Clients, particularly young males.
- Asians are particularly under-represented in the older age groups.
- The Pacific population does not have the bulge in middle-aged people evident in the other ethnic groups.

# Marital status

**Table 5: DSS Clients, by marital status and sex**

<b>Marital status</b>	<b>Male</b>	<b>Female</b>	<b>Total</b>
Non-partnered, not further defined	3369	2473	5842
Non-partnered, never married	1572	969	2541
Married (not separated), not further defined	460	834	1294
Not stated	337	280	617
Non-partnered, divorced	102	211	313
Partnered, not further defined	118	147	265
Non-partnered, separated	109	141	250
Non-partnered, widowed	39	197	236
First marriage (not separated)	20	32	52
Don't know	13	20	33
Response outside scope	14	9	23
Remarried (not separated)	5	10	15
Opposite-sex partnership	4	7	11
Same-sex partnership	1	5	6
Blank	11,897	8852	20,749
<b>Total</b>	<b>18,060</b>	<b>14,187</b>	<b>32,247</b>

## Observations

- Marital status is not recorded for 64% of DSS Clients.
- Of DSS Clients where data is recorded, 80% do not have partners.

# Accommodation

**Table 6: DSS Clients, by accommodation type and sex**

Accommodation	Male	Female	Total
Own / family home	8601	6566	15,167
Community residential home	3295	2433	5728
Rental accommodation	2446	1912	4358
Unknown	1419	1160	2579
Other	896	759	1655
Housing New Zealand accommodation	813	802	1615
Rest home / continuing care hospital	284	306	590
Boarder	176	125	301
Council accommodation	97	81	178
Unit in a retirement village	16	27	43
Prison	8	4	12
Unit in a retirement village – licence to occupy	5	6	11
No fixed abode	4	5	9
Blank		1	1
<b>Total</b>	<b>18,060</b>	<b>14,187</b>	<b>32,247</b>

## Observations

- Almost half of DSS Clients live in their own or their family home, and over half (57%) of these are male.
- The accommodation profiles for male and female DSS Clients are generally similar.

# Location

**Table 7: DSS Clients, by ethnicity and regional council**

Regional council	European / Other	Māori	Pacific	Asian	Not stated	Total	%
Auckland	5204	1294	1405	1029	625	9556	30
Canterbury	3560	362	62	113	246	4343	13
Waikato	2080	747	64	80	116	3087	10
Wellington	2161	375	202	141	92	2971	9
Bay of Plenty	1482	657	28	41	13	2221	7
Manawatu–Wanganui	1561	381	32	29	33	2036	6
Otago	1639	124	23	25	29	1840	6
Northland	725	549	17	21	4	1316	4
Hawke's Bay	798	249	30	22	27	1126	3
Taranaki	812	181	6	11	9	1019	3
Southland	749	79	8	2	7	845	3
Nelson	529	61	3	10		603	2
Gisborne	147	195	8	2	6	358	1
Marlborough	301	54	1	2		358	1
Tasman	307	28	3	4		342	1
West Coast	187	16	1		21	225	1
<b>Total</b>	<b>22,242</b>	<b>5352</b>	<b>1893</b>	<b>1532</b>	<b>1228</b>	<b>32,247</b>	

## Observations

- Half of DSS Clients reside in the three most populated regions, which include the major cities of Auckland, Christchurch and Hamilton.
- 74% of Pacific Clients reside in the Auckland region.
- 67% of Asian Clients reside in the Auckland region.

# Principal disabilities

Each DSS Client is recorded in Socrates with a principal disability (see Appendix). Some Clients have multiple disability types, and occasionally a Client will have two principal disabilities. Only the first principal disability is counted in the data presented in this report.

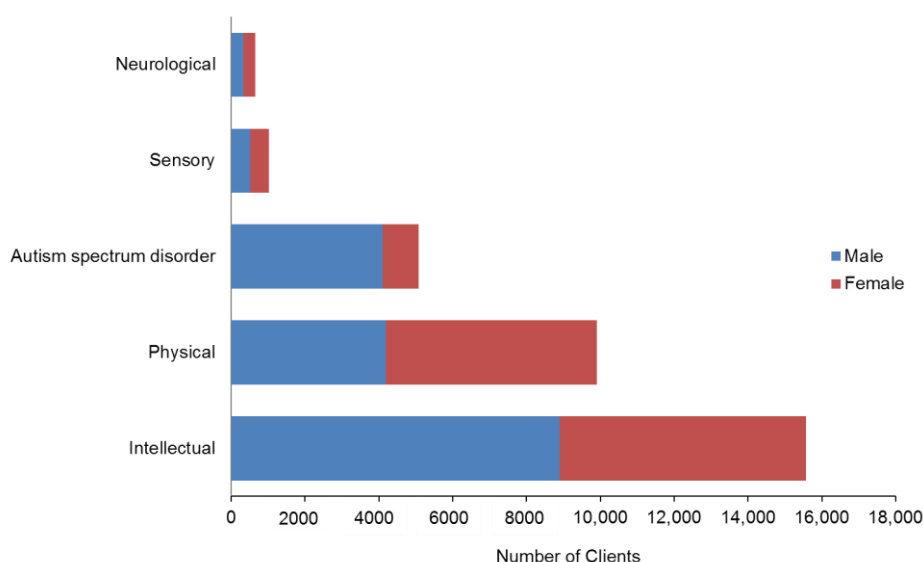
There are six disability classes: intellectual, physical, autism spectrum disorder (ASD), sensory, neurological and ‘Not DSS’ (eg, mental health, cancer, medical).

**Table 8: DSS Clients, by sex and class of principal disability\***

Principal disability type	Male	Female	Total	%
Intellectual	8897	6681	15,578	48
Physical	4200	5701	9901	31
Autism spectrum disorder	4111	966	5077	16
Sensory	520	510	1030	3
Neurological	332	329	661	2
<b>Total</b>	<b>18,060</b>	<b>14,187</b>	<b>32,247</b>	<b>100</b>

\* Where a Client was recorded as having two principal disabilities, only the first one was used in this analysis.

**Figure 5: DSS Clients, by sex and class of principal disability**



## Observations

- Almost half of all DSS Clients have an intellectual disability as their primary disability. Many of these Clients also have a physical disability.
- Almost a third have a physical disability.
- Males are predominant in the groups of Clients with ASD (81%) and intellectual disabilities (57%).
- Females (58%) are predominant in the group of Clients with physical disabilities.

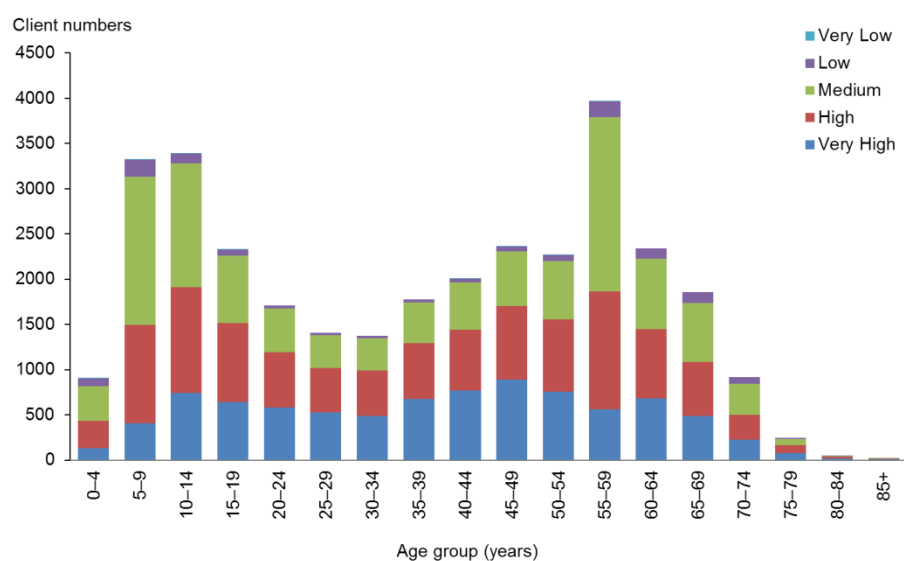
# Support package allocation

Each DSS Client has a support package allocation (SPA) determined by their NASC on the basis of a detailed needs assessment.

**Table 9: DSS Clients, by SPA level and age**

Age group	Very High	High	Medium	Low	Very Low	Total
0-4	128	307	380	87	4	906
5-9	408	1085	1637	192	4	3326
15-19	742	1170	1370	104	3	3389
20-24	639	875	742	68	1	2325
25-29	580	612	483	37		1712
30-34	530	488	364	27	0	1409
35-39	489	499	356	27		1371
40-44	677	616	451	34	0	1778
45-49	771	670	522	42	1	2006
50-54	893	808	608	49	2	2360
55-59	756	796	646	65	1	2264
10-14	561	1305	1926	174	6	3972
60-64	682	765	780	115	0	2342
65-69	486	598	652	122		1858
70-74	227	273	343	75		918
75-79	78	84	73	9		244
80-84	15	20	10	1		46
85+	12	8	1			21
<b>Total</b>	<b>8674</b>	<b>10,979</b>	<b>11,344</b>	<b>1228</b>	<b>22</b>	<b>32,247</b>
	<b>27%</b>	<b>34%</b>	<b>35%</b>	<b>4%</b>	<b>0%</b>	<b>100%</b>

**Figure 6: DSS Clients, by SPA level and age**



## Observation

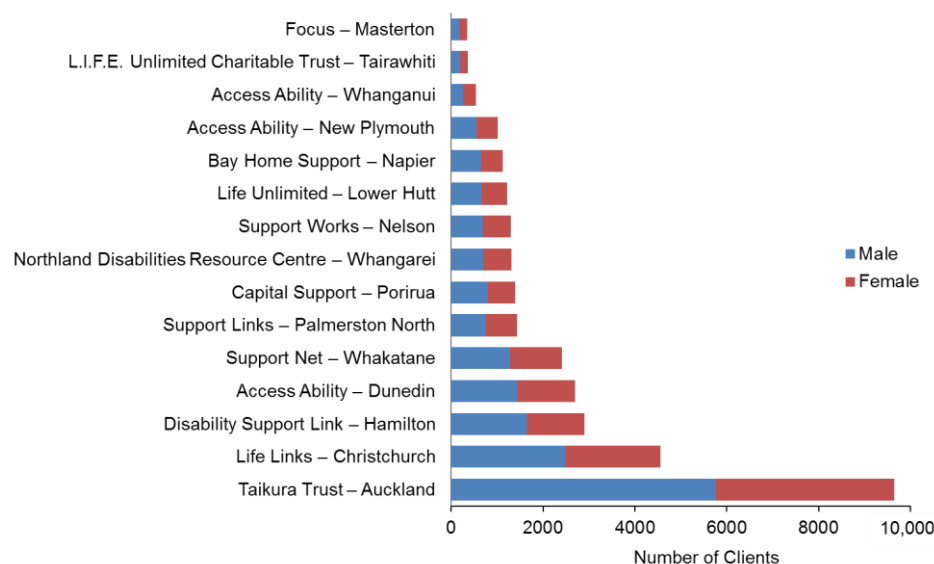
- Medium SPA levels are more common in the 5-19 years age groups. This is the same as in the 2013 report.

# Needs Assessment Service Coordination organisations (NASCs)

**Table 10: DSS Clients, by NASC**

NASC	Male	Female	Total	%
Taikura Trust – Auckland	5764	3887	9651	30
Life Links – Christchurch	2489	2074	4563	14
Disability Support Link – Hamilton	1650	1253	2903	9
Access Ability – Dunedin	1432	1261	2693	8
Support Net – Whakatane	1286	1122	2408	7
Support Links – Palmerston North	752	687	1439	4
Capital Support – Porirua	793	596	1389	4
Northland Disabilities Resource Centre – Whangarei	705	611	1316	4
Support Works – Nelson	684	613	1297	4
Life Unlimited – Lower Hutt	665	545	1210	4
Bay Home Support – Napier	647	475	1122	3
Access Ability – New Plymouth	545	474	1019	3
Access Ability – Whanganui	270	262	532	2
L.I.F.E. Unlimited Charitable Trust – Tairāwhiti	195	163	358	1
Focus – Masterton	183	164	347	1
<b>Total</b>	<b>18,060</b>	<b>14,187</b>	<b>32,247</b>	

**Figure 7: DSS Clients, by NASC**



## Observation

- Taikura Trust in Auckland has more than twice as many Clients as the second-largest NASC and works with 30% of DSS Clients.

---

# Client demographics, by service

## Home and community support

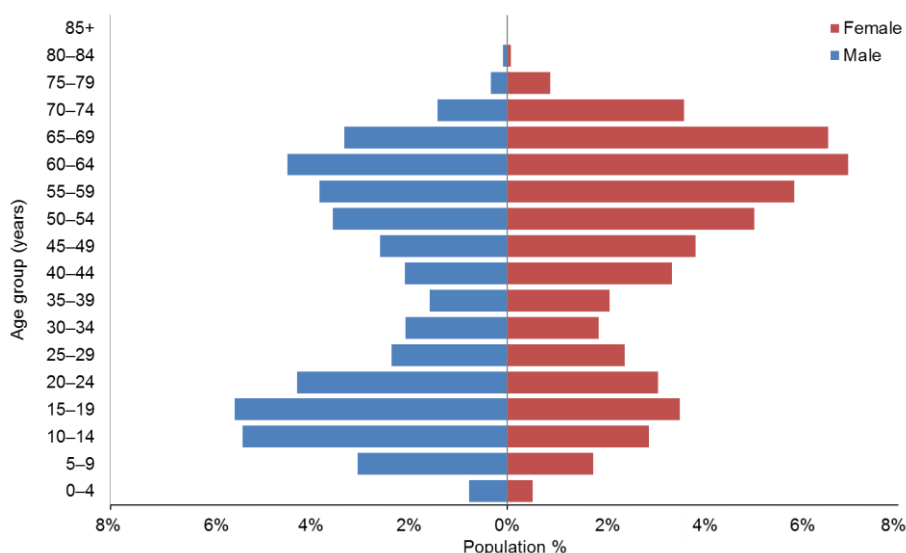
This section provides demographic profiles for the 16,813 DSS Clients who are receiving home and community support services (HCSS). These services include personal care and/or household management carried out in the Client's home.

### Age and sex

**Table 11: HCSS Clients, by age and sex**

Age group	Male	Female	Total
0-4	129	86	215
5-9	506	292	798
10-14	898	481	1379
15-19	923	585	1508
20-24	713	513	1226
25-29	392	400	792
30-34	345	311	656
35-39	263	348	611
40-44	346	559	905
45-49	430	639	1069
50-54	591	838	1429
55-59	637	975	1612
60-64	746	1156	1902
65-69	553	1090	1643
70-74	236	601	837
75-79	56	147	203
80-84	13	12	25
85+		3	3
<b>Total</b>	<b>7776</b>	<b>9036</b>	<b>16,813</b>
	<b>54%</b>	<b>46%</b>	

**Figure 8: HCSS Clients, by age and sex**



**Observations**

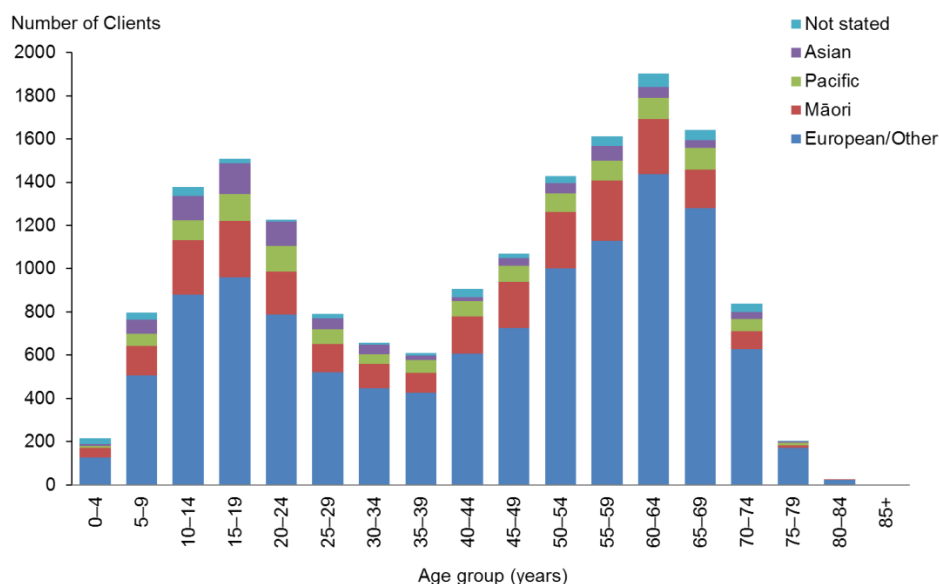
- The median age is 46 years.
- There are more female than male HCSS Clients.
- There are two peaks in the age distribution of HCSS Clients: male teenagers and females in the 55–69 years age range.

**Ethnicity**

**Table 12: HCSS Clients, by age and ethnicity**

Age group	European / Other	Māori	Pacific	Asian	Not stated	Total
0-4	128	42	10	9	26	215
5-9	505	138	55	66	34	798
10-14	880	251	92	113	43	1379
15-19	960	261	125	141	21	1508
20-24	787	199	118	115	7	1226
25-29	520	130	70	50	22	792
30-34	448	112	45	43	8	656
35-39	427	91	58	23	12	611
40-44	608	172	70	19	36	905
45-49	727	213	72	37	20	1069
50-54	1000	263	85	49	32	1429
55-59	1129	278	93	67	45	1612
60-64	1437	254	98	51	62	1902
65-69	1279	180	100	34	50	1643
70-74	629	81	56	33	38	837
75-79	170	13	11	6	3	203
80-84	23	2				25
85+	3					3
<b>Total</b>	<b>11,660</b>	<b>2680</b>	<b>1158</b>	<b>856</b>	<b>459</b>	<b>16,813</b>
	<b>69%</b>	<b>16%</b>	<b>7%</b>	<b>5%</b>	<b>3%</b>	

**Figure 9: HCSS Clients, by age and ethnicity**



**Observation**

- Pacific Clients are slightly over-represented in the HCSS Client group.

**Marital status**

**Table 13: HCSS Clients, by marital status and sex**

Marital status	Male	Female	Total
Non-partnered, not further defined	1616	1542	3158
Married (not separated), not further defined	448	867	1315
Non-partnered, never married	697	519	1216
Not stated	193	250	443
Non-partnered, divorced	110	236	346
Non-partnered, widowed	46	247	293
Non-partnered, separated	124	164	288
Partnered, not further defined	94	135	229
First marriage (not separated)	17	33	50
Don't know	14	20	34
Remarried (not separated)	3	11	14
Response outside scope	6	7	13
Opposite-sex partnership	1	5	6
Same-sex partnership		4	4
Blank	4408	4996	9404
<b>Total</b>	<b>7777</b>	<b>9036</b>	<b>16,813</b>

**Observations**

- Marital status was not recorded for most Clients (56%).
- Of the Clients with marital status recorded, 72% were not in any form of partnership or marriage.

## Accommodation

**Table 14: HCSS Clients, by sex and accommodation type**

Accommodation type	Male	Female	Total
Own / family home	4170	4886	9056
Rental accommodation	1271	1408	2679
Unknown	701	924	1625
Housing New Zealand accommodation	660	834	1494
Other	386	485	871
Community residential home	371	267	638
Council accommodation	88	94	182
Boarder	60	60	120
Rest home / continuing care hospital	42	42	84
Unit in a retirement village	20	28	48
Unit in a retirement village – licence to occupy	5	8	13
Prison	2		2
No fixed abode	1		1
<b>Total</b>	<b>7777</b>	<b>9036</b>	<b>16,813</b>

### Observation

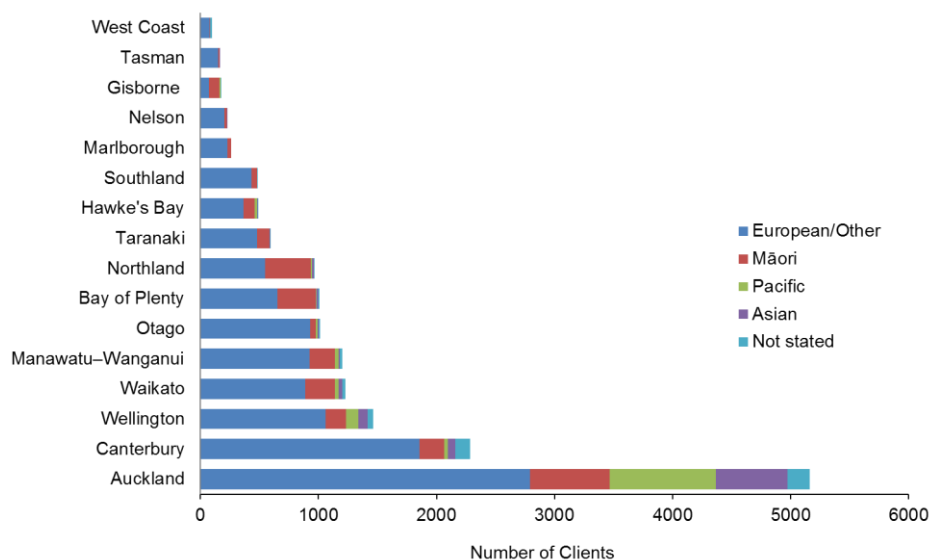
- Of the HCSS Clients whose accommodation type was recorded, the majority (54%) lived in their own home or their family home (a drop from 65% in 2013).

## Location

**Table 15: HCSS Clients, by region and ethnicity**

Region	European / Other	Māori	Pacific	Asian	Not stated	Total	%
Auckland	2792	674	899	609	188	5162	31
Canterbury	1857	209	30	64	122	2282	14
Wellington	1060	173	106	77	46	1462	9
Waikato	887	254	29	31	27	1228	7
Manawatu–Wanganui	923	216	30	11	23	1203	7
Otago	931	47	15	8	10	1011	6
Bay of Plenty	652	323	9	16	7	1007	6
Northland	546	388	10	17	2	963	6
Taranaki	481	103	3	5	3	595	4
Hawke's Bay	367	94	18	6	2	487	3
Southland	432	46		1	6	485	3
Marlborough	228	30				258	2
Nelson	201	21	1	7		230	1
Gisborne	74	89	6	1	9	179	1
Tasman	151	10	1	3		165	1
West Coast	78	3	1		14	96	1
<b>Total</b>	<b>11,660</b>	<b>2680</b>	<b>1158</b>	<b>856</b>	<b>459</b>	<b>16,813</b>	<b>100</b>

**Figure 10: HCSS Clients, by region and ethnicity**



## Observations

- Almost one-third (31%) of HCSS Clients live in the Auckland region.
- The Auckland region has the largest ethnic diversity of HCSS Clients: 54% European/Other, 17% Pacific, 13% Māori and 12% Asian.

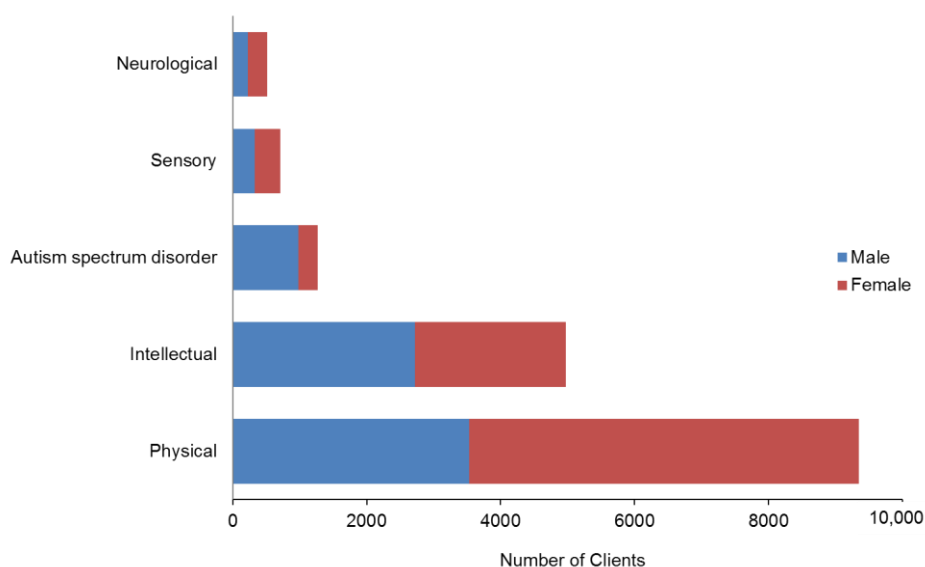
## Principal disability

**Table 16: HCSS Clients, by principal disability type and sex\***

Principal disability	Male	Female	Total	%
Physical	3527	5822	9349	56
Intellectual	2719	2257	4976	30
Autism spectrum disorder	983	281	1264	8
Sensory	323	384	707	4
Neurological	225	292	517	3
<b>Total</b>	<b>7777</b>	<b>9036</b>	<b>16,813</b>	<b>100</b>

\* Where Clients recorded two principal disabilities, only the first one has been used in this report.

**Figure 11: HCSS Clients, by principal disability type and sex**



### Observations

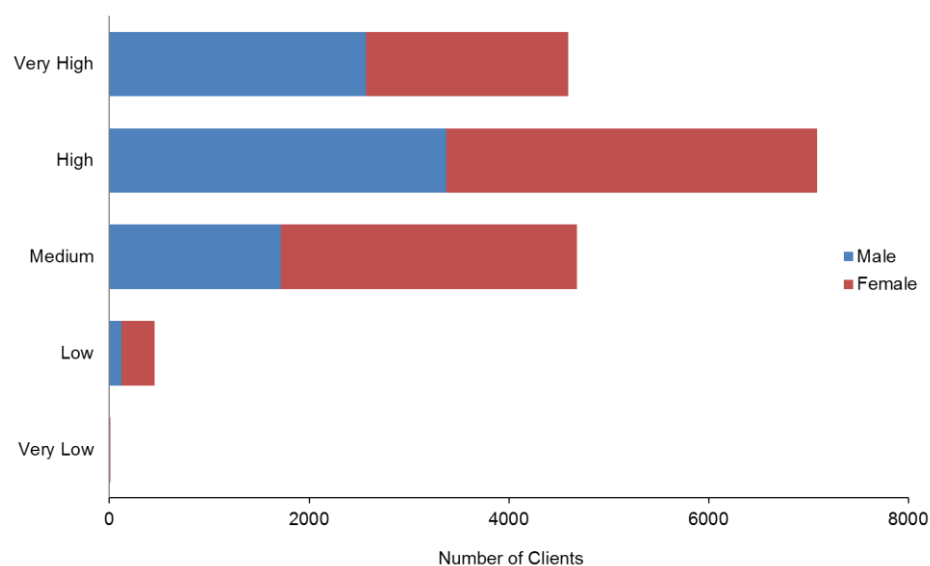
- Over half of Clients using HCSS have a physical disability as their primary disability.
- The single largest Client group using HCSS is women with physical disabilities (35%).

## Support package allocation

**Table 17: HCSS Clients, by SPA level and sex**

SPA level	Male	Female	Total	%
Very Low	1	1	2	0
Low	120	331	451	3
Medium	1714	2970	4684	28
High	3373	3712	7085	42
Very High	2569	2022	4591	27
<b>Total</b>	<b>7656</b>	<b>8704</b>	<b>16,360</b>	<b>97</b>

**Figure 12: HCSS Clients, by SPA level and sex**



### Observations

- One-quarter of HCSS Clients have Very High SPAs.
- Two-thirds of HCSS Clients have High (42%) or Medium (28%) SPAs.

# Carer support

This section provides demographic profiles for the 16,785 DSS Clients whose carers were allocated the carer support subsidy of \$76 per day in order to access a break from caring.<sup>1</sup> The NASC allocates a number of days per year to each carer on the basis of need. Some of these Clients also appear in demographics for other services.

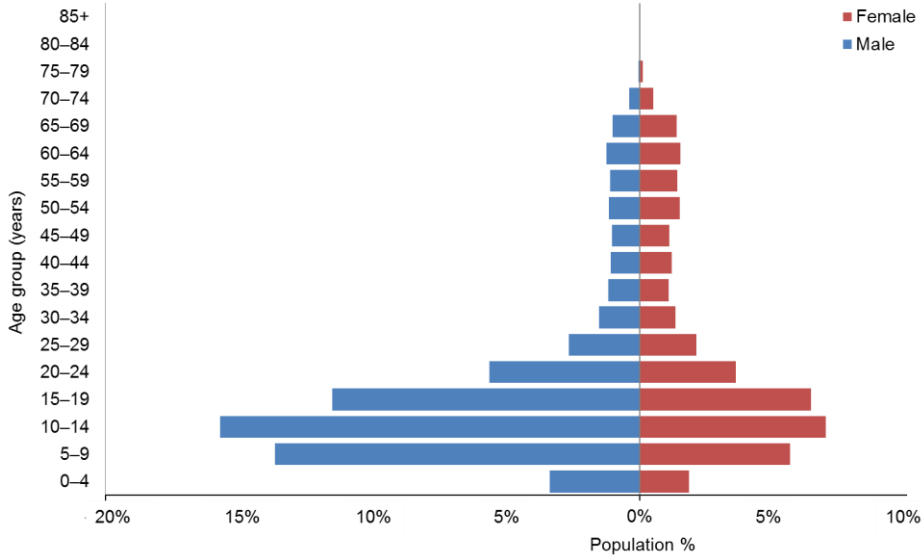
## Age and sex

**Table 18: Carer support Clients, by age and sex**

Age group	Male	Female	Total
0-4	565	307	872
5-9	2293	942	3235
10-14	2636	1166	3802
15-19	1933	1073	3006
20-24	944	600	1544
25-29	446	356	802
30-34	258	223	481
35-39	198	181	379
40-44	184	201	385
45-49	175	185	360
50-54	195	251	446
55-59	189	236	425
60-64	209	253	462
65-69	173	230	403
70-74	67	83	150
75-79	11	18	29
80-84	3	1	4
85+	0		0
<b>Total</b>	<b>10,479</b>	<b>6306</b>	<b>16,785</b>
	<b>62%</b>	<b>38%</b>	

<sup>1</sup> Not everyone who is allocated carer support takes advantage of the subsidy.

**Figure 13: Age and sex of carer support Clients**



**Observations**

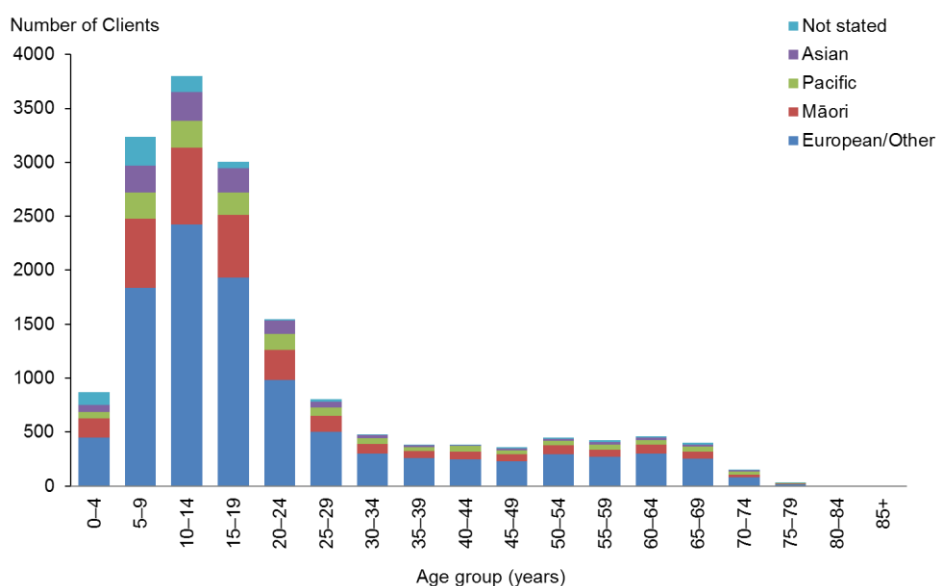
- The median age of carer support Clients is 15 years.
- Almost two-thirds (65%) of Clients whose carers are receiving carer support are aged under 20.

# Ethnicity

**Table 19: Carer support Clients, by age and ethnicity**

Age group	European/Other	Māori	Pacific	Asian	Not stated	Total
0-4	447	182	57	65	121	872
5-9	1838	637	247	249	264	3235
10-14	2423	712	247	269	151	3802
15-19	1930	582	211	221	62	3006
20-24	981	279	150	124	10	1544
25-29	503	148	77	54	20	802
30-34	299	90	52	33	7	481
35-39	260	62	38	16	3	379
40-44	247	73	49	8	8	385
45-49	227	67	34	21	11	360
50-54	296	84	39	19	8	446
55-59	268	70	47	23	17	425
60-64	300	81	45	23	13	462
65-69	255	61	52	15	20	403
70-74	81	25	30	10	4	150
75-79	17	3	5	2	2	29
80-84	4					4
85+	0					0
<b>Total</b>	<b>10,376</b>	<b>3156</b>	<b>1380</b>	<b>1152</b>	<b>721</b>	<b>16,785</b>
	<b>62%</b>	<b>19%</b>	<b>8%</b>	<b>7%</b>	<b>4%</b>	

**Figure 14: Carer support Clients, by age and ethnicity**



## Observations

- Māori, Pacific and Asian Clients are over-represented among the DSS Clients using carer support.
- European/Other people are under-represented in carer support, compared with 69% in the DSS Client population.

## Accommodation

**Table 20: Carer support Clients, by sex and accommodation type**

<b>Accommodation</b>	<b>Male</b>	<b>Female</b>	<b>Total</b>
Own / family home	6926	4179	11,105
Rental accommodation	1517	840	2357
Unknown	958	574	1532
Housing New Zealand accommodation	516	370	886
Other	405	249	654
Community residential home	77	41	118
Boarder	44	36	80
Rest home / continuing care hospital	13	7	20
Council accommodation	6	3	9
Prison	5	3	8
Unit in a retirement village	6	2	8
No fixed abode	4	1	5
Unit in a retirement village – licence to occupy	2	1	3
<b>Total</b>	<b>10,479</b>	<b>6306</b>	<b>16,785</b>

## Observation

- Two-thirds (66%) of carer support Clients are living in their own homes, which reflects the youthful nature of this Client group.

## Marital status

**Table 21: Carer support Clients, by marital status and sex**

Marital status	Male	Female	Total
Non-partnered, not further defined	1747	1061	2808
Non-partnered, never married	936	508	1444
Married (not separated), not further defined	285	396	681
Not stated	157	98	255
Partnered, not further defined	43	47	90
Non-partnered, separated	14	20	34
Non-partnered, divorced	13	16	29
Non-partnered, widowed	8	18	26
First marriage (not separated)	10	9	19
Response outside scope	12	5	17
Don't know	5	7	12
Remarried (not separated)	5	3	8
Same-sex partnership		2	2
Opposite-sex partnership		1	1
Blank	7244	4115	11,359
<b>Total</b>	<b>10,479</b>	<b>6306</b>	<b>16,785</b>

### Observations

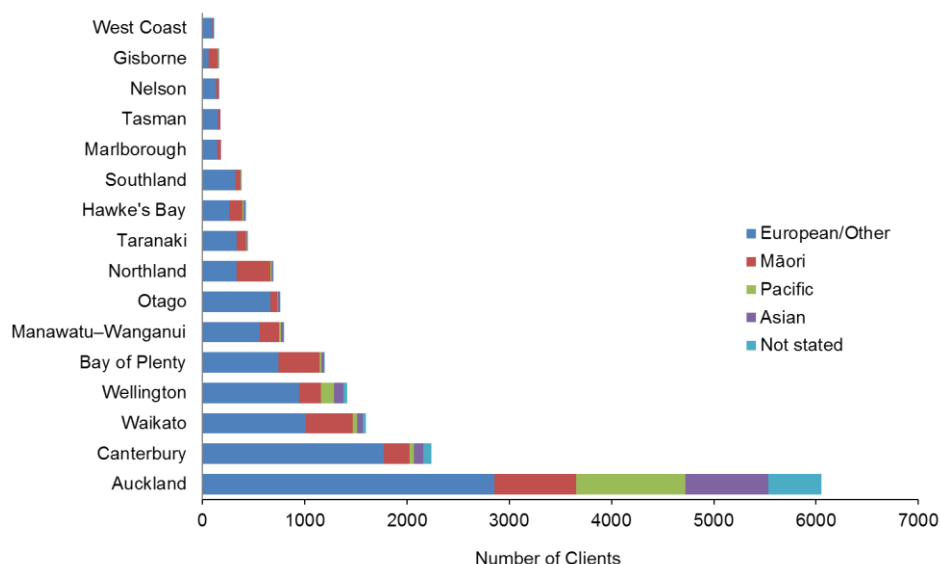
- Marital status was not recorded for 68% of carer support Clients. Given the young age of the majority of Clients, it can be assumed that most would be single.
- Of the remaining Clients, carer support is used mostly by Clients who do not have partners.

## Location

**Table 22: Carer support Clients, by region and ethnicity**

Region	European / Other	Māori	Pacific	Asian	Not stated	Total	%
Auckland	2852	799	1072	812	519	6054	36
Canterbury	1774	250	43	91	79	2237	13
Waikato	1009	459	45	54	31	1598	10
Wellington	947	208	131	92	37	1415	8
Bay of Plenty	741	402	20	26	4	1193	7
Manawatu–Wanganui	558	193	17	24	9	801	5
Otago	661	68	11	13	11	764	5
Northland	337	326	10	15	4	692	4
Taranaki	334	94	3	6	5	442	3
Hawke's Bay	261	126	16	13	8	424	3
Southland	323	49	4	1	4	381	2
Marlborough	146	28		1		175	1
Tasman	149	21	1	1		172	1
Nelson	131	28	1	2		162	1
Gisborne	57	92	6	1	2	158	1
West Coast	97	12			8	117	1
<b>Total</b>	<b>10,377</b>	<b>3155</b>	<b>1380</b>	<b>1152</b>	<b>721</b>	<b>16,785</b>	<b>100</b>

**Figure 15: Carer support Clients, by region and ethnicity**



## Observations

- Over one-third (36%) of carer support Clients live in the Auckland region.
- Auckland is the only region where less than half (47%) of carer support Clients are European/Other.

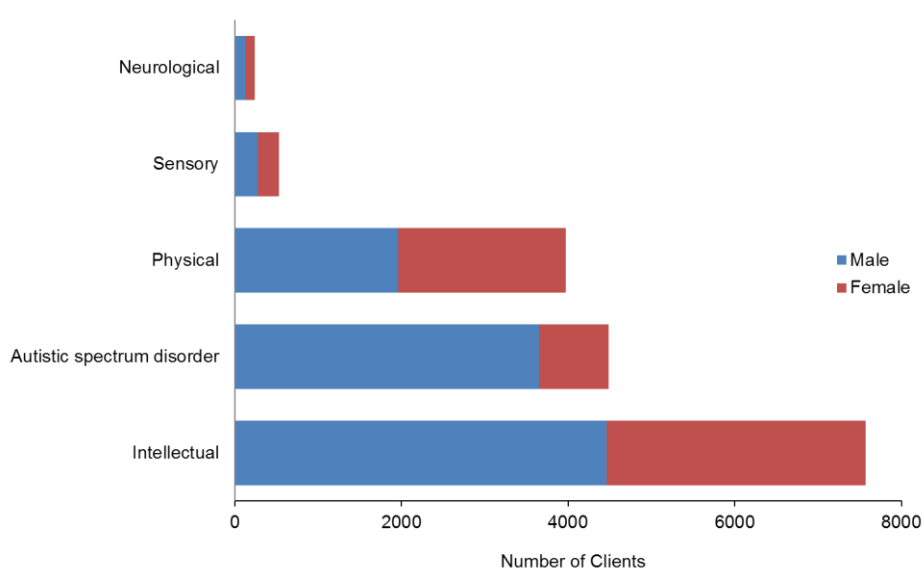
## Principal disability

**Table 23: Carer support Clients, by sex and principal disability\***

Principal disability	Male	Female	Total	%
Intellectual	4460	3107	7567	45%
Autistic spectrum disorder	3650	832	4482	27%
Physical	1963	2007	3970	24%
Sensory	277	250	527	3%
Neurological	129	110	239	1%
<b>Total</b>	<b>10,479</b>	<b>6306</b>	<b>16,785</b>	<b>100%</b>

\* Where Clients recorded two principal disabilities, this research has used only the first one.

**Figure 16: Carer support Clients, by sex and principal disability**



### Observations

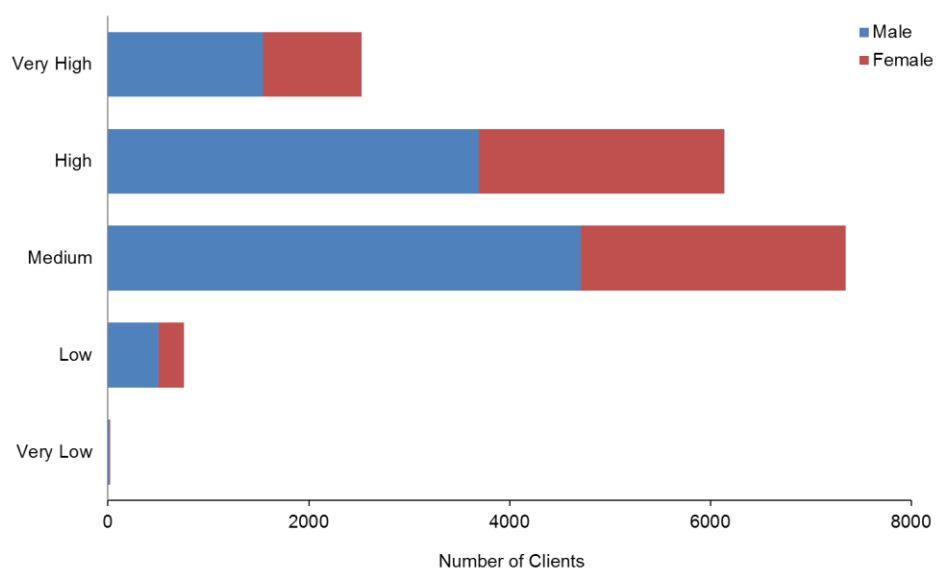
- Almost a half of carer support Clients have an intellectual disability.
- More than a quarter of carer support clients have ASD and 81% of these are male.

## Support package allocation

**Table 24: Carer support Clients, by SPA level and sex**

SPA level	Male	Female	Total	%
Very Low	15	6	21	0
Low	508	250	758	5
Medium	4714	2631	7345	44
High	3696	2441	6137	37
Very High	1546	978	2524	15
<b>Total</b>	<b>10,464</b>	<b>6300</b>	<b>16,764</b>	<b>100</b>

**Figure 17: Carer support Clients, by SPA level and sex**



### Observation

- Most (81%) carer support Clients have Medium to High SPA levels.

# Community residential services

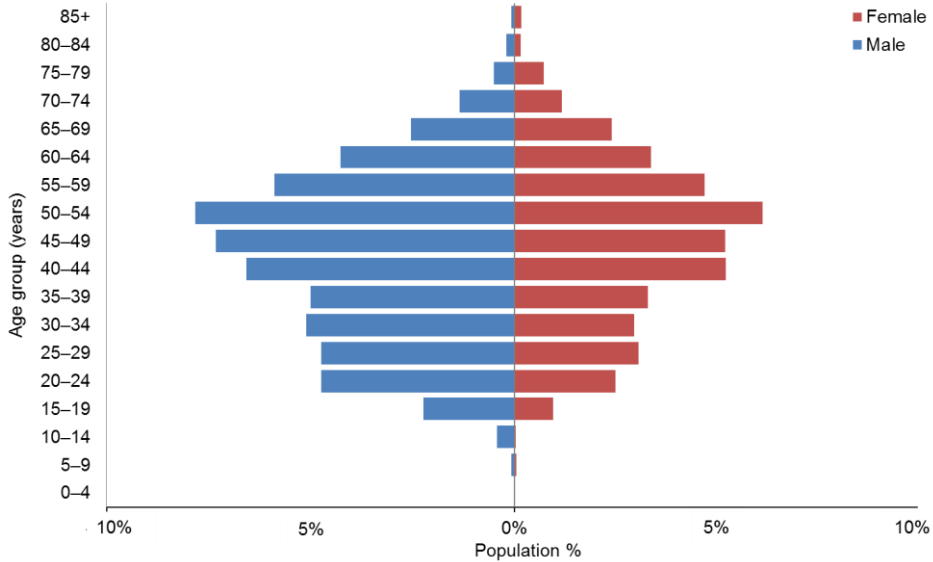
This section provides demographic profiles of the 6600 DSS Clients receiving community residential services. It does not analyse residential Clients living in hospitals or rest home services.

## Age and sex

**Table 25: Community residential services Clients, by age and sex**

Age group	Male	Female	Total
0-4	1	1	2
5-9	5	3	8
10-14	28	2	30
15-19	149	63	212
20-24	271	165	436
25-29	316	203	519
30-34	340	196	536
35-39	333	218	551
40-44	438	345	783
45-49	488	344	832
50-54	521	405	926
55-59	392	311	703
60-64	284	223	507
65-69	169	159	328
70-74	89	78	167
75-79	33	48	81
80-84	13	10	23
85+	5	11	16
<b>Total</b>	<b>3875</b>	<b>2785</b>	<b>6660</b>
	<b>58%</b>	<b>42%</b>	

**Figure 18: Age and sex of community residential services Clients**



**Observations**

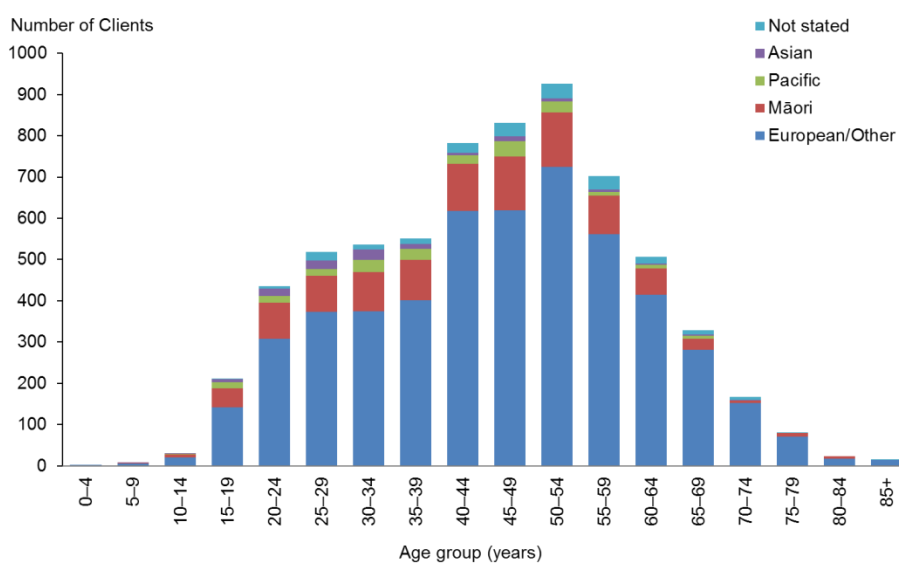
- The median age of community residential Clients is 47.
- There are significantly more males than females using community residential services.
- The 45–54 years age groups are the largest for both males and females.

# Ethnicity

**Table 26: Community residential services Clients, by ethnicity and age**

Age group	European / Other	Māori	Pacific	Asian	Not stated	Total
0-4	2					2
5-9	5	2		1		8
10-14	20	8	1	1		30
15-19	142	46	15	7	2	212
20-24	308	88	16	17	7	436
25-29	373	87	17	21	21	519
30-34	375	94	30	26	11	536
35-39	401	98	27	11	14	551
40-44	618	114	21	6	24	783
45-49	620	130	37	12	33	832
50-54	724	133	26	8	35	926
55-59	561	94	9	5	34	703
60-64	414	64	9	3	17	507
65-69	281	27	7	3	10	328
70-74	152	6		1	8	167
75-79	71	8		1	1	81
80-84	18	5				23
85+	14				2	16
<b>Total</b>	<b>5099</b>	<b>1004</b>	<b>215</b>	<b>123</b>	<b>219</b>	<b>6660</b>
	<b>77%</b>	<b>15%</b>	<b>3%</b>	<b>2%</b>	<b>3%</b>	<b>100%</b>

**Figure 19: Community residential services Clients, by ethnicity and age**



## Observations

- Pacific and Asian Clients are significantly under-represented users of residential services.
- Māori are only slightly under-represented.
- European/Other Clients are over-represented.

## Marital status

**Table 27: Community residential services Clients, by marital status and sex**

<b>Marital status</b>	<b>Male</b>	<b>Female</b>	<b>Total</b>
Non-partnered, not further defined	845	626	1471
Non-partnered, never married	403	236	639
Not stated	91	37	128
Married (not separated), not further defined	21	29	50
Non-partnered, divorced	8	10	18
Non-partnered, separated	8	8	16
Partnered, not further defined	8	6	14
Non-partnered, widowed	1	9	10
First marriage (not separated)	2	1	3
Opposite-sex partnership	1	2	3
Don't know	1	1	2
Response outside scope	1	1	2
Same-sex partnership	1	1	2
Blank	2484	1818	4302
<b>Total</b>	<b>3875</b>	<b>2785</b>	<b>6660</b>

## Observations

- Marital status is not recorded for 65% of community residential services Clients.
- Of those for whom marital status was recorded, only 3% were in some form of partnership.

## Accommodation

**Table 28: Community residential services Clients, by accommodation type and sex**

Accommodation	Male	Female	Total
Community residential home	3135	2224	5359
Other	249	214	463
Own / family home	235	140	375
Rental accommodation	62	70	132
Unknown	78	47	125
Boarder	73	50	123
Rest home / continuing care hospital	29	27	56
Housing New Zealand accommodation	6	11	17
Council accommodation	2	1	3
Prison	3		3
No fixed abode	1	1	2
Unit in a retirement village	1		1
Unit in a retirement village – licence to occupy	1		1
<b>Total</b>	<b>3875</b>	<b>2785</b>	<b>6660</b>

### Observation

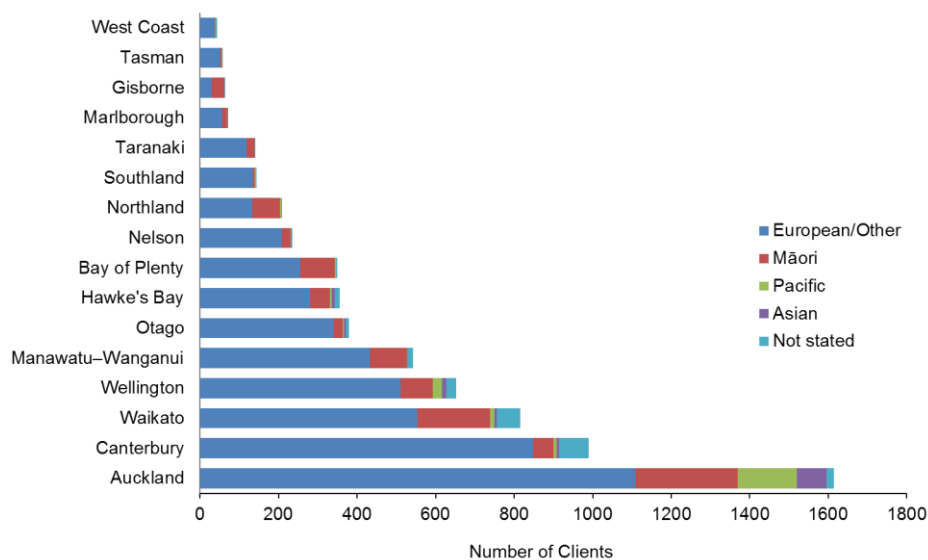
- The majority (80%) of Clients are living in community residential homes.

## Location

**Table 29: Community residential services Clients, by region and ethnicity**

Region	European / Other	Māori	Pacific	Asian	Not stated	Total	%
Auckland	1109	261	150	76	19	1615	24
Canterbury	849	52	7	7	74	989	15
Waikato	553	185	11	7	59	815	12
Wellington	511	81	24	11	25	652	10
Manawatu–Wanganui	432	95	2	1	12	542	8
Otago	340	23	4	5	8	380	6
Hawke's Bay	280	50	5	9	12	356	5
Bay of Plenty	256	87	3	1	2	349	5
Nelson	208	23	1	2	1	235	4
Northland	133	70	3	1		207	3
Southland	135	5	2		2	144	2
Taranaki	119	20		1	1	141	2
Marlborough	56	13	1	1		71	1
Gisborne	29	34			1	64	1
Tasman	52	3	1	1		57	1
West Coast	37	2	1		3	43	1
<b>Total</b>	<b>5099</b>	<b>1004</b>	<b>215</b>	<b>123</b>	<b>219</b>	<b>6660</b>	<b>100</b>

**Figure 20: Community residential services Clients, by region and ethnicity**



## Observation

- The Auckland and Waikato regions have the largest proportion (one-third) of residential Clients who are non-European/Other.

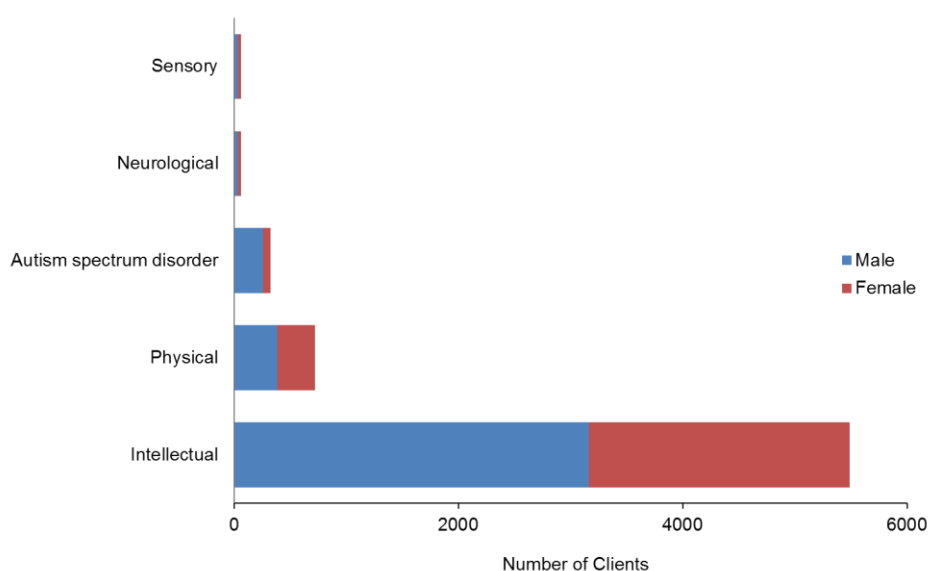
## Principal disability

**Table 30: Community residential services Clients, by principal disability and sex\***

Principal disability	Male	Female	Total	%
Intellectual	3160	2325	5485	82
Physical	388	336	724	11
Autism spectrum disorder	257	68	325	5
Neurological	35	28	63	1
Sensory	35	28	63	1
<b>Total</b>	<b>3875</b>	<b>2785</b>	<b>6660</b>	<b>100</b>

\* Where a Client recorded two principal disabilities, this report has used only the first one.

**Figure 21: Community residential services Clients, by principal disability and sex**



### Observation

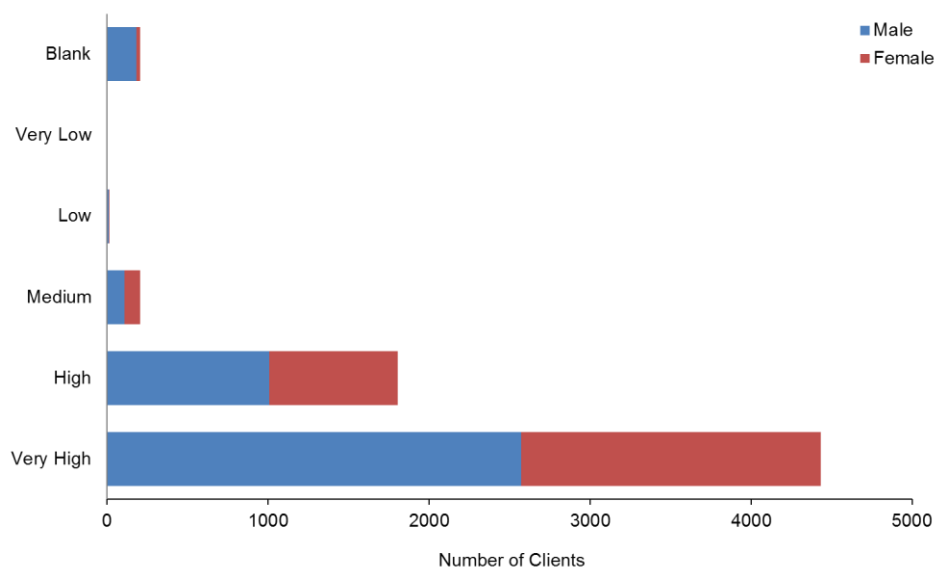
- Over 80% of Clients in community residential services have an intellectual disability as their primary disability. Many of these Clients also have a physical disability.

## Support package allocation

**Table 31: Community residential services Clients, by SPA level and sex**

SPA level	Male	Female	Total
Very High	2571	1863	4434
High	1006	800	1806
Medium	106	97	203
Low	8	2	10
Very Low	1	0	1
Blank	183	23	206
<b>Total</b>	<b>3875</b>	<b>2785</b>	<b>6660</b>

**Figure 22: Community residential services Clients, by SPA level and sex**



### Observation

- 94% of community residential services Clients have High or Very High SPAs.

# Supported living

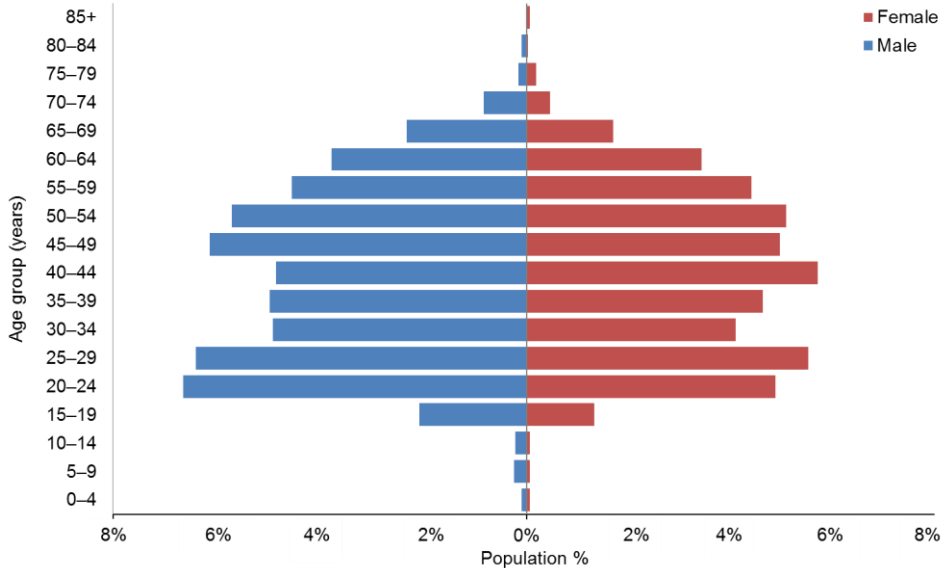
This section provides demographic profiles of the 3283 DSS Clients using supported living services. Some of these Clients will also appear in demographics for other services.

## Age and sex

**Table 32: Clients using supported living services, by age and sex**

Age group	Male	Female	Total
0-4	3	2	5
5-9	8	2	10
10-14	7	2	9
15-19	68	43	111
20-24	218	158	376
25-29	210	179	389
30-34	161	133	294
35-39	163	150	313
40-44	159	185	344
45-49	201	161	362
50-54	187	165	352
55-59	149	143	292
60-64	124	111	235
65-69	76	55	131
70-74	27	15	42
75-79	5	6	11
80-84	3	1	4
85+		2	2
<b>Total</b>	<b>1769</b>	<b>1513</b>	<b>3282</b>
	<b>54%</b>	<b>46%</b>	

**Figure 23: Age and sex of Clients using supported living services**



**Observations**

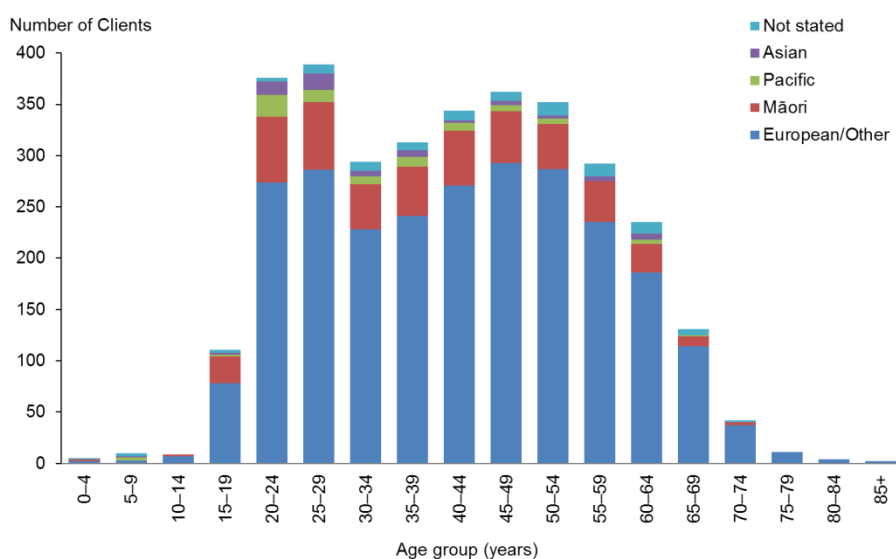
- The median age of supported living Clients is 41 years.
- There are slightly more males than females receiving supported living services.
- The number of Clients using supported living services has increased by 486 (17%) since 2013.

## Ethnicity

**Table 33: Clients using supported living services, by ethnicity and age**

Age group	European / Other	Māori	Pacific	Asian	Not stated	Total
0-4	2	2			1	5
5-9	3		3	1	3	10
10-14	7	2				9
15-19	78	26	2	2	3	111
20-24	274	64	21	13	4	376
25-29	286	66	12	16	9	389
30-34	228	44	8	5	9	294
35-39	241	48	10	6	8	313
40-44	271	53	8	2	10	344
45-49	293	50	6	4	9	362
50-54	287	44	5	3	13	352
55-59	235	40		5	12	292
60-64	186	28	4	6	11	235
65-69	114	10	1		6	131
70-74	37	3			2	42
75-79	11					11
80-84	4					4
85+	2					2
<b>Total</b>	<b>2559</b>	<b>480</b>	<b>80</b>	<b>63</b>	<b>100</b>	<b>3282</b>
	<b>78%</b>	<b>15%</b>	<b>2%</b>	<b>2%</b>	<b>3%</b>	

**Figure 24: Clients using supported living services, by ethnicity and age group**



## Observations

- European/Other people are significantly over-represented among users of supported living services.
- Māori are slightly under-represented.
- Pacific and Asian people are significantly under-represented.

## Marital status

**Table 34: Clients using supported living services, by marital status and sex**

Marital status	Male	Female	Total
Non-partnered, not further defined	382	276	658
Non-partnered, never married	148	121	269
Married (not separated), not further defined	52	62	114
Not stated	34	28	62
Partnered, not further defined	23	33	56
Non-partnered, separated	8	20	28
Non-partnered, divorced	6	16	22
First marriage (not separated)	2	8	10
Non-partnered, widowed	1	6	7
Opposite-sex partnership	1	3	4
Don't know	1	2	3
Blank	1111	938	2049
<b>Total</b>	<b>1769</b>	<b>1513</b>	<b>3282</b>

## Observations

- Marital status was not recorded for almost two-thirds of Clients.
- Of the remaining Clients, 80% do not have a partner.

## Accommodation

**Table 35: Clients using supported living services, by accommodation type and sex**

Accommodation	Male	Female	Total
Own / family home	615	537	1152
Rental accommodation	542	479	1021
Unknown	166	139	305
Community residential home	160	105	265
Housing New Zealand accommodation	84	102	186
Other	105	74	179
Council accommodation	42	34	76
Boarder	43	30	73
Rest home / continuing care hospital	7	4	11
Unit in a retirement village	2	3	5
No fixed abode		3	3
Prison	2	1	3
Unit in a retirement village – licence to occupy	1	2	3
<b>Total</b>	<b>1769</b>	<b>1513</b>	<b>3282</b>

### Observations

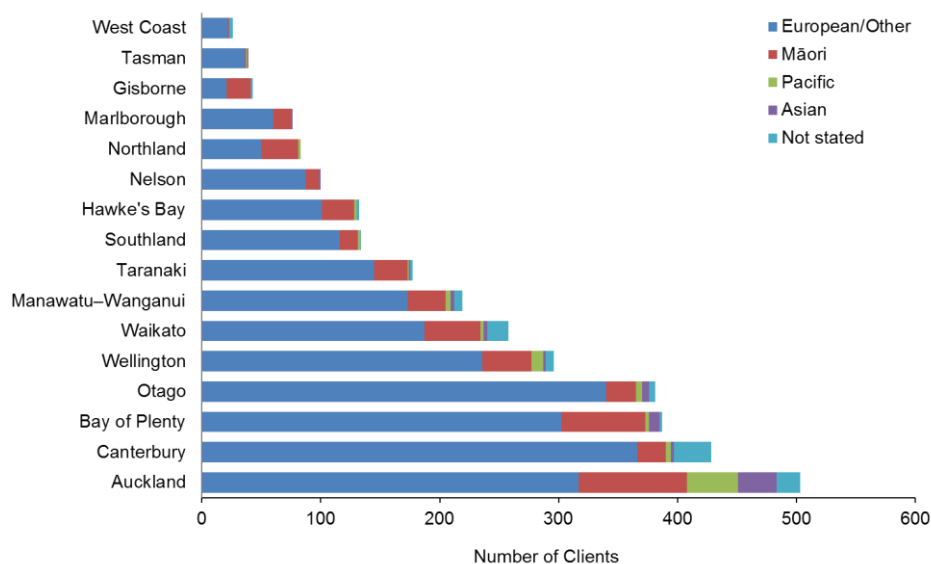
- One-third of Clients receiving supported living services are living in their own or the family home.
- Almost another third live in rental accommodation.

## Location

**Table 36: Clients using supported living services, by ethnicity and region**

Region	European / Other	Māori	Pacific	Asian	Not stated	Total	%
Auckland	317	91	43	32	20	503	15
Canterbury	366	24	4	3	31	428	13
Bay of Plenty	302	71	3	9	2	387	12
Otago	340	25	5	6	5	381	12
Wellington	236	41	10	2	7	296	9
Waikato	187	47	3	3	18	258	8
Manawatu–Wanganui	173	32	4	3	7	219	7
Taranaki	145	28	1	1	2	177	5
Southland	116	15	2		1	134	4
Hawke’s Bay	101	27	2		2	132	4
Nelson	87	11		2		100	3
Northland	50	31	2			83	3
Marlborough	60	15		1		76	2
Gisborne	21	20			2	43	1
Tasman	36	1	1	1		39	1
West Coast	22	1			3	26	1
<b>Total</b>	<b>2559</b>	<b>480</b>	<b>80</b>	<b>63</b>	<b>100</b>	<b>3282</b>	<b>100</b>

**Figure 25: Clients using supported living services, by ethnicity and region**



## Observation

- More than a third of Auckland Clients using supported living services are of non-European/Other ethnicity.
- The Bay of Plenty and Otago regions are significantly over-represented in numbers of people using supported living services.

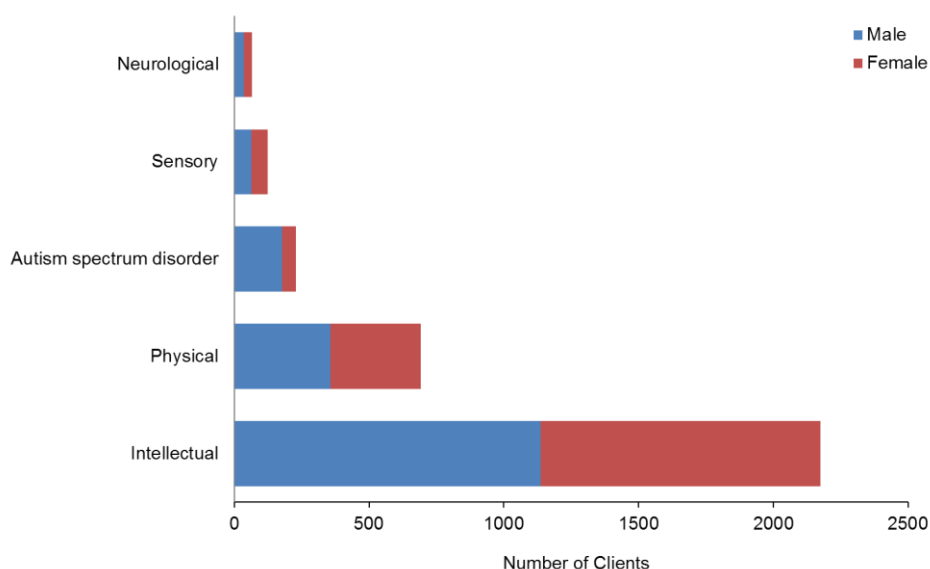
## Principal disability

**Table 37: Clients using supported living services, by principal disability and sex\***

Principal disability	Male	Female	Total	%
Intellectual	1137	1038	2175	66
Physical	356	335	691	21
Autism spectrum disorder	178	50	228	7
Sensory	62	61	123	4
Neurological	36	29	65	2
<b>Total</b>	<b>1769</b>	<b>1513</b>	<b>3282</b>	<b>100</b>

\* Where a Client recorded two principal disabilities, this research has used only the first one.

**Figure 26: Clients using supported living services, by principal disability and sex**



### Observation

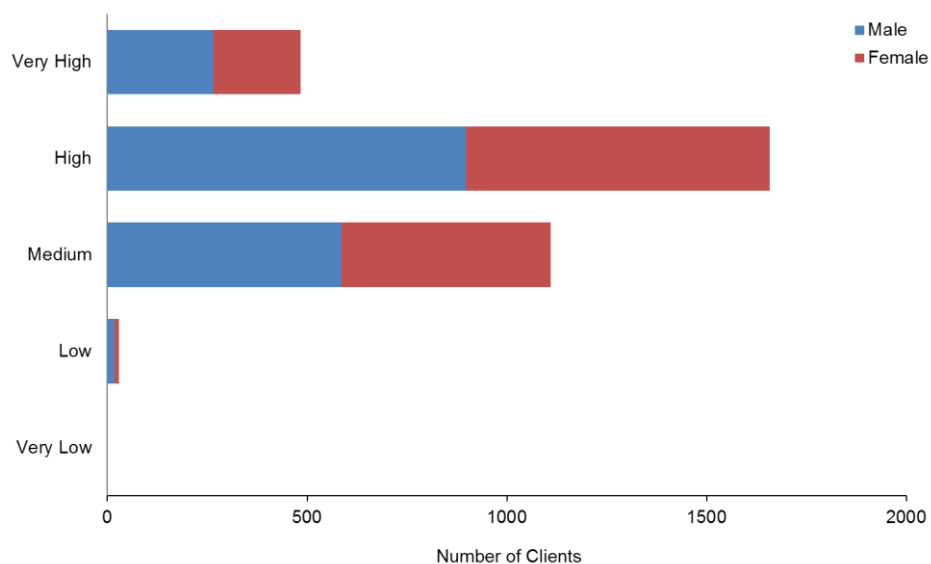
- Two-thirds (66%) of Clients using supported living services have an intellectual disability as their primary disability.

## Support package allocation

**Table 38: Clients using supported living services, by SPA level and sex**

SPA level	Male	Female	Total
Very Low	1	0	1
Low	18	11	29
Medium	586	524	1110
High	898	760	1658
Very High	266	218	484
<b>Total</b>	<b>1769</b>	<b>1513</b>	<b>3282</b>

**Figure 27: Clients using supported living services, by SPA level and sex**



### Observation

- Most Clients using supported living services have a Medium (33%) or High (51%) SPA level.

# Respite services

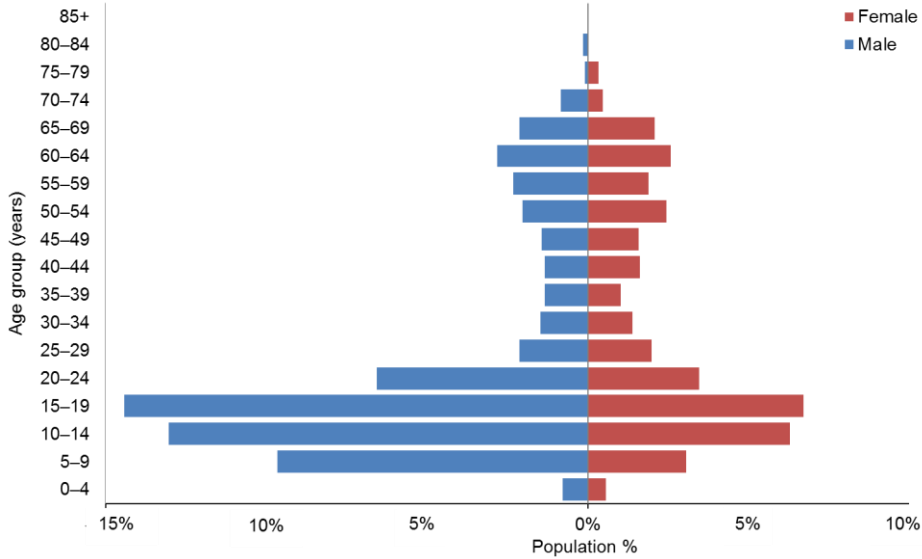
This section provides demographic profiles of the 2163 DSS Clients using respite services. Some of these Clients will also appear in demographics for other services.

## Age and sex

**Table 39: Respite Clients, by age and sex**

Age group	Male	Female	Total
0-4	17	12	29
5-9	209	66	275
10-14	282	136	418
15-19	312	145	457
20-24	142	75	217
25-29	46	43	89
30-34	32	30	62
35-39	29	22	51
40-44	29	35	64
45-49	31	34	65
50-54	44	53	97
55-59	50	41	91
60-64	61	56	117
65-69	46	45	91
70-74	18	10	28
75-79	2	7	9
80-84	3		3
85+			0
<b>Total</b>	<b>1353</b>	<b>810</b>	<b>2163</b>
	<b>63%</b>	<b>37%</b>	

**Figure 28: Age and sex of respite Clients**



**Observations**

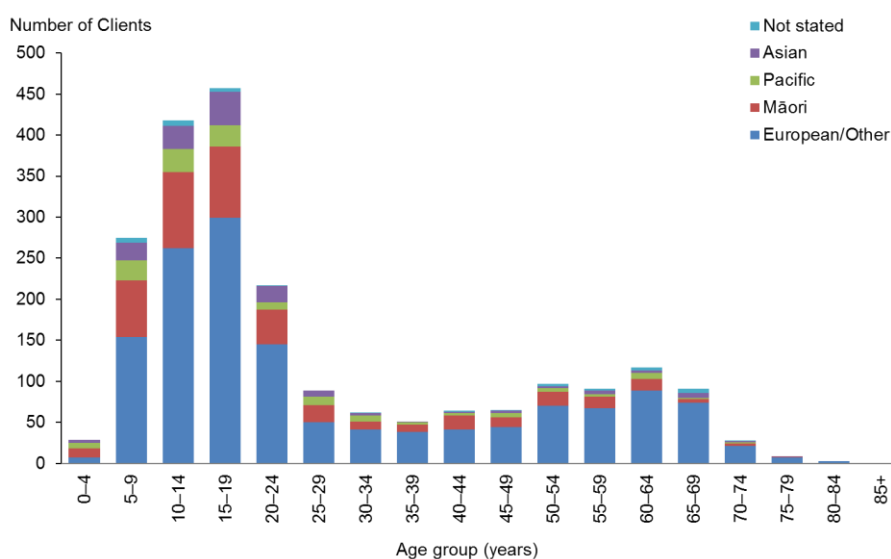
- The median age of respite Clients is 18 years.
- There are significantly more males (63%) than females using respite.
- Over half (55%) of respite users are under the age of 20 years.

# Ethnicity

**Table 40: Respite Clients, by age and ethnicity**

Age group	European / Other	Māori	Pacific	Asian	Not stated	Total
0-4	7	11	7	4		29
5-9	154	69	24	22	6	275
10-14	262	93	28	28	7	418
15-19	299	87	26	41	4	457
20-24	145	42	9	20	1	217
25-29	50	21	10	8		89
30-34	41	10	7	3	1	62
35-39	38	9	3	1		51
40-44	41	17	3	2	1	64
45-49	44	12	5	3	1	65
50-54	70	17	5	2	3	97
55-59	67	14	3	5	2	91
60-64	89	14	7	3	4	117
65-69	74	4	2	6	5	91
70-74	21	3	2	1	1	28
75-79	7	1		1		9
80-84	3					3
85+						0
<b>Total</b>	<b>1412</b>	<b>424</b>	<b>141</b>	<b>150</b>	<b>36</b>	<b>2163</b>
	<b>65%</b>	<b>20%</b>	<b>7%</b>	<b>7%</b>	<b>2%</b>	

**Figure 29: Respite Clients, by age and ethnicity**



## Observations

- European/Other people are slightly under-represented among users of respite.
- Māori and Asian people are slightly over-represented among users of respite. In 2013 Asian people were under-represented.

## Marital status

**Table 41: Respite Clients, by sex and marital status**

<b>Marital status</b>	<b>Male</b>	<b>Female</b>	<b>Total</b>
Non-partnered, not further defined	271	158	429
Non-partnered, never married	123	57	180
Married (not separated), not further defined	61	64	125
Not stated	23	23	46
Partnered, not further defined	10	11	21
Non-partnered, separated	7	8	15
Non-partnered, divorced	5	7	12
Response outside scope	3		3
First marriage (not separated)	1		1
Don't know		1	1
Non-partnered, widowed		9	9
Remarried (not separated)		2	2
Same-sex partnership		1	1
Blank	849	469	1318
<b>Total</b>	<b>1353</b>	<b>810</b>	<b>2163</b>

## Observation

- Over three-quarters (76%) of Clients for whom marital status is recorded are single. This aligns with the large numbers of respite Clients who are aged under 20 years.

## Accommodation

**Table 42: Respite Clients, by sex and accommodation type**

Accommodation	Male	Female	Total
Own / family home	806	473	1279
Rental accommodation	153	105	258
Unknown	121	83	204
Other	108	55	163
Housing New Zealand accommodation	95	51	146
Community residential home	45	24	69
Rest home / continuing care hospital	10	10	20
Boarder	8	5	13
Council accommodation	5	2	7
Unit in a retirement village	2	1	3
No fixed abode		1	1
<b>Total</b>	<b>1353</b>	<b>810</b>	<b>2163</b>

### Observation

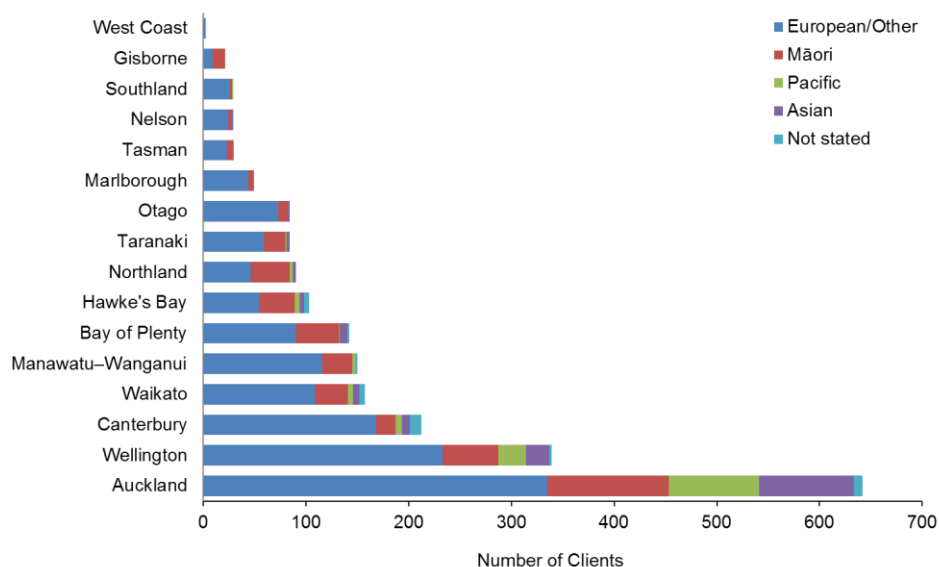
- The majority (59%) of respite Clients live in their own home or the family home.

## Location

**Table 43: Respite Clients, by ethnicity and region**

Region	European / Other	Māori	Pacific	Asian	Not stated	Total	%
Auckland	335	118	88	92	9	642	30
Wellington	233	54	27	23	2	339	16
Canterbury	168	19	6	8	11	212	10
Waikato	109	32	5	6	5	157	7
Manawatu–Wanganui	116	29	3		2	150	7
Bay of Plenty	90	42	1	7	2	142	7
Hawke's Bay	55	34	5	4	5	103	5
Northland	46	38	3	3		90	4
Taranaki	59	21	1	3		84	4
Otago	73	9		2		84	4
Marlborough	44	5				49	2
Tasman	23	6	1			30	1
Nelson	24	3		2		29	1
Southland	26	2	1			29	1
Gisborne	9	12				21	1
West Coast	2					2	0
<b>Total</b>	<b>1412</b>	<b>424</b>	<b>141</b>	<b>150</b>	<b>36</b>	<b>2163</b>	<b>100</b>

**Figure 30: Respite Clients, by ethnicity and region**



## Observations

- There are regional disparities in the allocation of respite.
- The Wellington region is over-represented, with 10% of the country's DSS Clients living in the region but 16% of the Clients using respite.
- The Canterbury region is under-represented, with 13% of the country's DSS Clients living in the region but only 10% of the Clients using respite.

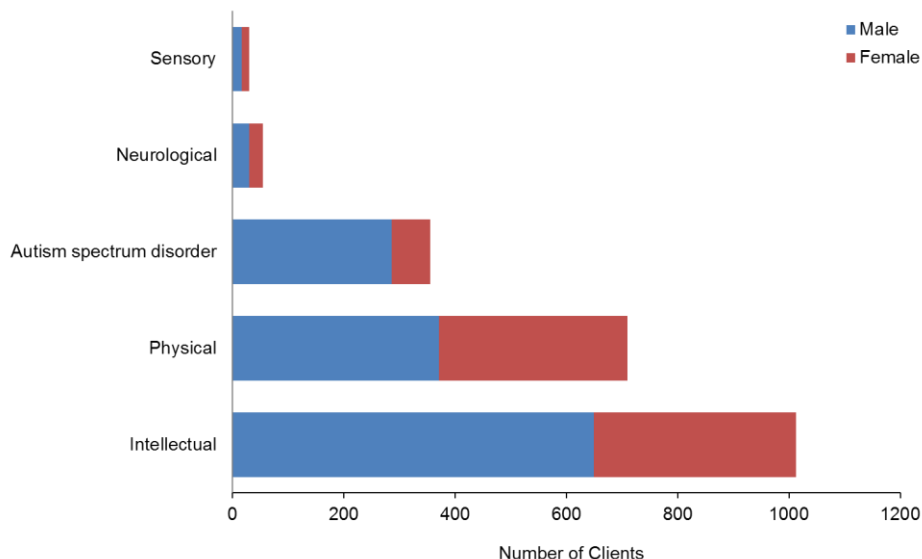
## Principal disability

**Table 44: Respite Clients, by sex and disability type\***

Disability type	Male	Female	Total	%
Intellectual	649	363	1012	47
Physical	371	339	710	33
Autism spectrum disorder	286	70	356	16
Neurological	30	25	55	3
Sensory	17	13	30	1
<b>Total</b>	<b>1353</b>	<b>810</b>	<b>2163</b>	<b>100</b>

\* Where a Client recorded two principal disabilities, this report has used only the first one.

**Figure 31: Respite Clients, by sex and disability type**



### Observation

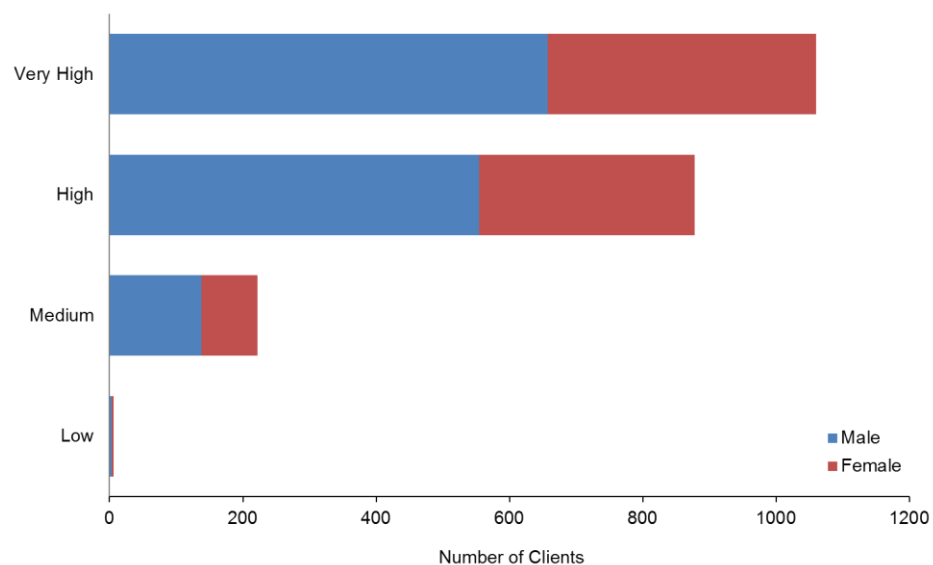
- Clients with intellectual disabilities make up 47% of respite care users.

## Support package allocation

**Table 45: Respite Clients, by SPA level and sex**

SPA level	Male	Female	Total
Low	3	3	6
Medium	138	84	222
High	555	323	878
Very High	657	403	1060
<b>Total</b>	<b>1353</b>	<b>813</b>	<b>2166</b>

**Figure 32: Respite Clients, by SPA level and sex**



### Observation

- Almost half (49%) of respite Clients have Very High SPAs.

# Day programmes

DSS only funds day programmes for Clients who:

- were once living in institutions such as Tokanui and Kimberley, and/or
- are using High and Complex services allocated by the National Intellectual Disability Care Agency (NIDCA).

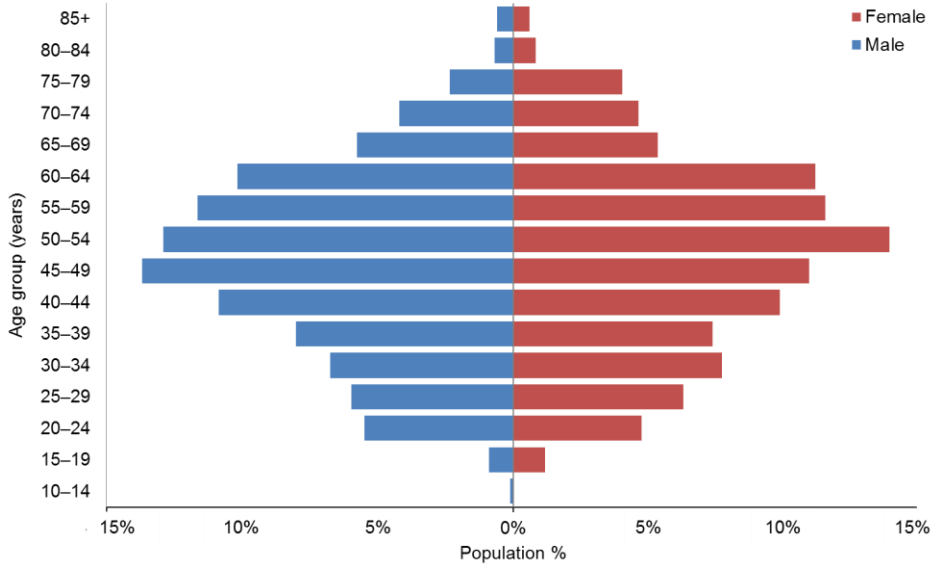
This section provides demographic profiling of the 1866 Clients allocated day-programme services from DSS. Many of these Clients may also appear in the demographics for other services.

## Age and sex

**Table 46: Day-programme Clients, by age and sex**

Age group	Male	Female	Total
0-4	0	0	0
5-9	0	0	0
10-14	1	0	1
15-19	9	10	19
20-24	56	40	96
25-29	61	53	114
30-34	69	65	134
35-39	82	62	144
40-44	111	83	194
45-49	140	92	232
50-54	132	117	249
55-59	119	97	216
60-64	104	94	198
65-69	59	45	104
70-74	43	39	82
75-79	24	34	58
80-84	7	7	14
85+	6	5	11
<b>Total</b>	<b>1023</b>	<b>843</b>	<b>1866</b>
	<b>55%</b>	<b>45%</b>	

**Figure 33: Day-programme Clients, by age and sex**



**Observations**

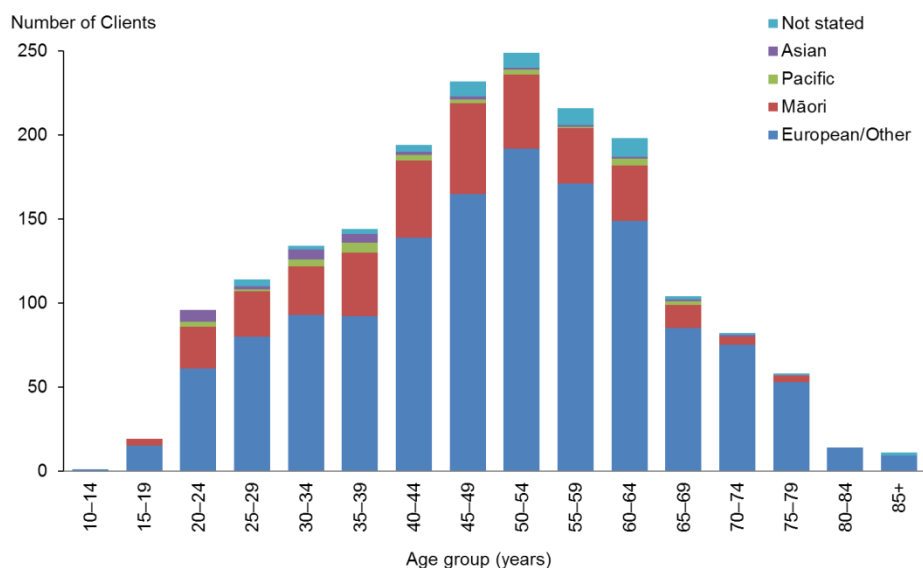
- The median age of day-programme Clients is 45 years.
- There are more male day-programme Clients (55%) than female (45%).
- The majority of day-programme Clients are aged between 30 and 55 years.

# Ethnicity

**Table 47: Day-programme Clients, by age and ethnicity**

Age group	European / Other	Māori	Pacific	Asian	Not stated	Total
10-14	1					1
15-19	15	4				19
20-24	61	25	3	7		96
25-29	80	27	1	2	4	114
30-34	93	29	4	6	2	134
35-39	92	38	6	5	3	144
40-44	139	46	3	2	4	194
45-49	165	54	2	2	9	232
50-54	192	44	3	1	9	249
55-59	171	33	1	1	10	216
60-64	149	33	4	1	11	198
65-69	85	14	2	1	2	104
70-74	75	5		1	1	82
75-79	53	4			1	58
80-84	14					14
85+	9				2	11
<b>Total</b>	<b>1394</b>	<b>356</b>	<b>29</b>	<b>29</b>	<b>58</b>	<b>1866</b>
	<b>75%</b>	<b>19%</b>	<b>1.5%</b>	<b>1.5%</b>	<b>3%</b>	

**Figure 34: Day-programme Clients, by age and ethnicity**



## Observations

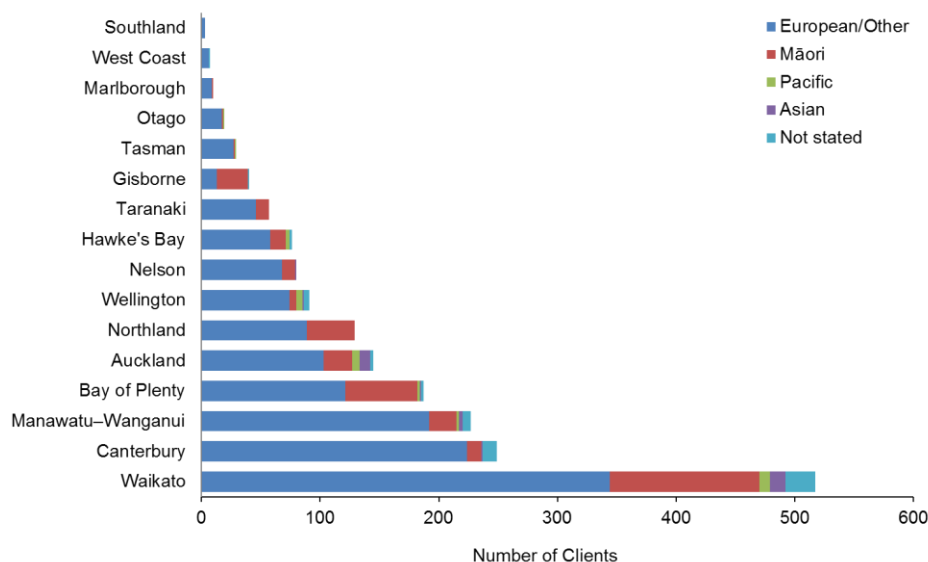
- European/Other (75%) are significantly over-represented in day-programme Clients.
- Māori (19%) are slightly over-represented.
- Pacific (1.5%) and Asian (1.5%) people are significantly under-represented.

## Location

**Table 48: Day-programme Clients, by region**

Region	European / Other	Māori	Pacific	Asian	Not stated	Total	%
Waikato	344	126	9	13	25	517	28
Canterbury	224	12		1	12	249	13
Manawatu–Wanganui	192	23	2	3	7	227	12
Bay of Plenty	121	61	2	1	2	187	10
Auckland	103	24	6	9	3	145	8
Northland	89	40				129	7
Wellington	74	6	5	1	5	91	5
Nelson	68	11		1		80	4
Hawke's Bay	58	13	3		2	76	4
Taranaki	46	11				57	3
Gisborne	13	26			1	40	2
Tasman	27	1	1			29	2
Otago	17	1	1			19	1
Marlborough	9	1				10	1
West Coast	6				1	7	0
Southland	3					3	0
<b>Total</b>	<b>1394</b>	<b>356</b>	<b>29</b>	<b>29</b>	<b>58</b>	<b>1866</b>	

**Figure 35: Day-programme Clients, by region**



## Observations

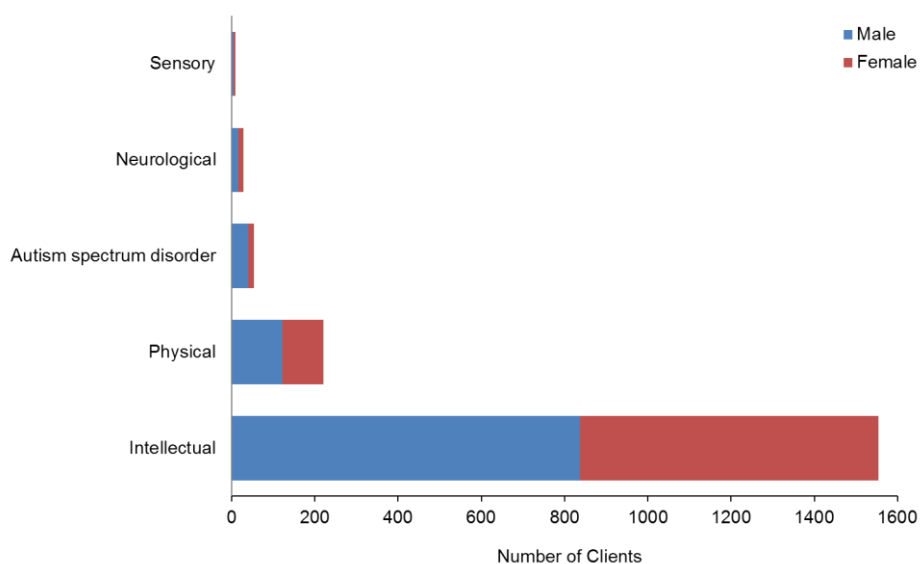
- Waikato region has twice as many day-programme Clients as the next largest region, Canterbury.
- Waikato, Canterbury and Manawatu–Wanganui have the largest numbers of day-programme Clients due to the closures of Tokanui, Sunnyside and Kimberley, respectively, in these areas, and the agreement of the Ministry to fund day programmes for these Clients.

## Principal disability

**Table 49: Day-programme Clients, by principal disability**

Disability type	Male	Female	Total	%
Intellectual	838	716	1554	83
Physical	123	98	221	12
Autism spectrum disorder	41	13	54	3
Neurological	17	11	28	2
Sensory	4	5	9	0
<b>Total</b>	<b>1023</b>	<b>843</b>	<b>1866</b>	<b>100</b>

**Figure 36: Day-programme Clients, by principal disability**



### Observation

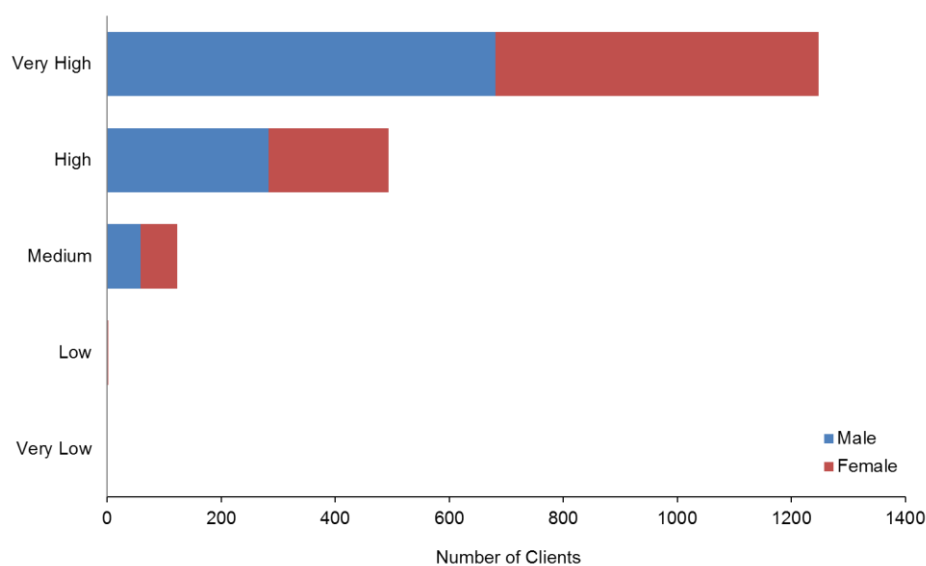
- The majority (83%) of Clients using day-programme services have intellectual disabilities.

## Support package allocation

**Table 50: Day-programme Clients, by SPA level**

SPA level	Male	Female	Total
Very Low		0	0
Low	1	1	2
Medium	58	65	123
High	283	210	493
Very High	681	567	1248
<b>Total</b>	<b>1023</b>	<b>843</b>	<b>1866</b>

**Figure 37: Day-programme Clients, by SPA level**



### Observation

- A large majority (67%) of day-programme Clients have a Very High SPA level, and a further 26% have a High level.

---

# Client demographics, by disability

This section focuses on the five broad disability types and provides the demographic profiles of the DSS Clients with each of these disabilities.

While all Clients are recorded as having one principal disability, some Clients are listed with two principal disabilities. This report focuses on only the first principal disability that was recorded.

<b>Principal disability type</b>	<b>Total</b>	<b>%</b>
Intellectual	15,578	48
Physical	9901	31
Autism spectrum disorder	5077	16
Sensory	1030	3
Neurological	661	2
<b>Total</b>	<b>32,247</b>	<b>100</b>

For a list of disabilities included in the different principal disability types see the Appendix. Note that if a person has two principal disabilities, then both disabilities are counted in this table.

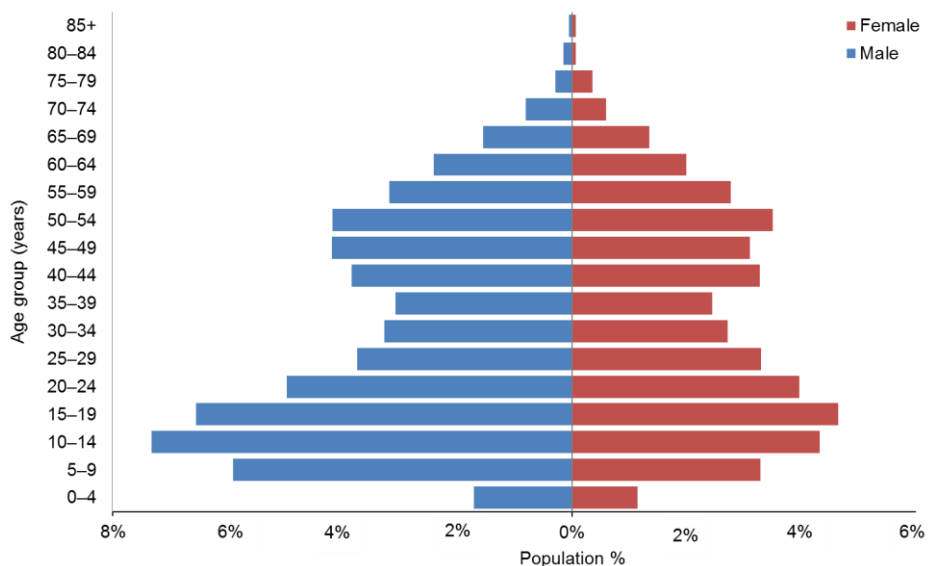
# Intellectual disability

## Age and sex

**Table 51: Clients with intellectual disability, by age and sex**

Age group	Male	Female	Total
0-4	266	178	444
5-9	920	511	1431
10-14	1140	672	1812
15-19	1020	723	1743
20-24	774	618	1392
25-29	583	513	1096
30-34	508	423	931
35-39	479	381	860
40-44	597	510	1107
45-49	651	483	1134
50-54	649	546	1195
55-59	496	431	927
60-64	374	311	685
65-69	241	210	451
70-74	125	93	218
75-79	45	56	101
80-84	22	11	33
85+	7	11	18
<b>Total</b>	<b>8897</b>	<b>6681</b>	<b>15,578</b>
	<b>57%</b>	<b>43%</b>	

**Figure 38: Age and sex of Clients with intellectual disability**



**Observations**

- The median age of Clients with an intellectual disability is 28 years.
- There are significantly more males (57%) with an intellectual disability using DSS than females.
- There are two peaks in the age group profiles for both sexes: 10–19 years and 40–54 years.

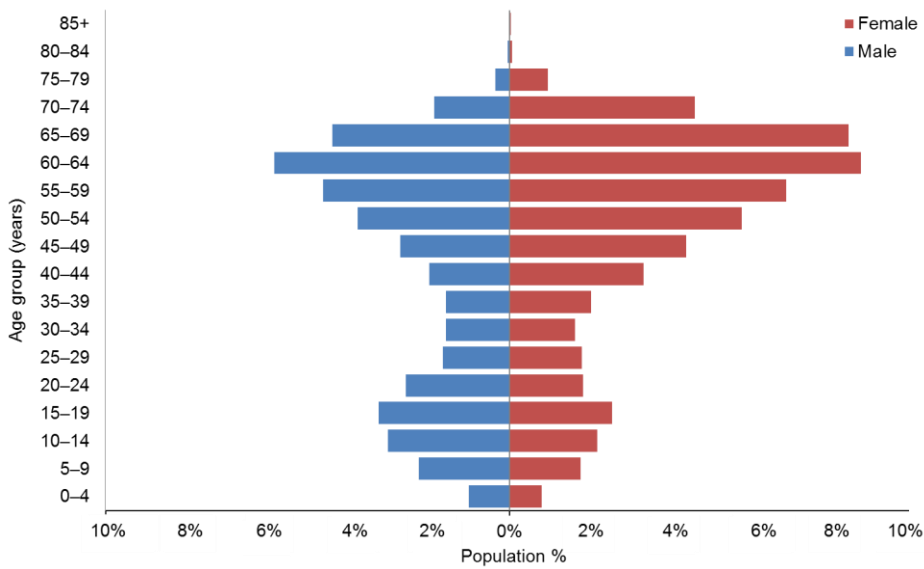
# Physical disability

## Age and sex

**Table 52: Clients with physical disability, by age and sex**

Age group	Male	Female	Total
0-4	99	79	178
5-9	223	175	398
10-14	298	216	514
15-19	321	252	573
20-24	254	181	435
25-29	164	177	341
30-34	155	160	315
35-39	156	200	356
40-44	197	329	526
45-49	268	433	701
50-54	372	570	942
55-59	457	678	1135
60-64	577	862	1439
65-69	434	831	1265
70-74	185	454	639
75-79	35	94	129
80-84	5	7	12
85+		3	3
<b>Total</b>	<b>4200</b>	<b>5701</b>	<b>9901</b>
	<b>42%</b>	<b>58%</b>	

**Figure 39: Clients with physical disability, by age and sex**



**Observations**

- The median age of Clients with a physical disability is 52 years.
- Females make up 58% of Clients with a physical disability.
- Clients with a physical disability are a markedly older group, with 56% of Clients aged over 45 years.

# Autism spectrum disorder

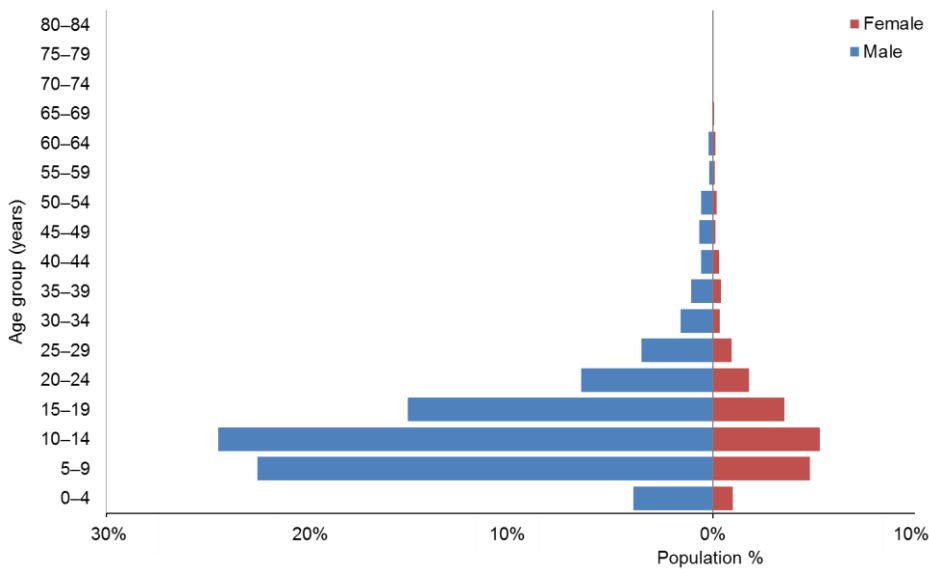
This section describes Clients who have one of the following disabilities: Asperger's syndrome; autism spectrum disorder (ASD); other ASD.

## Age and sex

**Table 53: Clients with ASD, by age and sex**

Age group	Male	Female	Total
0-4	199	50	249
5-9	1144	244	1388
10-14	1242	269	1511
15-19	766	180	946
20-24	330	90	420
25-29	180	47	227
30-34	81	17	98
35-39	55	20	75
40-44	29	15	44
45-49	34	7	41
50-54	30	10	40
55-59	9	5	14
60-64	10	7	17
65-69	2	3	5
70-74		1	1
80-84		1	1
<b>Total</b>	<b>4111</b>	<b>966</b>	<b>5077</b>
	<b>81%</b>	<b>19%</b>	

**Figure 40: Age and sex of Clients with ASD**



**Observations**

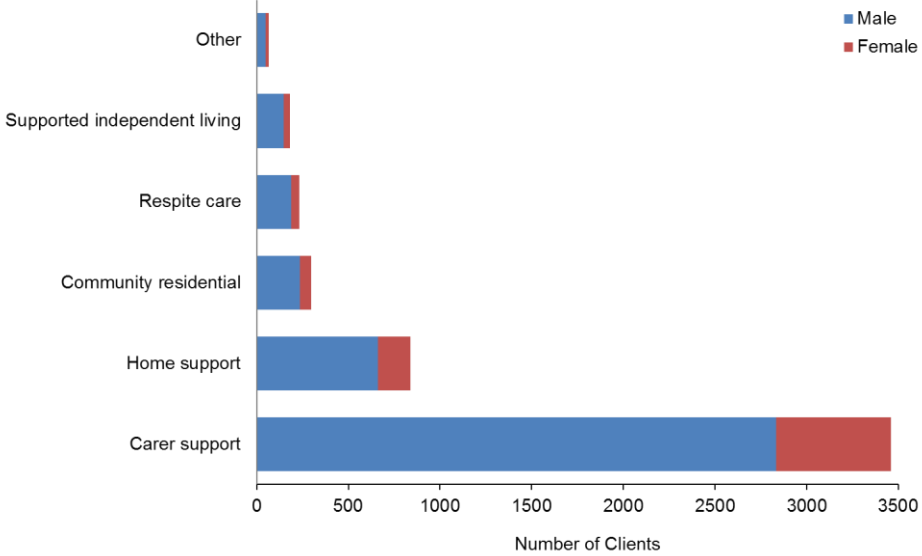
- The median age of Clients with ASD is 12 years.
- ASD Clients are predominantly male (81%).
- ASD Clients are predominantly young (80% of ASD Clients are aged under 20).

**Service usage**

**Table 54: ASD Clients, by sex and service usage**

Service type	Male	Female	Total	%
Carer support	2834	627	3461	68
Home support	660	179	839	17
Community residential	235	61	296	6
Respite care	187	47	234	5
Supported independent living	148	35	183	4
Other	47	17	64	1
<b>Total</b>	<b>4111</b>	<b>966</b>	<b>5077</b>	

**Figure 41: ASD Clients, by sex and service usage**



**Observation**

- Two-thirds of ASD Clients use carer support services, which is by far the most used disability support service used by this disability group.

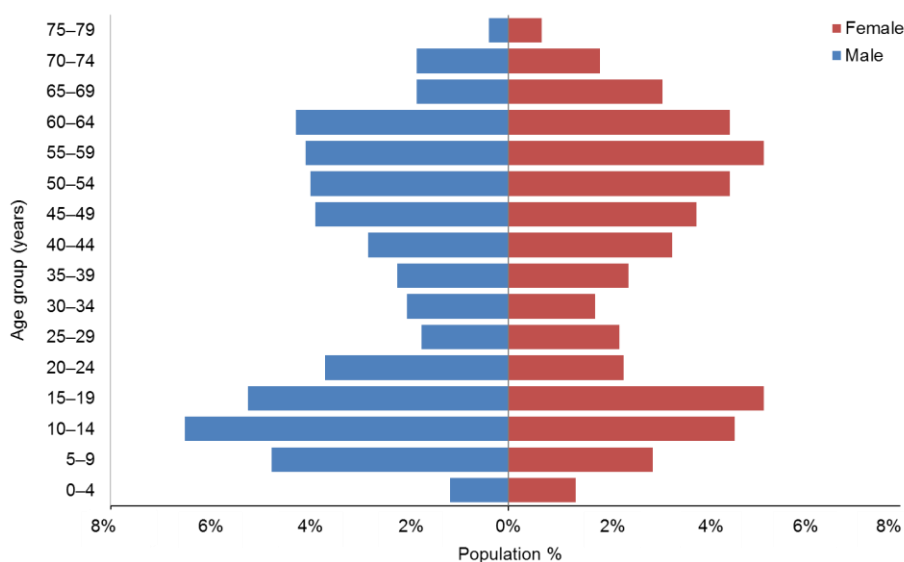
# Sensory disability

## Age and sex

**Table 55: Sensory disability Clients, by age and sex**

Age group	Male	Female	Total
0-4	12	14	26
5-9	49	30	79
10-14	67	47	114
15-19	54	53	107
20-24	38	24	62
25-29	18	23	41
30-34	21	18	39
35-39	23	25	48
40-44	29	34	63
45-49	40	39	79
50-54	41	46	87
55-59	42	53	95
60-64	44	46	90
65-69	19	32	51
70-74	19	19	38
75-79	4	7	11
<b>Total</b>	<b>520</b>	<b>510</b>	<b>1030</b>
	<b>50%</b>	<b>50%</b>	

**Figure 42: Age and sex of Clients with sensory disabilities**



### Observations

- The median age of Clients with sensory disabilities is 40 years.
- Males and females are evenly represented in this disability group.
- There are two peaks in the age distributions, with slightly more males in the 10–24 years age group and slightly more females in the 45–69 years group.

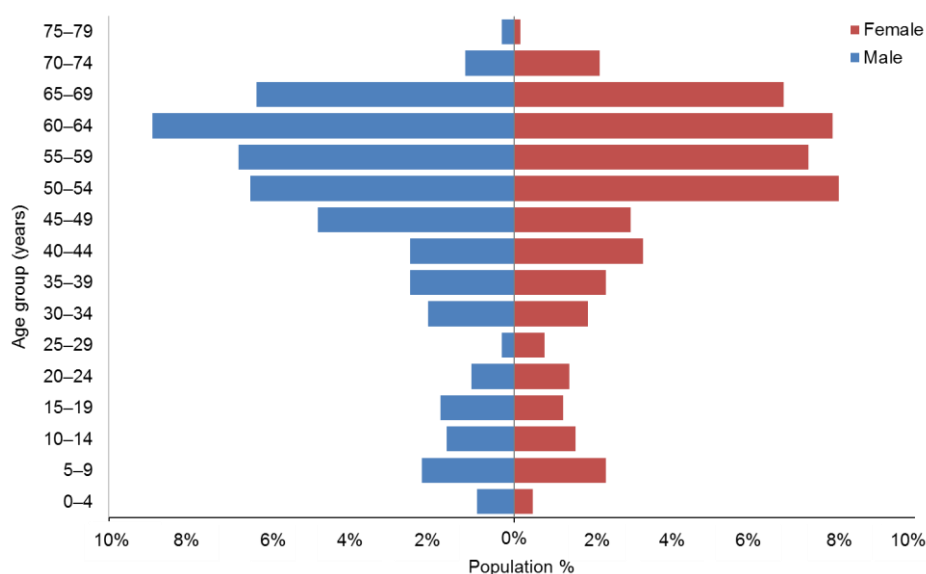
# Neurological disability

## Age and sex

**Table 56: Clients with neurological disability, by age and sex**

Age group	Male	Female	Total
0-4	6	3	9
5-9	15	15	30
10-14	11	10	21
15-19	12	8	20
20-24	7	9	16
25-29	2	5	7
30-34	14	12	26
35-39	17	15	32
40-44	17	21	38
45-49	32	19	51
50-54	43	53	96
55-59	45	48	93
60-64	59	52	111
65-69	42	44	86
70-74	8	14	22
75-79	2	1	3
<b>Total</b>	<b>332</b>	<b>329</b>	<b>661</b>
	<b>50%</b>	<b>50%</b>	

**Figure 43: Age and sex of Clients with neurological disability**



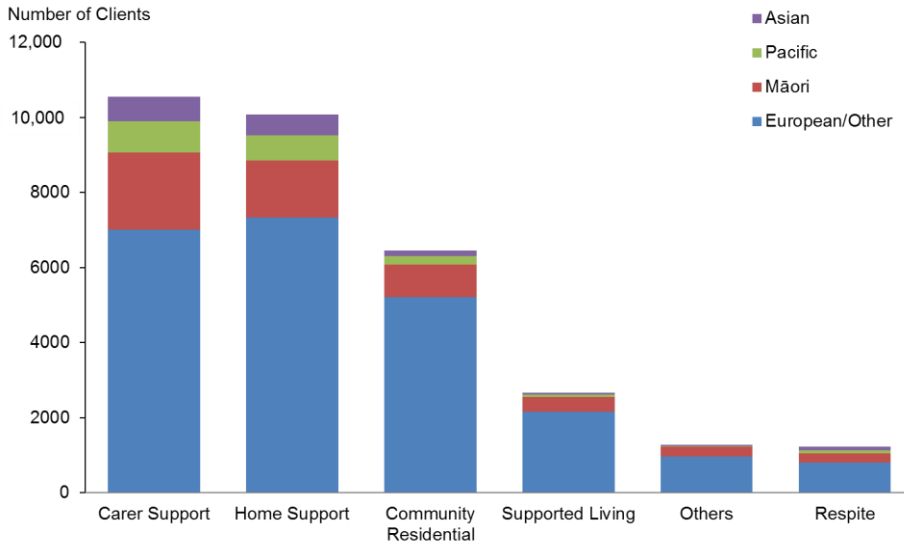
### Observations

- The median age of Clients with neurological disabilities is 53 years.
- Almost two-thirds (62%) of Clients with neurological disabilities using disability support services are aged over 50 years.

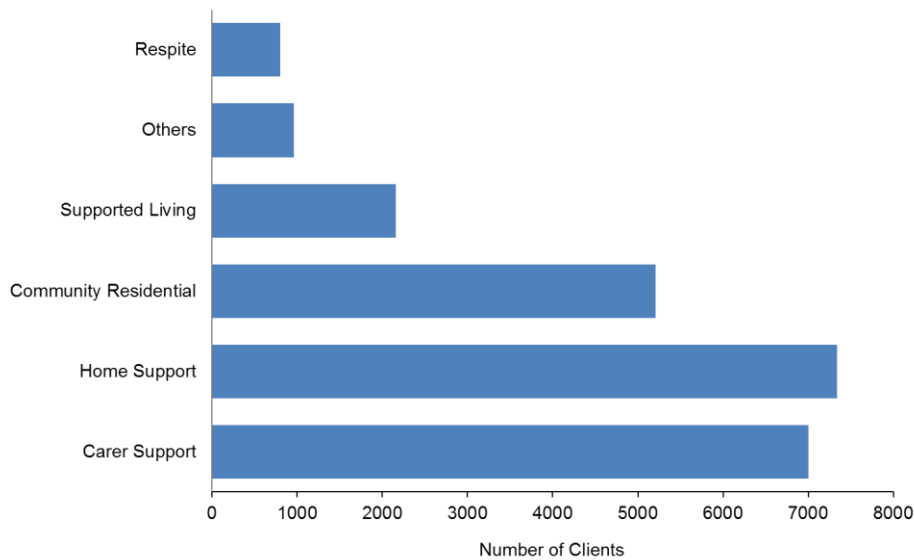
# Service usage, by ethnicity

This section illustrates service usage by each of the four main ethnic groups: European/Other, Māori, Pacific and Asian.

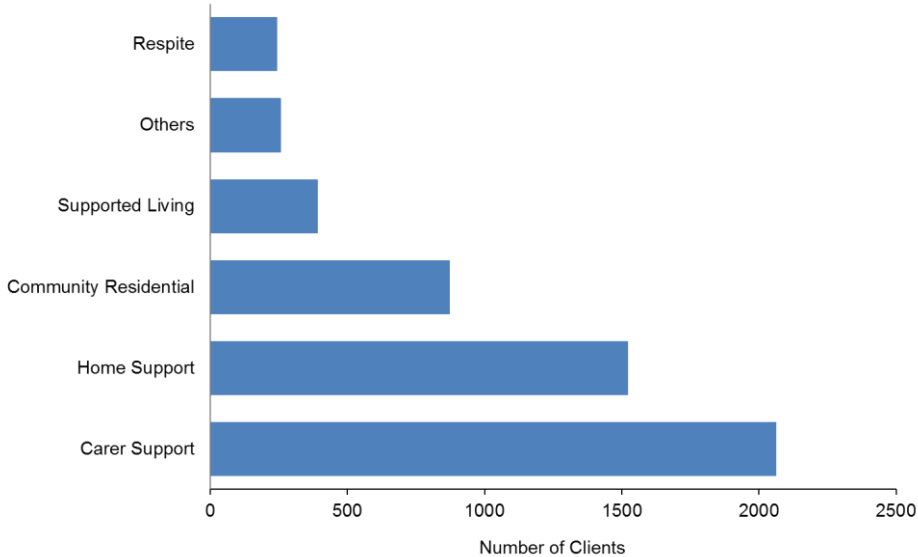
**Figure 44: Overall service usage, by ethnicity**



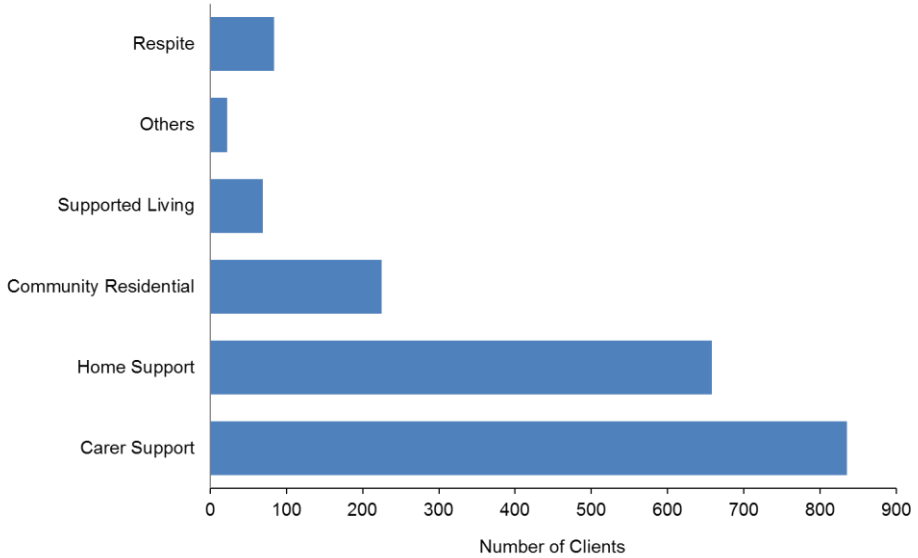
**Figure 45: Service usage by Clients of European/Other ethnicity**



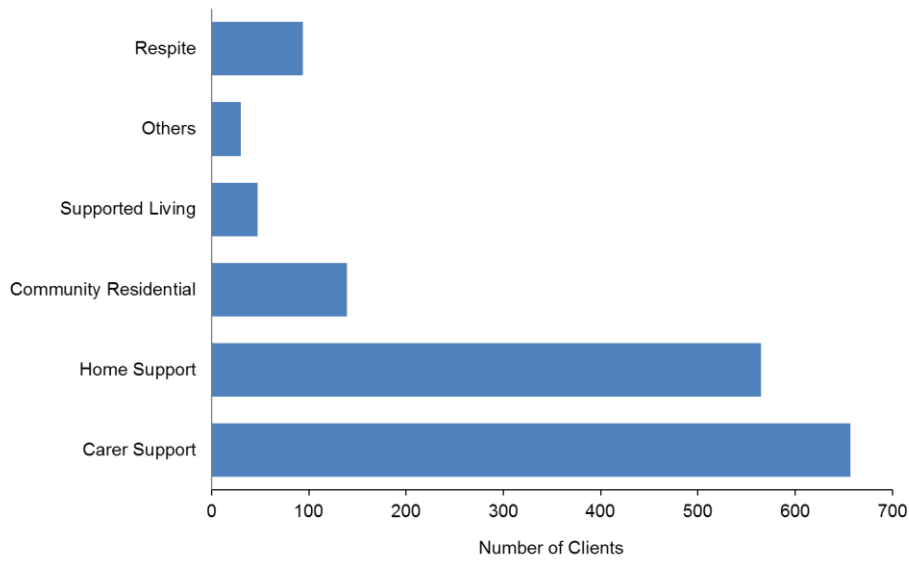
**Figure 46: Service usage by Clients of Māori ethnicity**



**Figure 47: Service usage by Clients of Pacific ethnicity**



**Figure 48: Service usage by Clients of Asian ethnicity**



---

# Glossary

<b>ASD</b>	Autism spectrum disorder.
<b>Ethnicity</b>	Each Client is allocated to a single ethnic group using the priority system. The aim of prioritisation is to ensure that where some need exists to assign people to a single ethnic group, ethnic groups of policy importance, or of small size, are not swamped by the NZ European ethnic group.
<b>NASC</b>	Needs Assessment Service Coordination. These services are funded by the Ministry of Health. Their role is to assess a person's disability-related support needs, and then to allocate and/or coordinate funding or services to meet these needs.
<b>Socrates</b>	A Ministry of Health information system, consisting of a database and computer application for managing the delivery of services to DSS Clients.
<b>SPA</b>	Support package allocation. This is the funding or range of disability support services allocated to a disabled Client to address their disability support needs, as identified by the Needs Assessment and Service Coordination organisation.

# Appendix: Disability types

**Table A1: Principal disability types, by number of DSS Clients**

Disability class	Principal disability	Count
Autism spectrum disorder	Asperger's syndrome	1139
	Autism spectrum disorder (ASD)	4183
	<b>Total</b>	<b>5322</b>
Intellectual	Birth asphyxia or intrauterine hypoxia	18
	Developmental delay, type not specified	1581
	Down syndrome (Trisomy 21)	1985
	Edwards' syndrome (Trisomy 18)	8
	Fragile X syndrome	96
	Intellectual disability (ID), type not specified	10,383
	Klinefelter's syndrome	27
	Learning disability / difficult / delay, type not specified	1001
	Microcephalus / microcephaly	78
	Other intellectual, learning or developmental disorder (specify)	484
	Prader-Willi syndrome	17
<b>Total</b>	<b>15,678</b>	
Neurological	Brain injury / head injury caused by accident (external cause)	100
	Brain injury, cause not specified	144
	Encephalitis	29
	Neurological disorder / disability, type not specified	81
	<b>Total</b>	<b>354</b>
Physical	Amputation / partial amputation of arm / hand	29
	Amputation / partial amputation of leg / foot	171
	Ankylosing spondylitis	36
	Arthrogryposis	37
	Ataxia (cerebellar, spinocerebellar, Friedreich's)	163
	Back injury due to accident (external cause)	27
	Cerebral palsy	1744
	Club foot or feet (talipes)	17
	Congenital absence / partial absence of arm / hand (upper limb reduction)	11
	Congenital absence / partial absence of leg / foot (lower limb reduction)	17
	Guillain Barre syndrome	24
	Kyphosis, lordosis or scoliosis	72
	Low birth weight / prematurity / short gestation	30
	Muscular dystrophy	271
	Non-malignant growth / tumour	13
	Osteoarthritis	758
Other bone, joint or cartilage disorder (specify)	215	

<b>Disability class</b>	<b>Principal disability</b>	<b>Count</b>
Physical (continued)	Other conditions originating around time of birth (specify)	42
	Other muscle and tendon disorder (specify)	85
	Other musculoskeletal (specify)	131
	Other spine or back disorder (specify)	183
	Paralysis, paresis (hemiplegia, paraplegia, tetraplegia, quadraplegia, diplegia)	548
	Polio and post-polio	92
	Polymyalgia rheumatica	9
	Prolapsed disc, disc degeneration, sciatica	45
	Rheumatoid arthritis	504
	Short stature / dwarfism (eg, achondroplasia)	37
	Spina bifida	335
	Spinal muscular atrophy	33
	Spinal stenosis	65
	Spondylosis	30
	Stroke, brain / subarachnoid haemorrhage, cerebrovascular accident (CVA), parietal / cerebral / cerebellar / middle cerebral artery (MCA) / thalamic / frontal lobe infarct	1796
	Systemic lupus erythematosus (lupus, SLE)	29
<b>Total</b>	<b>7599</b>	
Physical / intellectual	Other congenital or chromosomal defects affecting multiple systems (specify)	738
	Angleman's syndrome	1
	Patau's syndrome (Trisomy 13)	2
<b>Total</b>	<b>741</b>	
Physical / intellectual / neurological	Hydrocephalus / hydrocephaly	87
	Other brain or nervous system disorder (specify)	682
	<b>Total</b>	<b>769</b>
Physical / neurological	Huntington's	152
	Meningitis	22
	Motor neuron disease	117
	Multiple sclerosis	971
	Parkinson's disease	205
	<b>Total</b>	<b>1467</b>
Sensory	Blind or vision impaired, type not specified	482
	Congenital cataract (present at birth)	17
	Deaf or hearing impaired, type not specified	311
	Glaucoma	12
	Optic neuritis, optic atrophy	5
	Other cataract	2
	Other ear or hearing disorder (specify)	32
	Other eye or vision disorder (specify)	97
	Retinopathy, retinal dystrophy, retinitis pigmentosa, detached retina	54
	Other	1
	<b>Total</b>	<b>1013</b>

<b>Disability class</b>	<b>Principal disability</b>	<b>Count</b>
Other	Alcohol / drug-related disorder (excluding Korsakov's syndrome)	1
	Alzheimer's (including early onset)	6
	Angina	3
	Asthma	5
	Attention deficit / hyperactivity (eg, ADD, ADHD)	9
	Bipolar disorder (manic depression)	1
	Cancer (malignant, CA) (eg, leukaemia, lymphoma, melanoma, breast, lung, prostate, colon, neuroblastoma)	6
	Chronic back pain, type not specified	9
	Chronic fatigue syndrome / ME (myalgic encephalomyelitis)	36
	Chronic obstructive pulmonary or respiratory disease (COPD / CORD) (eg, chronic bronchitis, emphysema)	18
	Chronic pain / chronic pain syndrome, cause not specified (excludes chronic back pain)	3
	Congenital heart disease / defects / problems	6
	Cystic fibrosis	9
	Depression	2
	Diabetes (NIDDM or IDDM)	9
	Epilepsy, seizures	26
	Fibromyalgia	29
	Foetal alcohol syndrome (FAS)	4
	Haemophilia	1
	Heart attack (myocardial infarction)	3
	Heart failure	2
	Hypertension / high blood pressure	1
	Inflammatory bowel disease (eg, Crohn's disease, ulcerative colitis, other non-infective bowel disease)	1
	Ischaemic heart disease (IHD), type not specified	6
	Korsakov's syndrome / alcohol-related dementia	6
	Language delay	1
	Liver disease (eg, hepatitis, cirrhosis)	1
	Motor delay, developmental dyspraxia	9
	Neurofibromatosis	8
	Osteoporosis	20
	Other cancer / tumour (specify)	1
	Other connective tissue disorder (specify)	12
	Other dementia (specify)	4
	Other digestive disorder (specify)	3
	Other genitourinary disorder (specify)	2
	Other heart or blood vessel disorder (specify)	5
	Other nutritional, hormonal or metabolic disorder (specify)	3
	Other respiratory disorder (specify)	3
	Pick's	1
	Renal (kidney) failure, renal dialysis, haemodialysis	4

<b>Disability class</b>	<b>Principal disability</b>	<b>Count</b>
Other (continued)	Schizophrenia	4
	Systemic sclerosis / scleroderma	8
	TIA (transient ischaemic attack)	1
	Vascular dementia	1
	Unspecified	16
	<b>Total</b>	<b>309</b>
<b>Total</b>		<b>33,252</b>

Note: If a Client has two principal disabilities, then both disabilities are counted.