

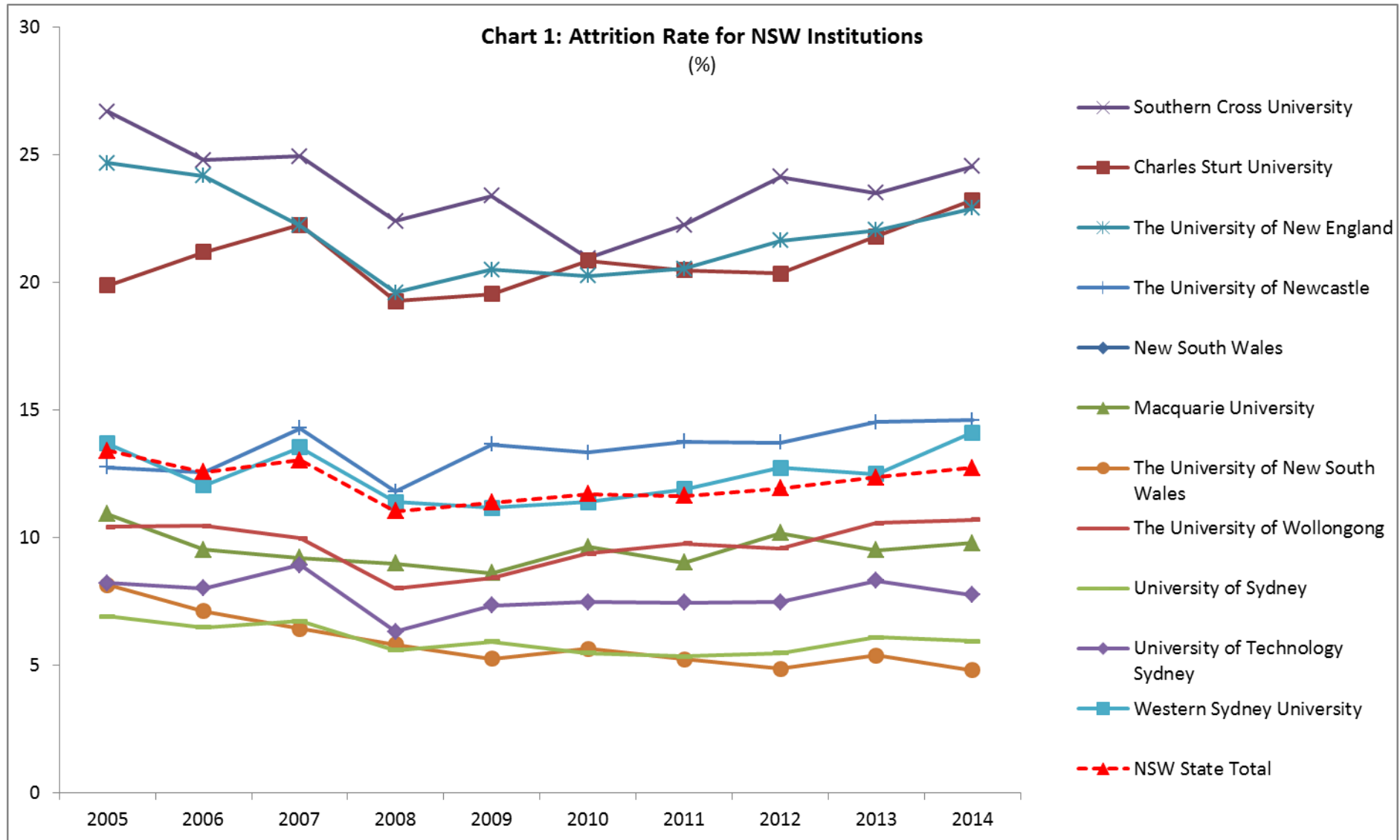
Appendix C – Attrition, Retention, Success and Completion Data

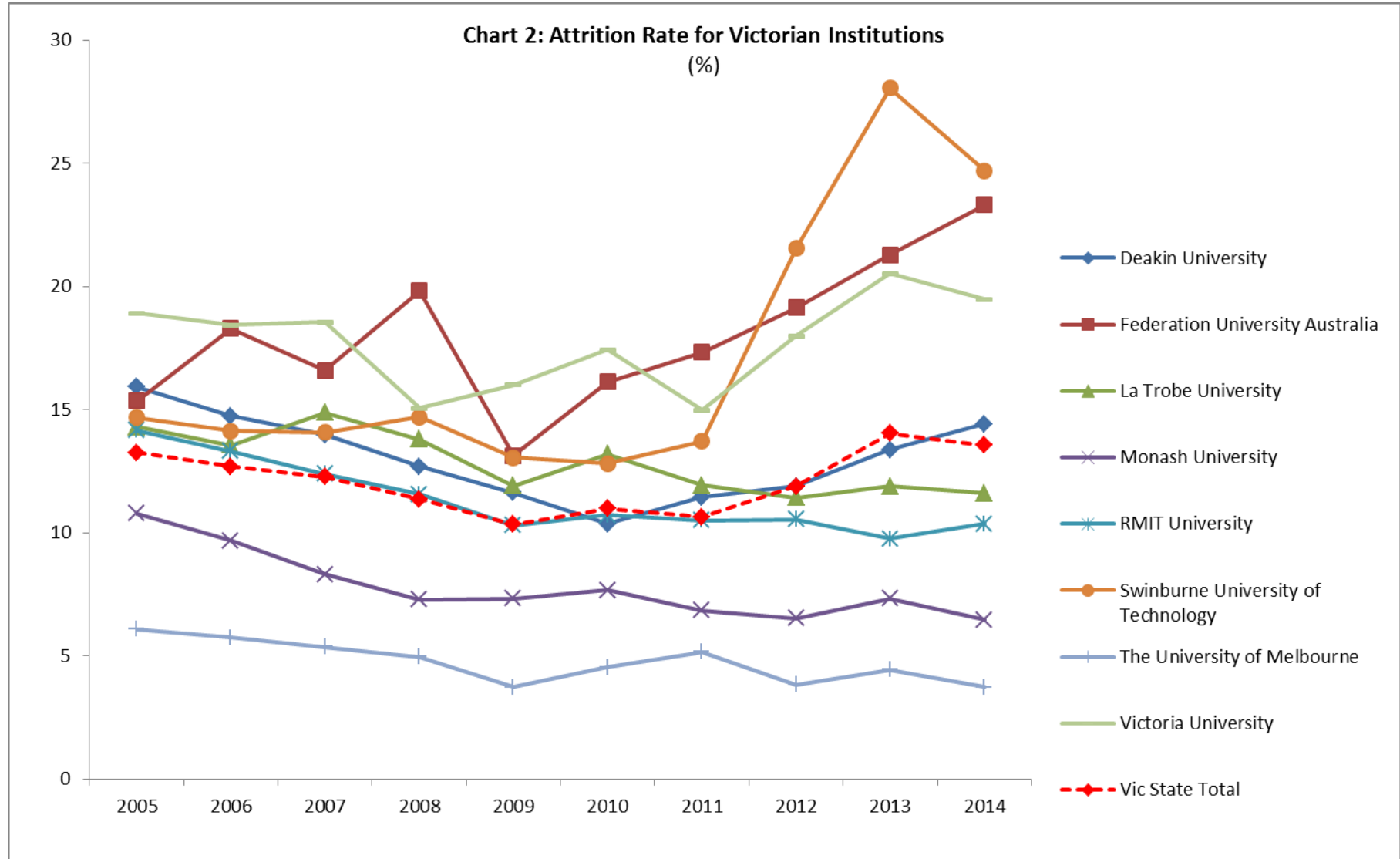
Contents

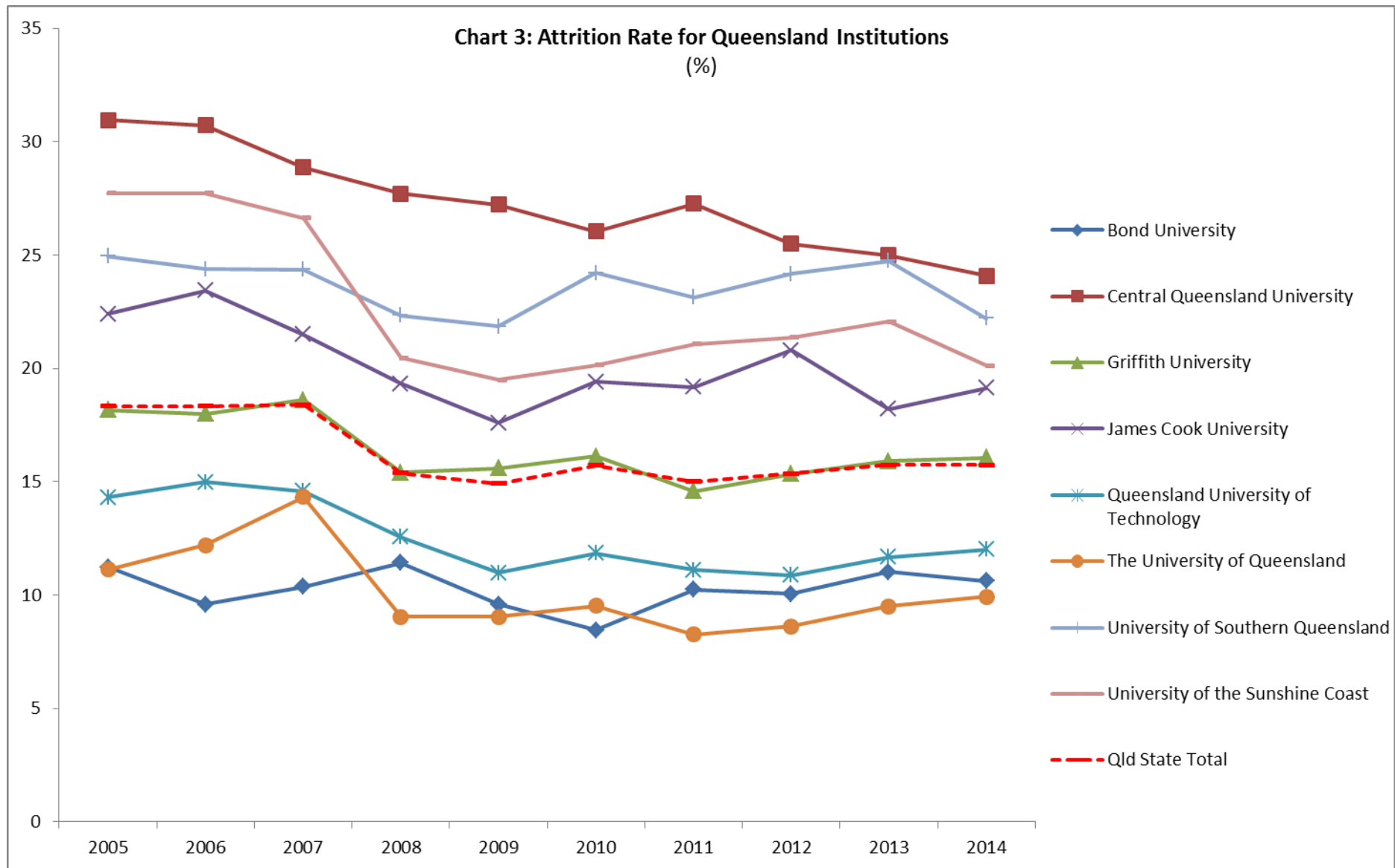
Attrition Rate by Institution	3
Success Rate by Institution	11
Retention Rate by Institution	19
Student Experience Survey: Reasons for Departure	27
Commencing Students by Age	28
Attrition Rate by Age	29
Commencements by Mode of Attendance and Institution	30
Attrition Rates by Mode of Attendance and Institution	35
Commencements by Field of Education: number of students	40
Correlation of FOE and Attrition Rate	41
Attrition Rates by FOE	42
Socioeconomic Status Attrition Rate by Provider	43
Cohort Analysis	46

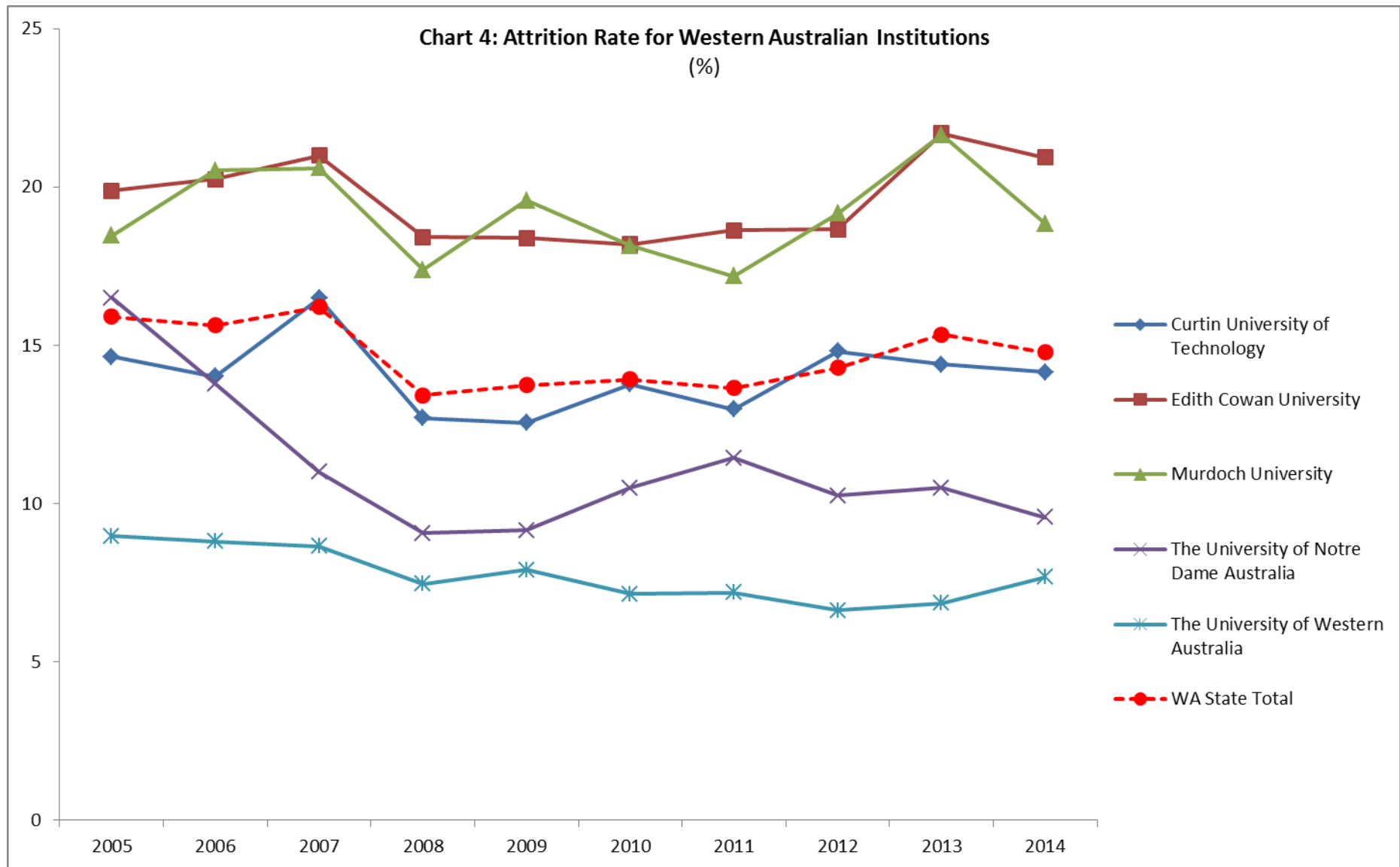
Attrition Rate by Institution

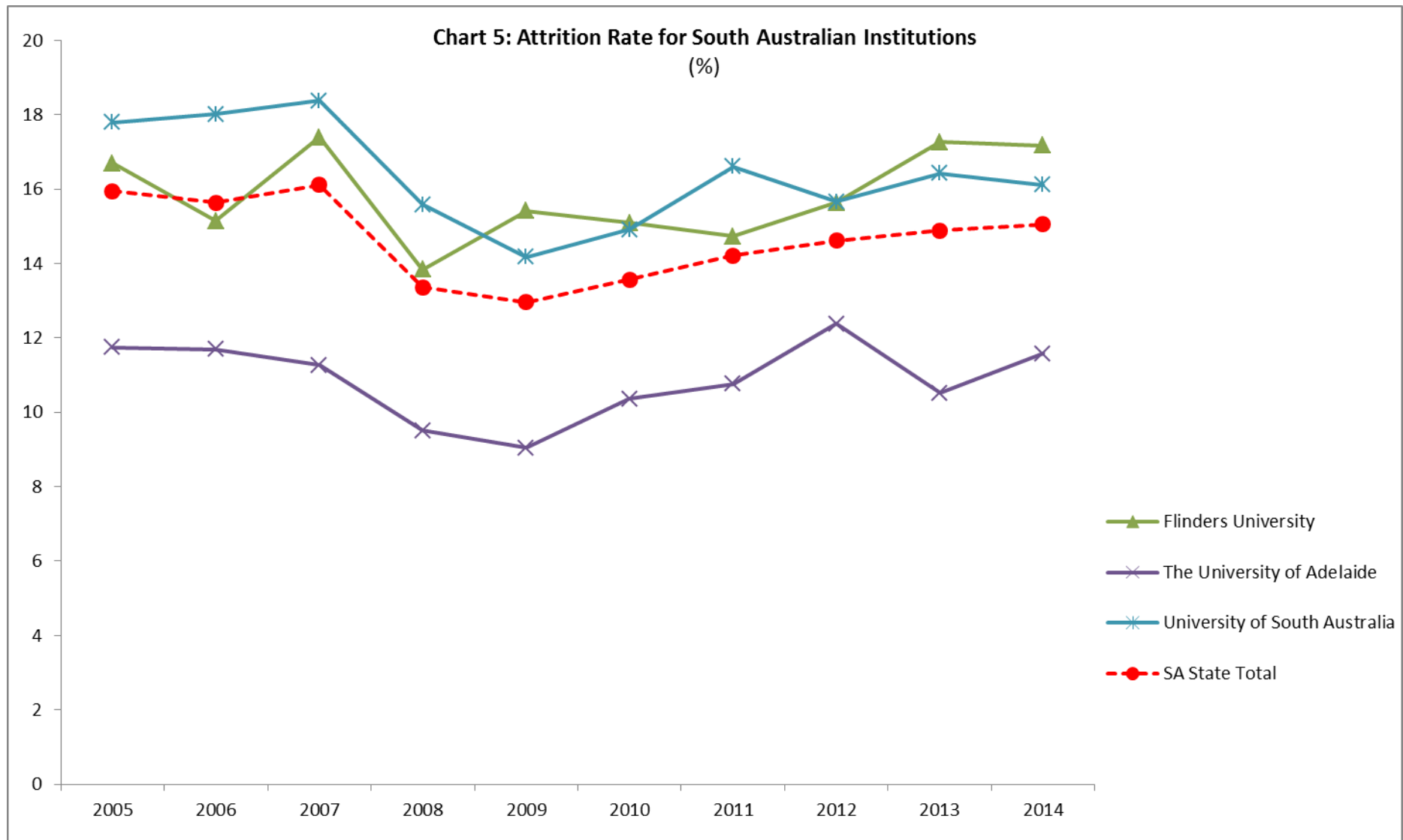
(Table A and B)











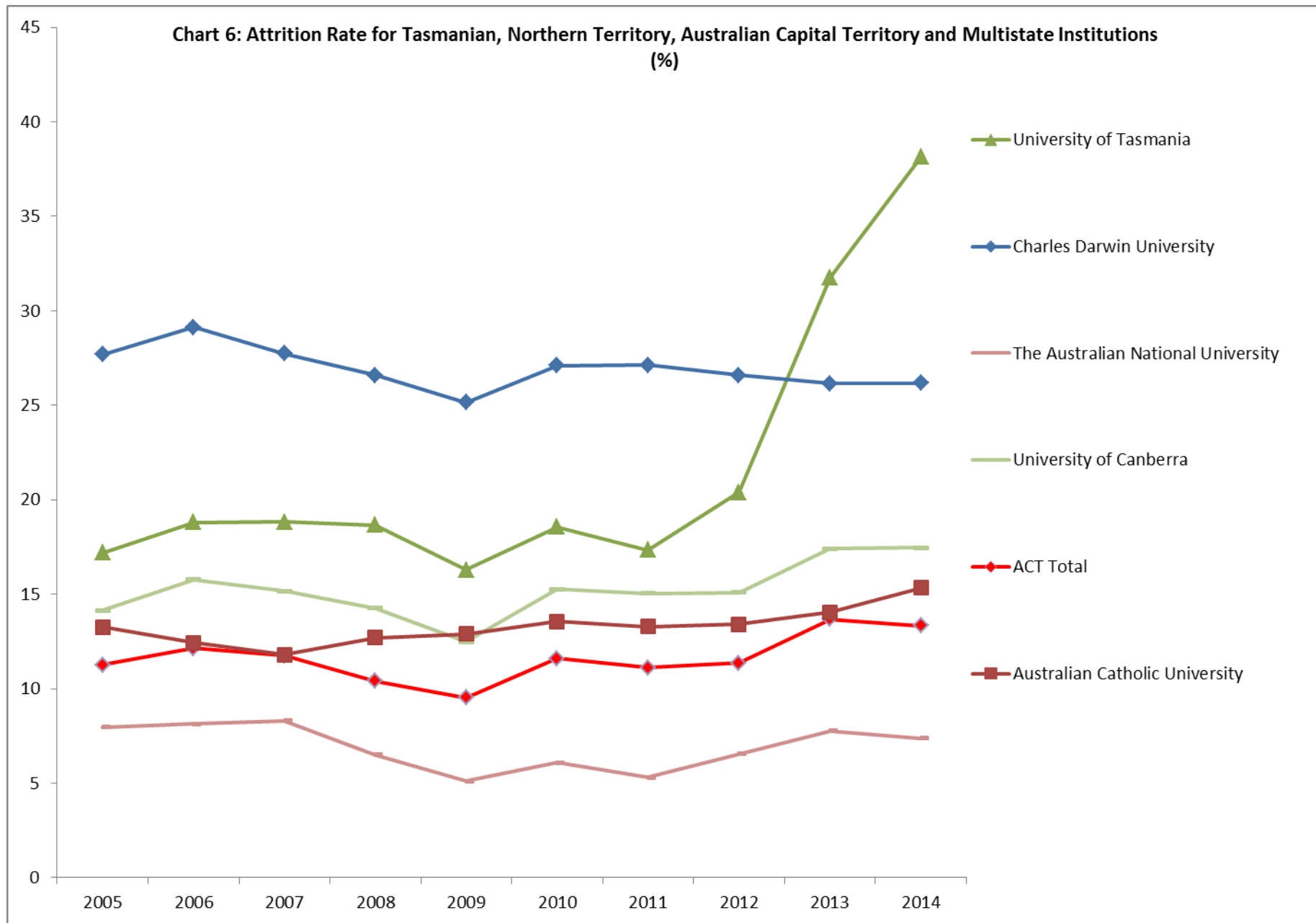
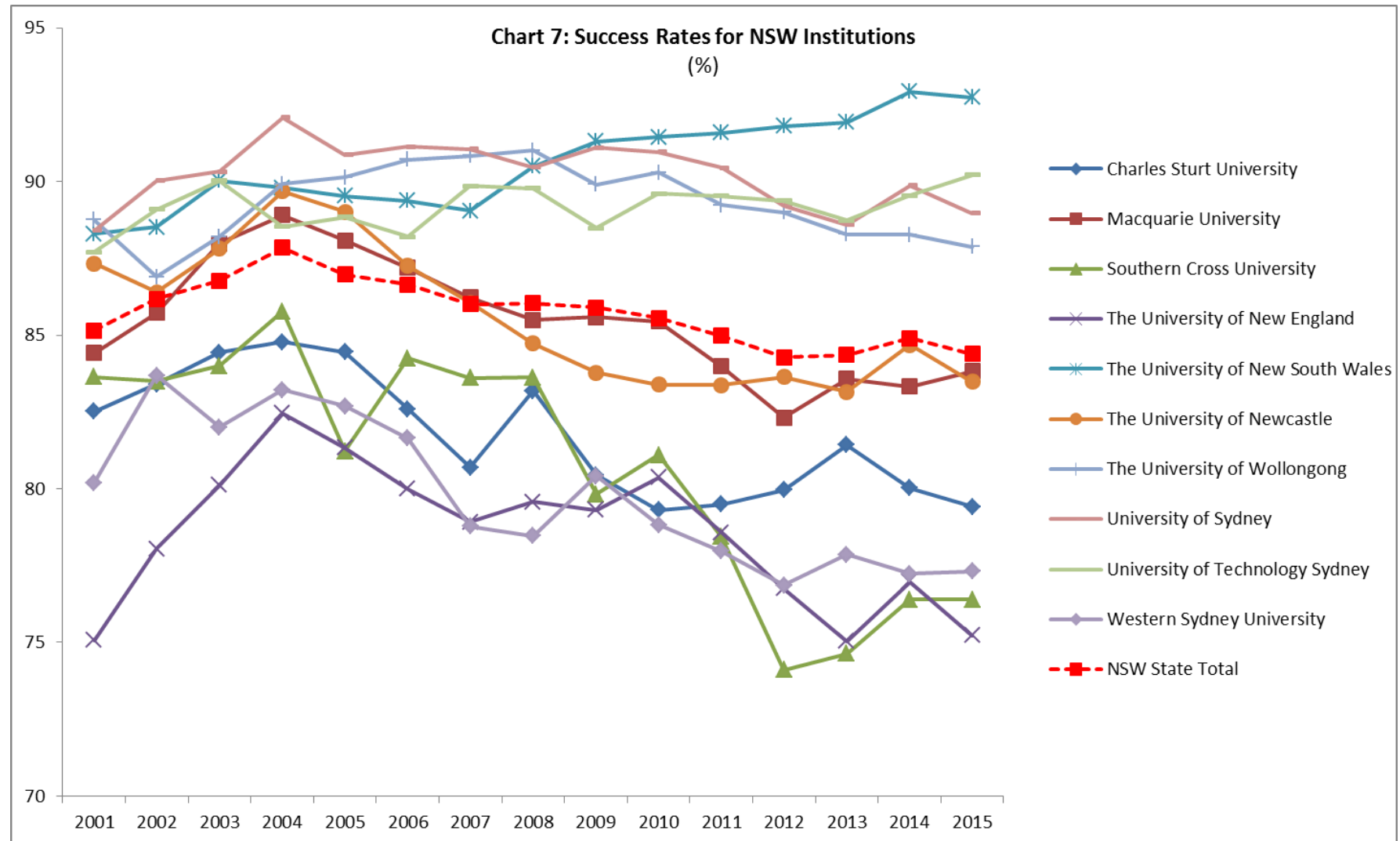


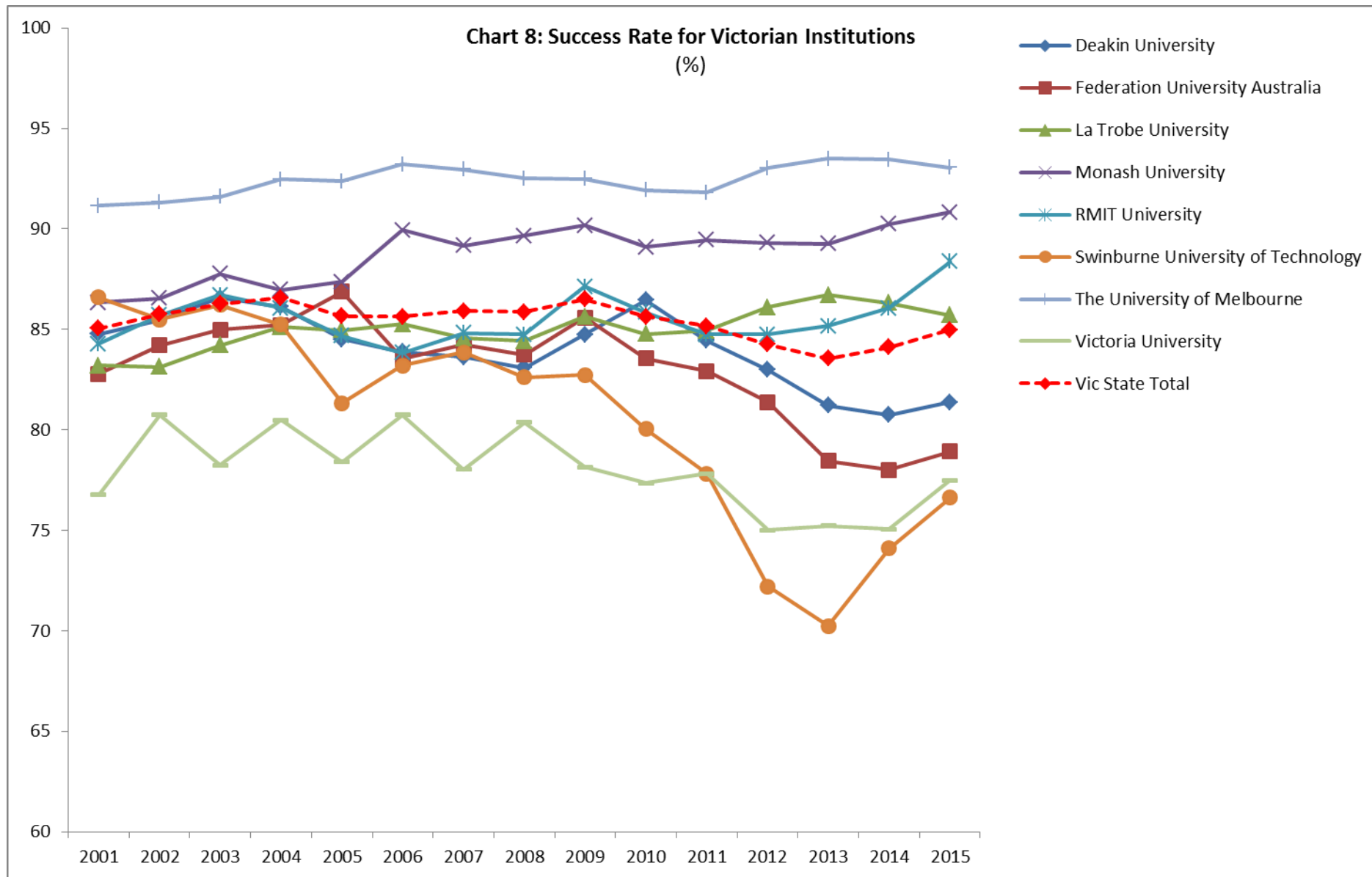
Table 1: Attrition Rates by State and Higher Education Institution (%)	2005	2006	2007	2008	2009	2010	2011	2012	2013	2014
National Total	15.04	14.62	14.76	12.77	12.48	13.09	12.79	13.43	14.79	15.18
Charles Sturt University	19.88	21.18	22.24	19.26	19.53	20.85	20.46	20.34	21.79	23.21
Macquarie University	10.91	9.52	9.19	8.97	8.61	9.63	9.01	10.16	9.49	9.77
Southern Cross University	26.68	24.78	24.92	22.39	23.38	20.94	22.25	24.12	23.49	24.54
The University of New England	24.67	24.16	22.22	19.60	20.49	20.24	20.52	21.62	22.04	22.89
The University of New South Wales	8.14	7.11	6.42	5.81	5.24	5.64	5.23	4.85	5.38	4.80
The University of Newcastle	12.75	12.55	14.27	11.79	13.64	13.33	13.75	13.72	14.51	14.60
The University of Wollongong	10.41	10.44	9.97	8.00	8.42	9.37	9.75	9.57	10.56	10.69
University of Sydney	6.91	6.47	6.72	5.57	5.91	5.47	5.33	5.46	6.09	5.93
University of Technology Sydney	8.21	8.00	8.91	6.31	7.33	7.46	7.45	7.47	8.30	7.74
Western Sydney University	13.67	12.04	13.53	11.39	11.15	11.39	11.88	12.73	12.48	14.11
NSW Total	13.40	12.56	13.03	11.03	11.36	11.70	11.63	11.92	12.35	12.72
Deakin University	15.93	14.73	13.98	12.69	11.62	10.37	11.45	11.89	13.37	14.42
Federation University Australia	15.35	18.29	16.58	19.82	13.13	16.12	17.33	19.13	21.29	23.31
La Trobe University	14.30	13.56	14.87	13.80	11.91	13.19	11.93	11.43	11.88	11.61
Monash University	10.78	9.68	8.32	7.28	7.33	7.67	6.85	6.52	7.32	6.46
RMIT University	14.15	13.31	12.38	11.56	10.30	10.72	10.50	10.55	9.76	10.36
Swinburne University of Technology	14.67	14.13	14.08	14.69	13.06	12.80	13.72	21.55	28.05	24.70
The University of Melbourne	6.09	5.74	5.36	4.96	3.74	4.53	5.16	3.83	4.44	3.74
University of Divinity	27.16	43.18	49.25	36.46	23.47	27.38	30.95	22.61	24.10	17.53
Victoria University	18.92	18.43	18.56	15.05	16.00	17.42	14.98	17.99	20.51	19.48
Victoria Total	13.25	12.69	12.26	11.36	10.34	10.99	10.65	11.89	14.03	13.56

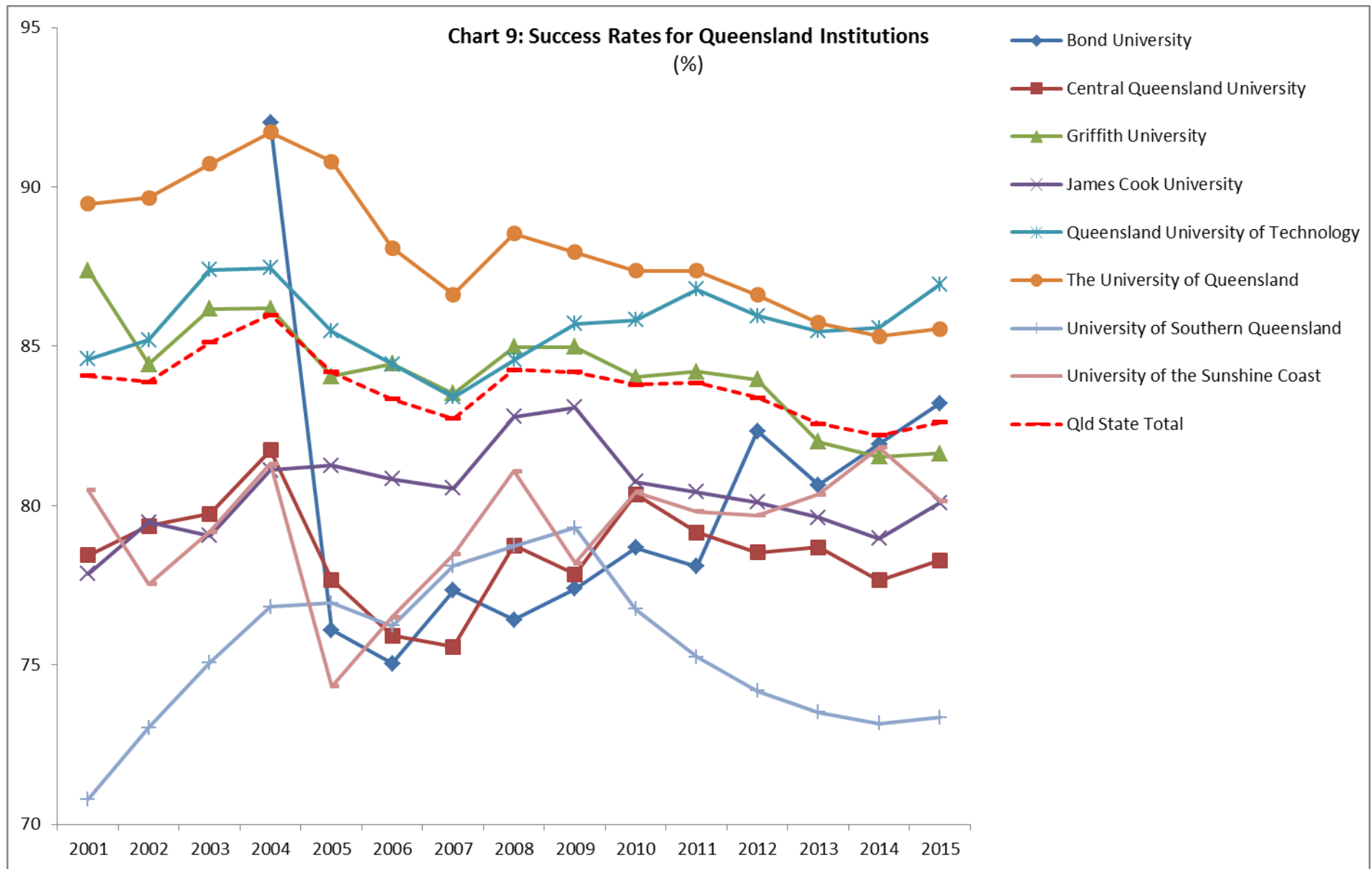
Table 2: Attrition Rates by State and Higher Education Institution (%)	2005	2006	2007	2008	2009	2010	2011	2012	2013	2014
Bond University	11.24	9.59	10.37	11.43	9.58	8.45	10.25	10.06	11.02	10.62
Central Queensland University	30.95	30.71	28.87	27.70	27.23	26.04	27.26	25.50	24.99	24.09
Griffith University	18.17	18.00	18.61	15.40	15.59	16.12	14.59	15.34	15.90	16.05
James Cook University	22.39	23.42	21.50	19.33	17.59	19.41	19.17	20.79	18.21	19.13
Queensland University of Technology	14.31	14.99	14.58	12.56	10.98	11.84	11.11	10.88	11.68	12.01
The University of Queensland	11.12	12.20	14.32	9.04	9.05	9.53	8.27	8.62	9.50	9.92
University of Southern Queensland	24.95	24.37	24.35	22.34	21.84	24.20	23.13	24.16	24.73	22.20
University of the Sunshine Coast	27.73	27.73	26.63	20.46	19.50	20.14	21.07	21.37	22.05	20.12
Queensland Total	18.34	18.33	18.40	15.39	14.91	15.71	15.01	15.37	15.75	15.74
Curtin University of Technology	14.64	14.01	16.48	12.70	12.55	13.77	12.98	14.80	14.40	14.15
Edith Cowan University	19.88	20.24	20.99	18.41	18.38	18.18	18.63	18.66	21.69	20.93
Murdoch University	18.46	20.52	20.59	17.38	19.58	18.14	17.18	19.16	21.65	18.85
The University of Notre Dame Australia	16.50	13.78	10.99	9.06	9.16	10.49	11.44	10.25	10.50	9.57
The University of Western Australia	8.97	8.81	8.65	7.46	7.91	7.15	7.19	6.62	6.85	7.67
Western Australia Total	15.90	15.63	16.20	13.42	13.74	13.92	13.65	14.29	15.34	14.78
Flinders University	16.70	15.15	17.40	13.84	15.42	15.09	14.73	15.64	17.26	17.18
The University of Adelaide	11.74	11.69	11.27	9.51	9.04	10.36	10.76	12.38	10.52	11.58
University of South Australia	17.79	18.02	18.38	15.58	14.18	14.91	16.61	15.66	16.42	16.11
South Australia Total	15.95	15.63	16.12	13.36	12.96	13.57	14.22	14.62	14.89	15.05
University of Tasmania	17.19	18.81	18.83	18.66	16.30	18.55	17.33	20.39	31.77	38.13
Tasmania Total	17.20	18.63	19.30	18.66	16.30	18.55	17.33	20.39	31.77	38.13
Northern Territory - Charles Darwin University	27.69	29.14	27.74	26.58	25.14	27.10	27.13	26.58	26.16	26.17
The Australian National University	7.97	8.13	8.31	6.50	5.10	6.08	5.31	6.56	7.78	7.37
University of Canberra	14.15	15.77	15.16	14.26	12.48	15.27	15.05	15.09	17.41	17.47
Australian Capital Territory Total	11.27	12.15	11.74	10.41	9.53	11.59	11.12	11.36	13.67	13.34
Multi-State - Australian Catholic University	13.26	12.43	11.79	12.69	12.89	13.55	13.28	13.41	14.04	15.34

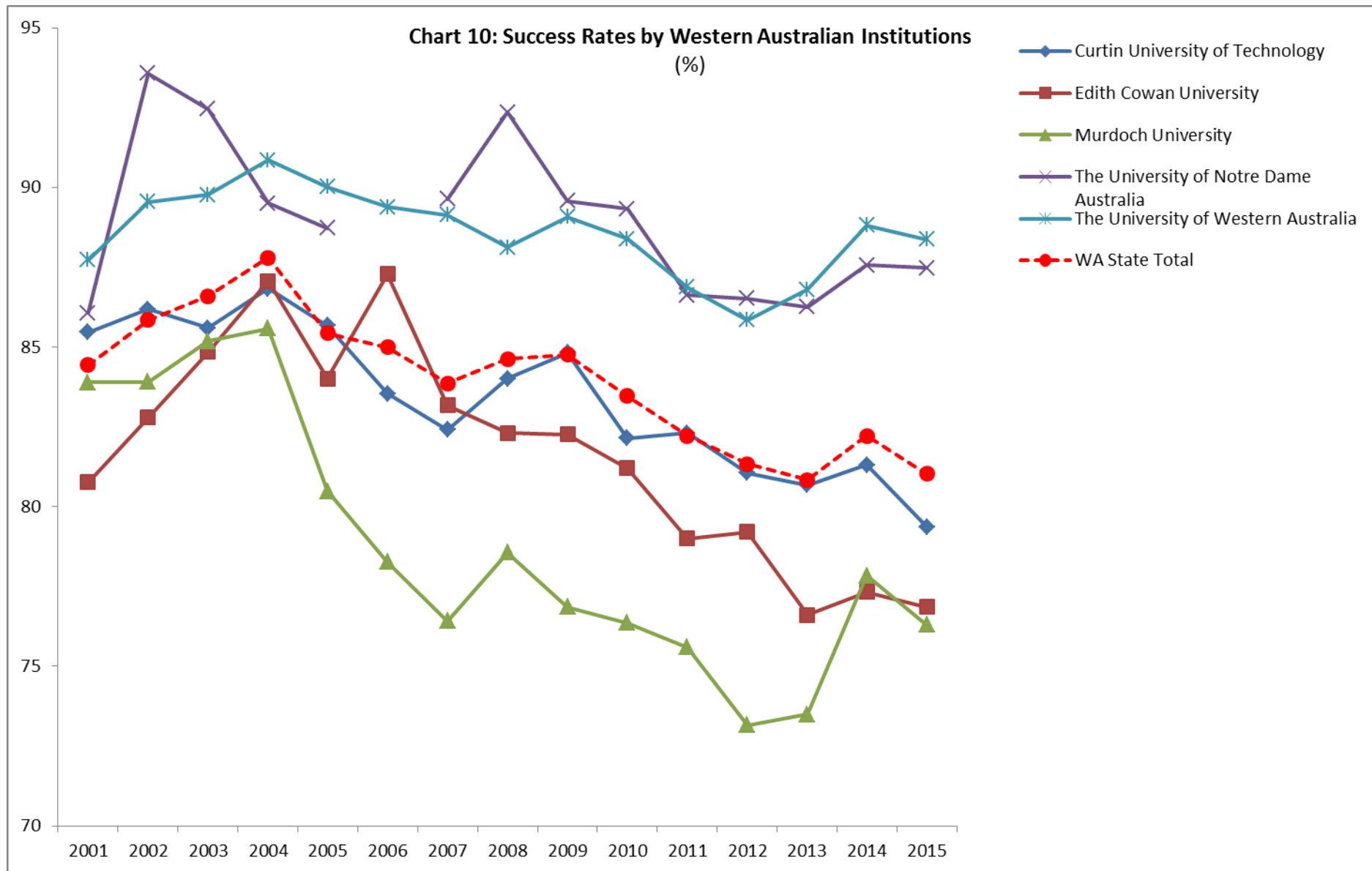
Success Rate by Institution

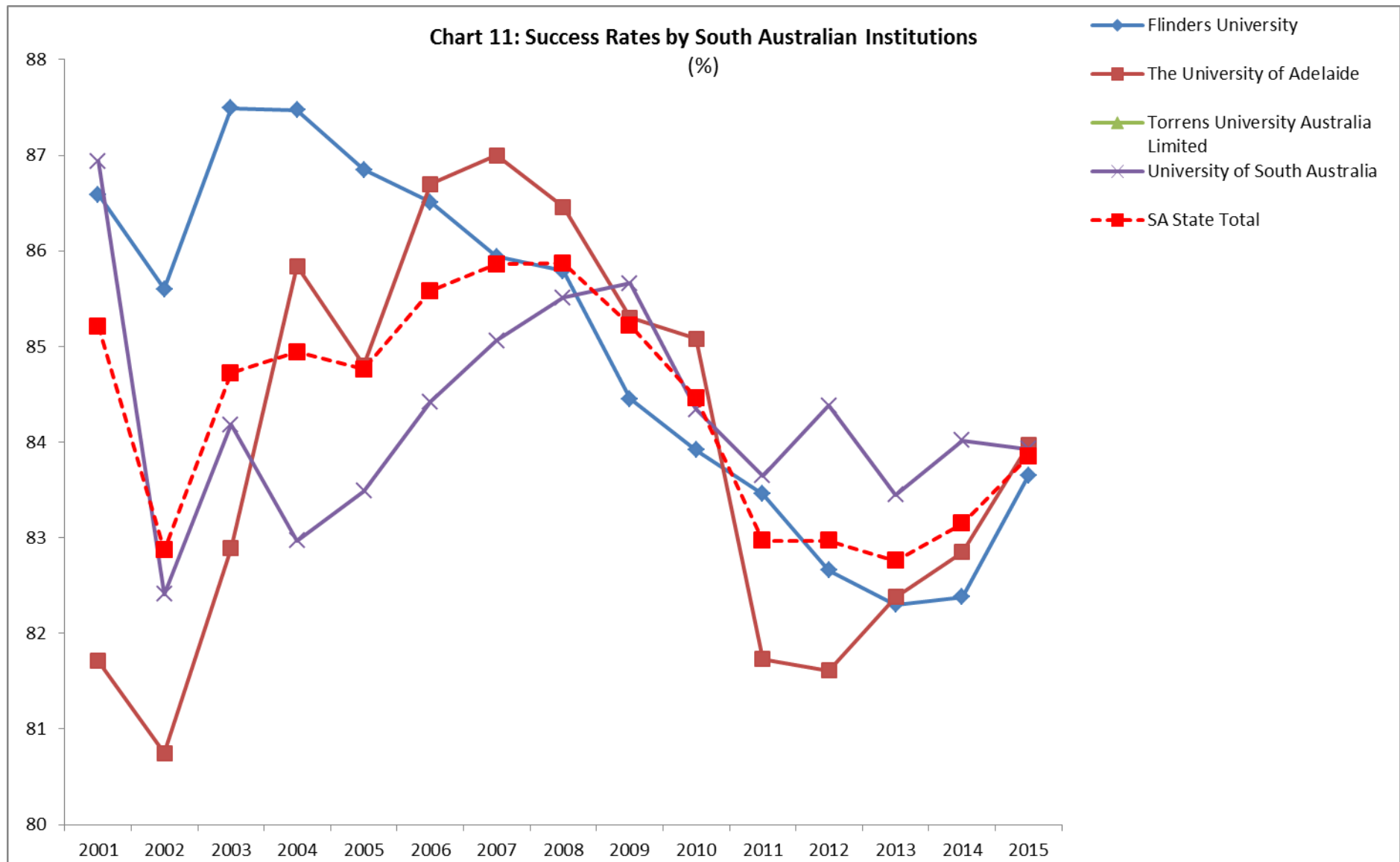
(Table A and B)











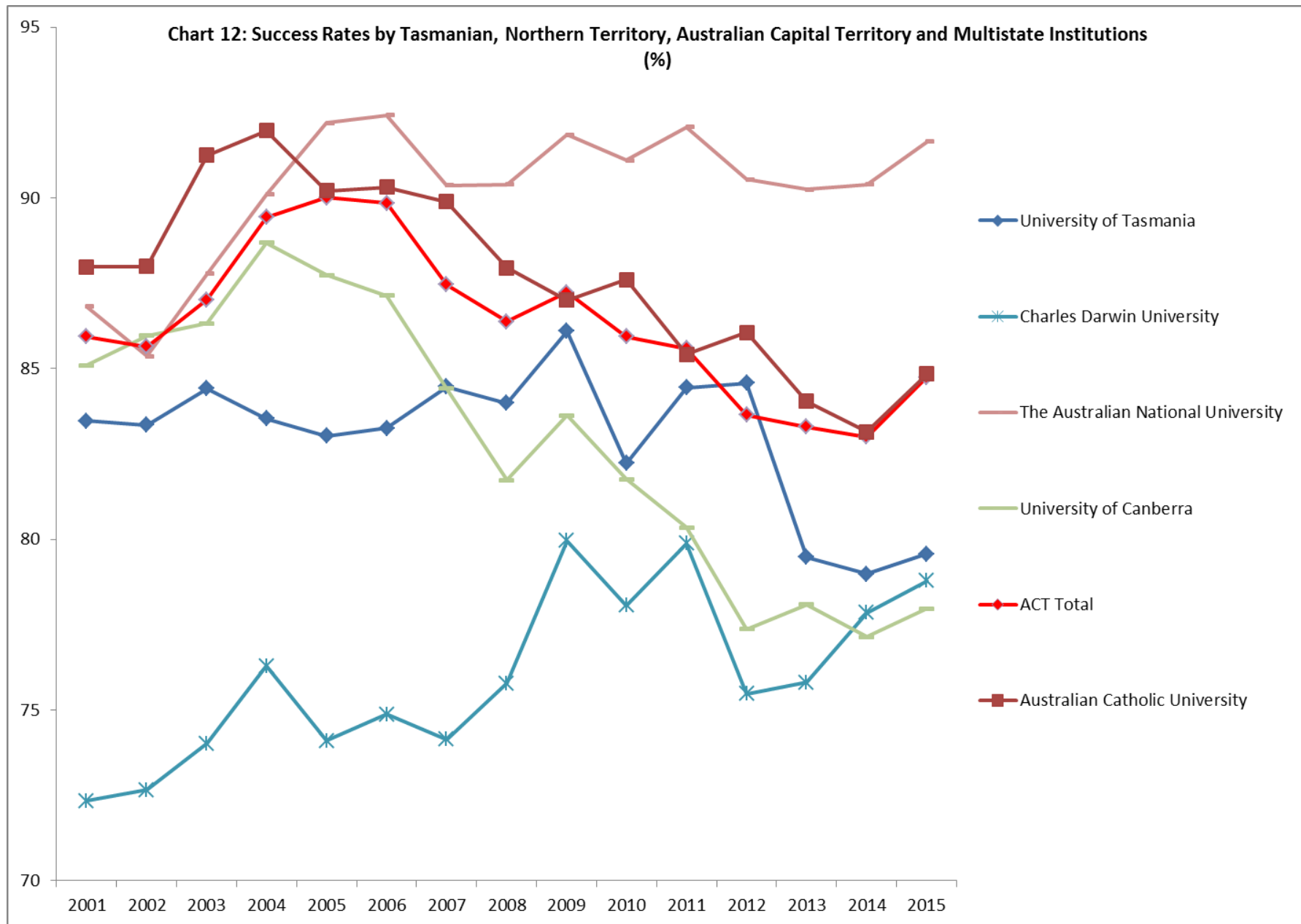
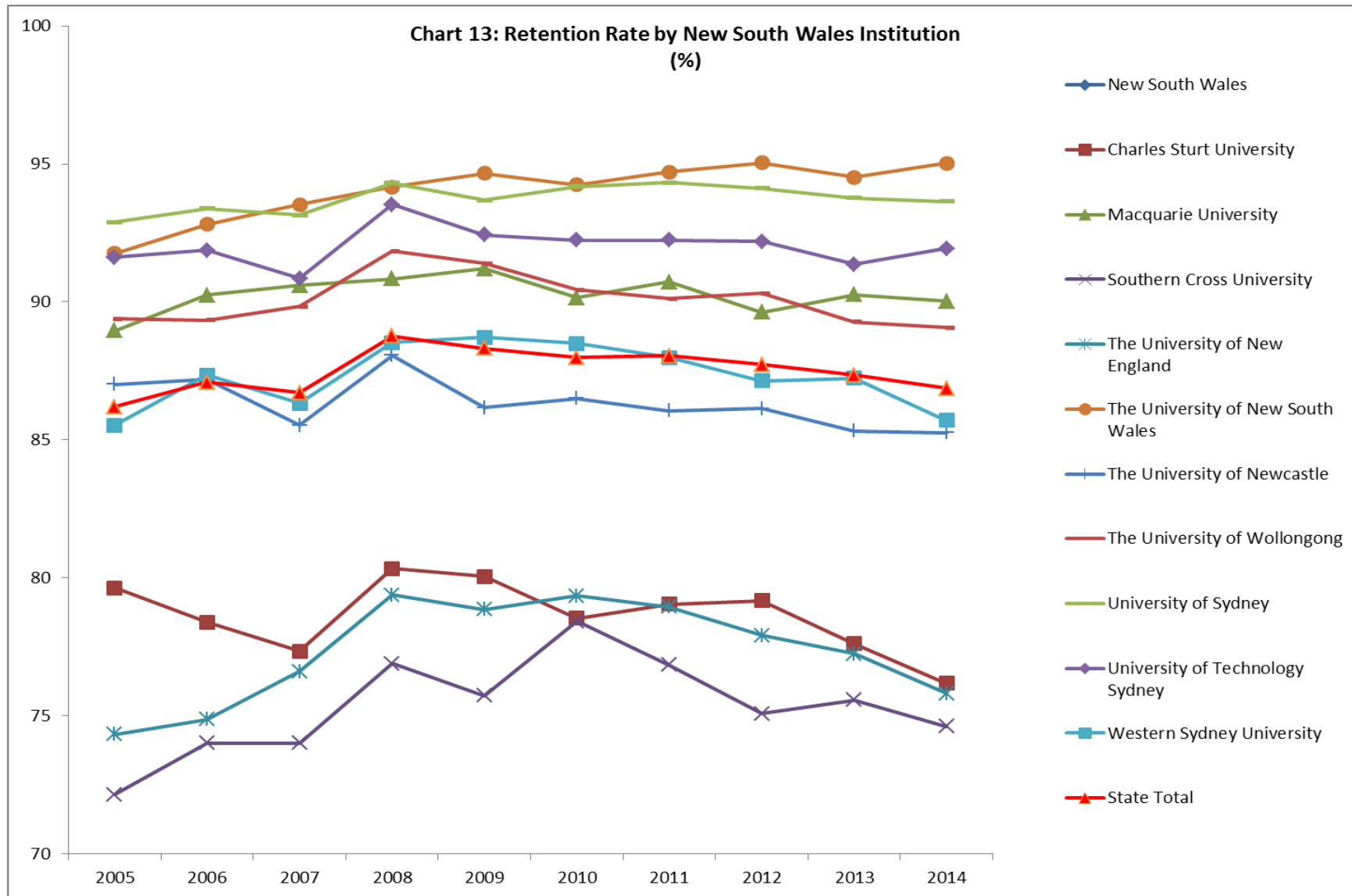


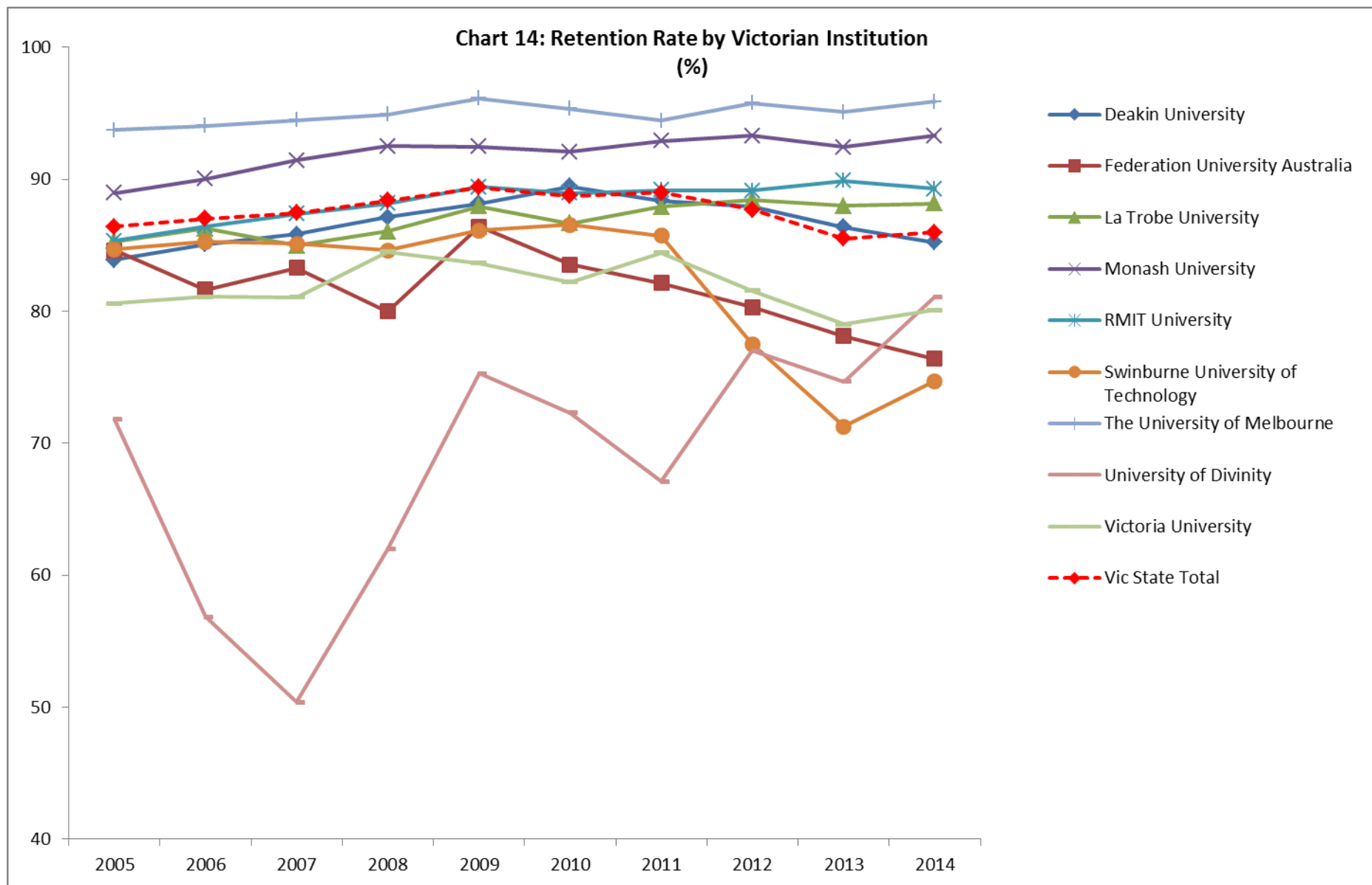
Table 3: Success rates by State and Higher Education Institution (%)	2001	2002	2003	2004	2005	2006	2007	2008	2009	2010	2011	2012	2013	2014	2015
National Total	84.77	85.16	86.09	86.85	85.71	85.46	85.07	85.39	85.53	84.85	84.34	83.67	83.11	83.48	83.72
Charles Sturt University	82.51	83.41	84.43	84.78	84.45	82.59	80.69	83.19	80.45	79.31	79.50	79.96	81.42	80.03	79.42
Macquarie University	84.41	85.72	87.98	88.90	88.08	87.19	86.22	85.49	85.59	85.44	83.98	82.32	83.57	83.32	83.82
Southern Cross University	83.64	83.50	84.00	85.78	81.23	84.25	83.60	83.63	79.82	81.10	78.43	74.10	74.63	76.39	76.39
The University of New England	75.07	78.05	80.11	82.45	81.33	80.00	78.92	79.57	79.31	80.36	78.57	76.75	75.04	76.97	75.22
The University of New South Wales	88.30	88.51	90.03	89.79	89.53	89.37	89.05	90.49	91.30	91.44	91.59	91.81	91.93	92.92	92.73
The University of Newcastle	87.33	86.40	87.82	89.68	89.01	87.25	86.06	84.73	83.78	83.39	83.38	83.64	83.15	84.68	83.48
The University of Wollongong	88.75	86.89	88.20	89.92	90.13	90.71	90.84	91.00	89.90	90.29	89.23	89.00	88.28	88.27	87.88
University of Sydney	88.41	90.02	90.32	92.08	90.87	91.13	91.05	90.46	91.10	90.96	90.44	89.21	88.59	89.87	88.97
University of Technology Sydney	87.71	89.09	90.03	88.53	88.84	88.20	89.85	89.77	88.49	89.60	89.53	89.37	88.74	89.55	90.22
Western Sydney University	80.19	83.68	82.00	83.22	82.69	81.65	78.78	78.46	80.42	78.82	77.96	76.86	77.85	77.24	77.32
NSW State Total	85.15	86.18	86.77	87.84	86.98	86.64	86.01	86.03	85.90	85.55	84.98	84.27	84.35	84.90	84.39
Deakin University	84.77	85.47	86.56	86.13	84.51	83.87	83.61	83.08	84.75	86.46	84.45	83.00	81.20	80.74	81.38
Federation University Australia	82.77	84.21	84.97	85.20	86.87	83.53	84.22	83.74	85.58	83.54	82.91	81.38	78.45	78.01	78.92
La Trobe University	83.19	83.12	84.20	85.11	84.96	85.26	84.55	84.42	85.64	84.77	84.93	86.11	86.71	86.30	85.70
Monash University	86.34	86.55	87.75	86.97	87.37	89.93	89.17	89.66	90.16	89.10	89.44	89.30	89.26	90.23	90.82
RMIT University	84.27	85.70	86.71	86.06	84.68	83.84	84.82	84.75	87.12	85.85	84.74	84.75	85.17	86.05	88.37
Swinburne University of Technology	86.58	85.49	86.21	85.23	81.33	83.20	83.86	82.62	82.74	80.05	77.83	72.20	70.23	74.09	76.63
The University of Melbourne	91.15	91.31	91.59	92.47	92.38	93.21	92.95	92.50	92.48	91.92	91.80	93.02	93.49	93.44	93.05
University of Divinity	(g)	(g)	(g)	(g)	89.75	82.35	87.22	86.53	89.58	88.16	87.66	89.77	93.76	92.44	95.51
Victoria University	76.76	80.75	78.25	80.48	78.41	80.74	78.03	80.38	78.15	77.36	77.83	75.00	75.23	75.07	77.49
Victorian State Total	85.04	85.76	86.26	86.57	85.66	85.62	85.91	85.87	86.49	85.64	85.16	84.26	83.54	84.12	84.98

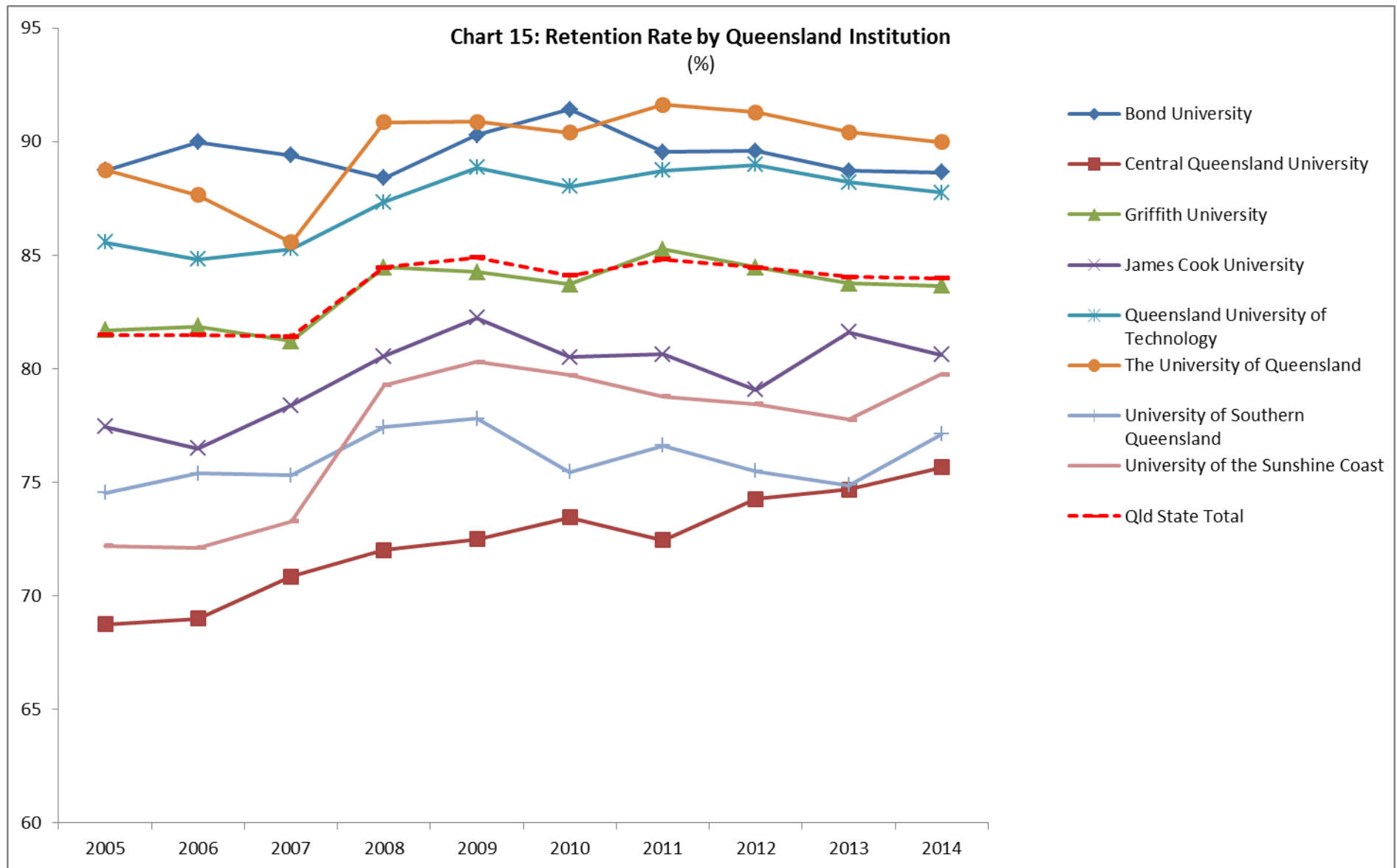
Table 4: Success rates by State and Higher Education Institution (%)	2001	2002	2003	2004	2005	2006	2007	2008	2009	2010	2011	2012	2013	2014	2015
Bond University				92.00	76.10	75.05	77.33	76.42	77.39	78.67	78.09	82.34	80.64	81.93	83.21
Central Queensland University	78.45	79.36	79.74	81.74	77.67	75.92	75.57	78.75	77.85	80.36	79.16	78.53	78.69	77.65	78.28
Griffith University	87.38	84.44	86.18	86.19	84.06	84.45	83.52	84.98	84.98	84.03	84.21	83.95	82.00	81.54	81.64
James Cook University	77.86	79.48	79.06	81.11	81.26	80.84	80.55	82.79	83.08	80.75	80.42	80.10	79.62	78.97	80.09
Queensland University of Technology	84.60	85.20	87.40	87.45	85.47	84.44	83.40	84.57	85.71	85.82	86.79	85.96	85.47	85.58	86.95
The University of Queensland	89.47	89.66	90.73	91.71	90.79	88.08	86.63	88.53	87.95	87.37	87.37	86.61	85.73	85.31	85.55
University of Southern Queensland	70.78	73.03	75.07	76.82	76.94	76.23	78.11	78.74	79.30	76.75	75.25	74.19	73.52	73.16	73.36
University of the Sunshine Coast	80.48	77.54	79.18	81.31	74.33	76.50	78.47	81.09	78.19	80.43	79.82	79.70	80.36	81.83	80.15
Queensland State Total	84.07	83.88	85.13	85.98	84.19	83.34	82.73	84.26	84.19	83.80	83.85	83.39	82.57	82.21	82.62
Curtin University of Technology	85.47	86.18	85.60	86.83	85.67	83.54	82.41	84.01	84.82	82.14	82.31	81.05	80.67	81.31	79.36
Edith Cowan University	80.76	82.79	84.84	87.07	84.01	87.28	83.17	82.31	82.26	81.20	79.00	79.21	76.61	77.32	76.86
Murdoch University	83.89	83.90	85.19	85.58	80.49	78.26	76.42	78.56	76.85	76.35	75.59	73.16	73.49	77.84	76.30
The University of Notre Dame Australia	86.07	93.57	92.46	89.50	88.73		89.63	92.35	89.57	89.33	86.62	86.52	86.25	87.56	87.47
The University of Western Australia	87.73	89.55	89.76	90.85	90.02	89.38	89.13	88.12	89.07	88.39	86.88	85.84	86.80	88.81	88.37
West Australia State Total	84.44	85.85	86.59	87.80	85.43	84.99	83.86	84.63	84.76	83.46	82.21	81.34	80.83	82.22	81.03
Flinders University	86.59	85.60	87.49	87.47	86.85	86.51	85.94	85.79	84.45	83.92	83.46	82.66	82.30	82.38	83.65
The University of Adelaide	81.71	80.75	82.89	85.84	84.80	86.70	87.00	86.46	85.30	85.08	81.73	81.61	82.38	82.85	83.97
Torrens University Australia Limited															78.22
University of South Australia	86.94	82.41	84.18	82.97	83.49	84.42	85.06	85.51	85.66	84.34	83.65	84.38	83.45	84.02	83.93
South Australia State Total	85.21	82.87	84.72	84.94	84.76	85.58	85.86	85.87	85.22	84.46	82.97	82.97	82.76	83.15	83.85
University of Tasmania	83.47	83.35	84.41	83.53	83.03	83.25	84.46	83.98	86.10	82.22	84.44	84.57	79.48	78.98	79.57
Charles Darwin University	72.34	72.65	74.01	76.29	74.09	74.87	74.14	75.78	79.95	78.06	79.88	75.47	75.81	77.85	78.78
The Australian National University	86.81	85.36	87.77	90.10	92.20	92.42	90.37	90.39	91.85	91.10	92.07	90.54	90.25	90.39	91.65
University of Canberra	85.09	85.96	86.32	88.69	87.74	87.14	84.41	81.73	83.63	81.76	80.34	77.36	78.09	77.14	77.96
Australian Capital Territory Total	85.94	85.64	87.02	89.43	90.00	89.84	87.45	86.38	87.23	85.93	85.59	83.64	83.29	83.00	84.75
Australian Catholic University	87.98	87.99	91.25	91.97	90.20	90.31	89.88	87.95	87.00	87.60	85.41	86.06	84.04	83.15	84.84

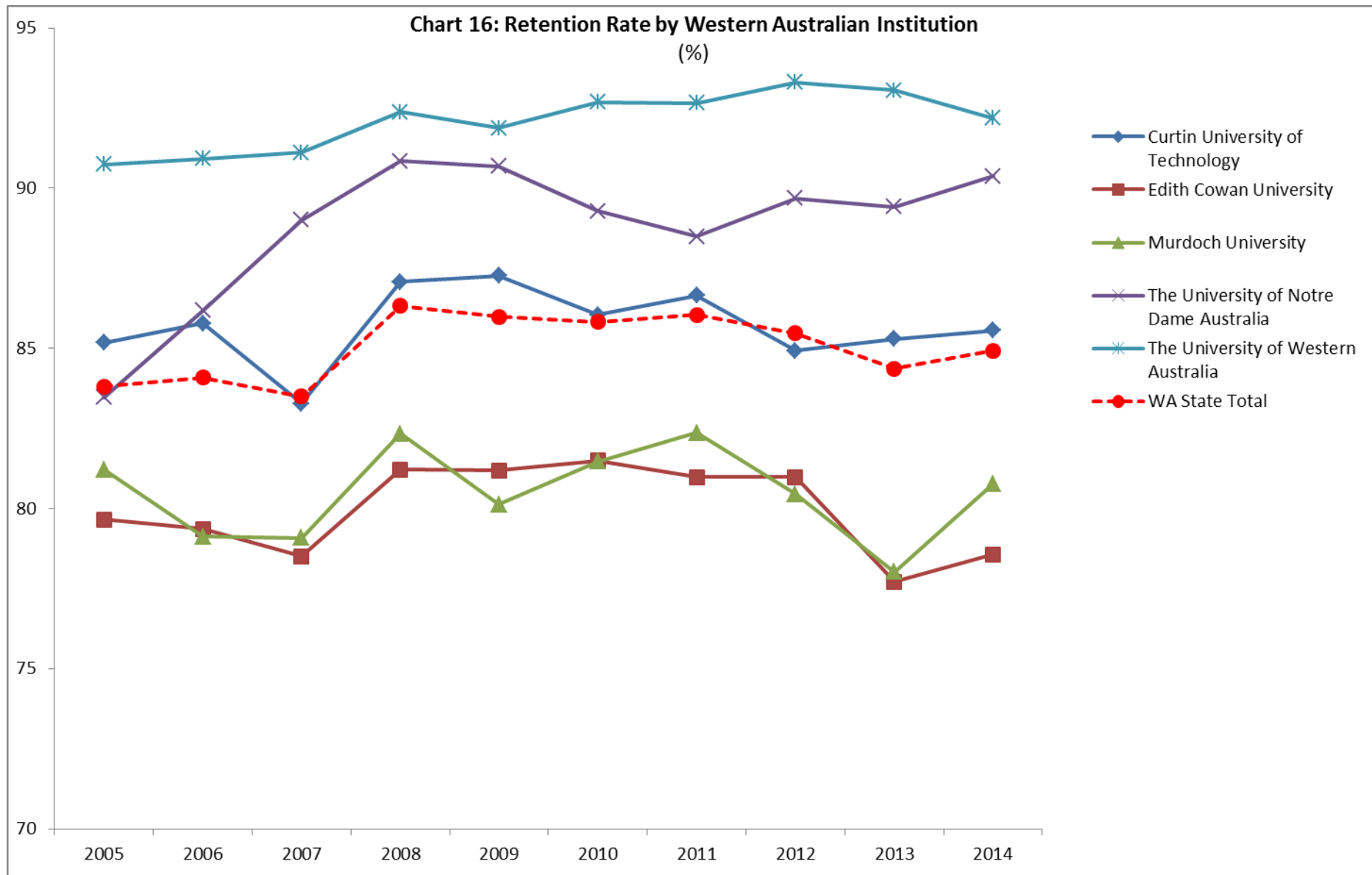
Retention Rate by Institution

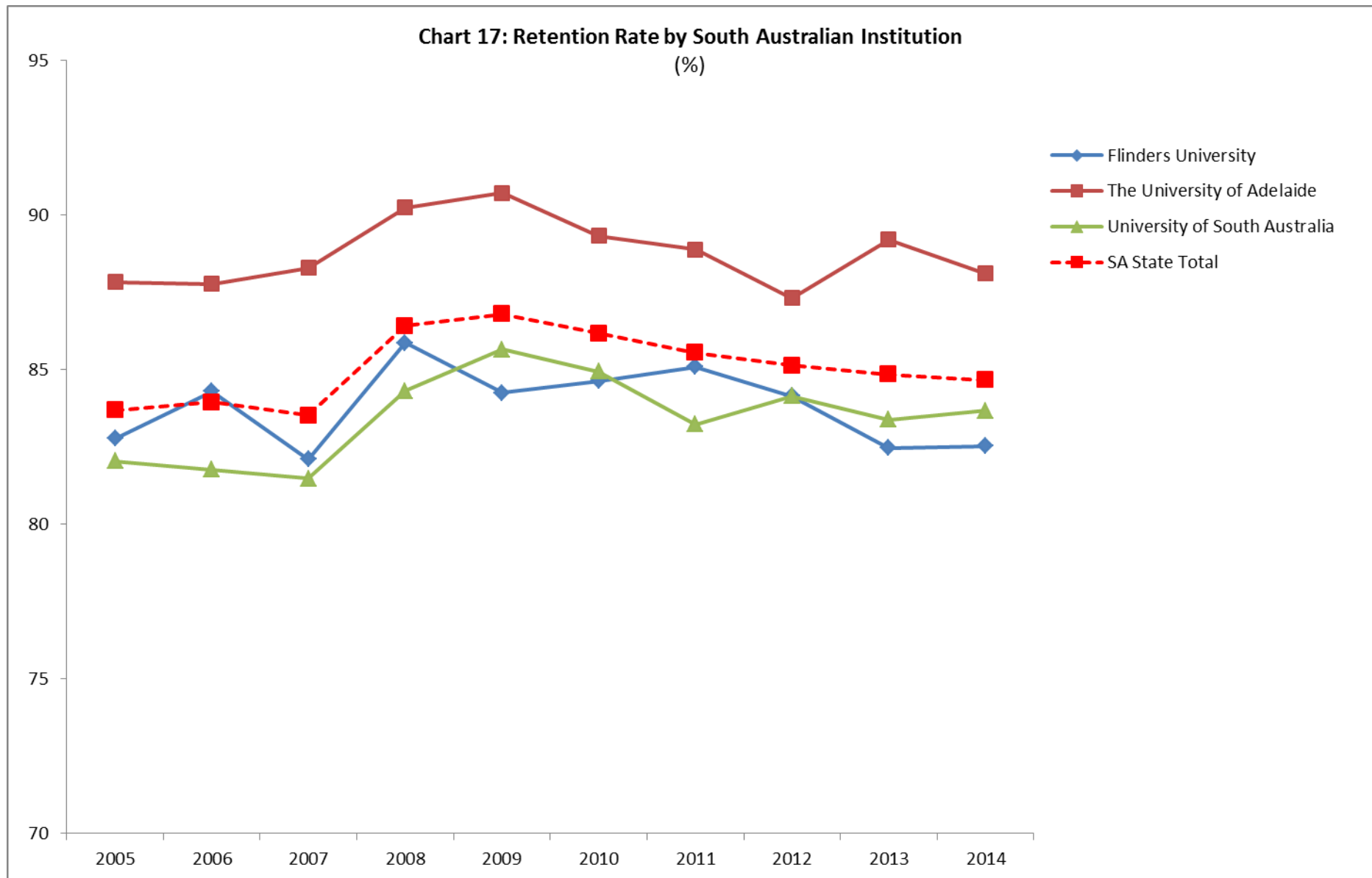
(Table A and B)











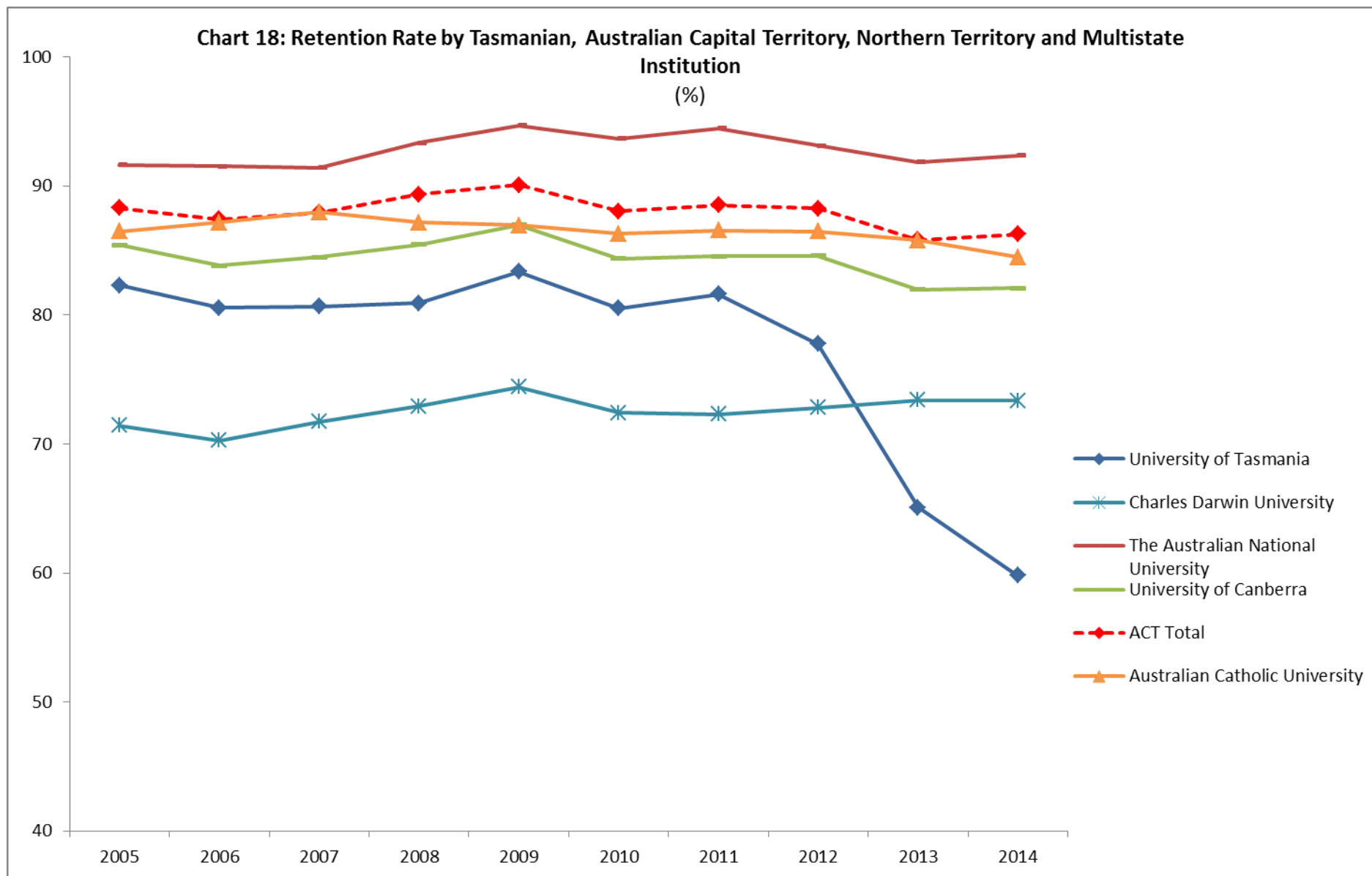


Table 5: Retention Rate by State and Higher Education Institution (%)	2005	2006	2007	2008	2009	2010	2011	2012	2013	2014
National Total	84.60	85.05	84.97	87.00	87.23	86.62	86.89	86.23	84.83	84.41
Charles Sturt University	79.63	78.39	77.34	80.34	80.05	78.53	79.04	79.17	77.61	76.18
Macquarie University	88.95	90.25	90.59	90.83	91.20	90.15	90.73	89.62	90.26	90.02
Southern Cross University	72.14	74.00	74.01	76.89	75.73	78.42	76.85	75.07	75.57	74.61
The University of New England	74.32	74.86	76.61	79.38	78.85	79.35	78.95	77.91	77.24	75.80
The University of New South Wales	91.76	92.81	93.53	94.16	94.66	94.24	94.70	95.04	94.52	95.02
The University of Newcastle	87.01	87.20	85.53	88.06	86.16	86.50	86.05	86.13	85.32	85.26
The University of Wollongong	89.39	89.33	89.83	91.83	91.39	90.43	90.11	90.31	89.27	89.06
University of Sydney	92.89	93.38	93.14	94.31	93.69	94.18	94.32	94.11	93.76	93.64
University of Technology Sydney	91.61	91.87	90.85	93.53	92.42	92.23	92.23	92.19	91.36	91.94
Western Sydney University	85.52	87.34	86.33	88.52	88.71	88.49	87.98	87.13	87.23	85.70
New South Wales State Total	86.19	87.09	86.70	88.76	88.32	87.98	88.05	87.73	87.34	86.86
Deakin University	83.90	85.08	85.84	87.14	88.17	89.47	88.37	87.90	86.36	85.23
Federation University Australia	84.60	81.63	83.28	79.97	86.41	83.54	82.14	80.31	78.13	76.40
La Trobe University	85.31	86.26	84.97	86.04	87.96	86.65	87.92	88.46	87.97	88.18
Monash University	88.96	90.03	91.44	92.51	92.48	92.09	92.91	93.29	92.43	93.31
RMIT University	85.32	86.43	87.37	88.17	89.44	88.97	89.18	89.12	89.89	89.29
Swinburne University of Technology	84.69	85.27	85.11	84.60	86.11	86.54	85.71	77.52	71.27	74.71
The University of Melbourne	93.72	94.06	94.48	94.90	96.14	95.34	94.43	95.76	95.08	95.88
University of Divinity	71.79	56.82	50.38	61.96	75.27	72.29	67.09	76.99	74.68	81.11
Victoria University	80.58	81.09	81.05	84.52	83.64	82.21	84.43	81.56	79.02	80.10
Victoria State Total	86.40	87.01	87.46	88.37	89.39	88.73	88.99	87.70	85.50	85.99

Table 6: Retention Rate by State and Higher Education Institution (%)	2005	2006	2007	2008	2009	2010	2011	2012	2013	2014
Bond University	88.74	89.97	89.40	88.39	90.29	91.41	89.55	89.59	88.71	88.64
Central Queensland University	68.76	69.01	70.86	72.01	72.50	73.45	72.46	74.27	74.69	75.67
Griffith University	81.70	81.87	81.22	84.47	84.26	83.72	85.26	84.47	83.76	83.66
James Cook University	77.46	76.50	78.39	80.56	82.23	80.50	80.63	79.08	81.61	80.61
Queensland University of Technology	85.56	84.82	85.27	87.33	88.85	88.03	88.74	88.99	88.20	87.76
The University of Queensland	88.75	87.65	85.56	90.85	90.88	90.39	91.63	91.30	90.41	89.98
University of Southern Queensland	74.53	75.39	75.31	77.42	77.81	75.45	76.62	75.49	74.87	77.11
University of the Sunshine Coast	72.21	72.12	73.28	79.29	80.30	79.71	78.78	78.44	77.76	79.75
Queensland State Total	81.48	81.48	81.43	84.46	84.91	84.12	84.82	84.46	84.04	83.99
Curtin University of Technology	85.18	85.78	83.28	87.08	87.26	86.04	86.65	84.93	85.29	85.56
Edith Cowan University	79.66	79.36	78.51	81.21	81.18	81.49	80.98	80.98	77.71	78.56
Murdoch University	81.22	79.12	79.08	82.34	80.12	81.47	82.37	80.45	78.02	80.78
The University of Notre Dame Australia	83.47	86.17	89.00	90.85	90.68	89.29	88.49	89.68	89.42	90.38
The University of Western Australia	90.74	90.92	91.11	92.37	91.88	92.68	92.65	93.30	93.05	92.18
Western Australia State Total	83.80	84.08	83.50	86.33	85.99	85.82	86.04	85.47	84.37	84.93
Flinders University	82.77	84.30	82.10	85.87	84.25	84.64	85.09	84.15	82.47	82.53
The University of Adelaide	87.83	87.77	88.29	90.24	90.71	89.32	88.88	87.32	89.21	88.11
University of South Australia	82.04	81.76	81.47	84.31	85.66	84.93	83.23	84.14	83.38	83.67
South Australia State Total	83.69	83.95	83.52	86.42	86.80	86.17	85.54	85.14	84.85	84.67
University of Tasmania	82.29	80.57	80.67	80.93	83.35	80.51	81.61	77.75	65.08	59.79
Charles Darwin University	71.43	70.28	71.74	72.91	74.40	72.40	72.31	72.81	73.40	73.35
The Australian National University	91.65	91.51	91.43	93.33	94.69	93.66	94.46	93.14	91.87	92.35
University of Canberra	85.42	83.83	84.47	85.47	87.00	84.35	84.54	84.57	81.98	82.08
Australian Capital Territory Total	88.31	87.43	87.94	89.36	90.07	88.04	88.50	88.27	85.81	86.25
Australian Catholic University	86.46	87.17	87.97	87.17	86.95	86.28	86.56	86.46	85.77	84.49

Student Experience Survey: Reasons for Departure

Table 7: Student Experience Survey, reasons for departure and proportion of students considering leaving in 2015 and 2016

Departure Reason	Proportion considering leaving in 2015 (%)	Proportion considering leaving in 2016 (%)
Health or stress	43	41
Study / life balance	27	27
Expectations not met	26	26
Workload difficulties	25	25
Need to do paid work	26	25
Personal reasons	24	23
Financial difficulties	26	23
Academic support	20	21
Need a break	20	20
Quality concerns	24	20
Family responsibilities	17	18
Paid work responsibilities	16	17
Career prospects	17	17
Other	15	15
Administrative support	14	14
Boredom/lack of interest	15	14
Institution reputation	13	12
Fee difficulties	11	12
Commuting difficulties	10	10
Change of direction	11	10
Academic exchange	11	9
Gap year / deferral	6	7
Social reasons	5	6
Received other offer	5	6
Travel or tourism	5	5
Standards too high	5	5
Other opportunities	6	5
Moving residence	5	5
Government assistance	4	4
Graduating	3	4

Source: 2016 Student Experience Survey National Report, December 2016

Commencing Students by Age

Table 8: The number of commencing students by age

Age	2005	2006	2007	2008	2009	2010	2011	2012	2013	2014
16 and under	514	466	459	496	504	524	501	628	959	1,199
17	33,202	34,718	35,454	34,753	35,838	38,300	39,438	42,092	43,415	43,906
18	44,230	46,139	49,139	48,642	53,338	55,812	59,457	63,005	66,175	68,069
19	19,241	20,089	20,588	22,370	23,826	26,273	26,063	28,304	29,338	30,791
20	11,981	11,956	11,938	11,962	13,318	13,989	15,113	15,946	17,063	17,509
21	9,115	9,348	9,528	9,523	10,118	10,912	11,109	12,505	12,821	13,833
22	6,645	6,951	7,176	7,154	7,725	8,124	8,558	9,242	10,303	10,609
23	5,076	5,134	5,276	5,292	5,985	6,180	6,231	7,117	7,626	8,321
24	4,008	4,179	4,115	4,158	4,803	5,214	5,249	5,714	6,344	6,434
25	3,276	3,293	3,393	3,417	4,042	4,203	4,373	4,863	5,187	5,358
26	2,756	2,690	2,890	2,798	3,270	3,689	3,597	4,055	4,500	4,690
27	2,506	2,309	2,346	2,450	2,714	3,011	3,066	3,596	3,987	3,996
28	2,235	2,169	2,064	2,216	2,353	2,679	2,674	3,152	3,361	3,630
29	2,119	1,969	1,967	1,900	2,012	2,239	2,338	2,735	3,110	3,194
30 to 39	14,367	13,770	13,709	13,649	14,905	15,934	15,487	18,115	19,691	21,269
40 to 49	7,053	6,692	6,802	7,198	7,639	7,998	7,852	9,289	10,443	11,095
50 to 59	1,895	1,925	2,033	2,154	2,420	2,591	2,532	3,011	3,662	4,183
60 and over	258	269	326	410	453	426	484	606	870	1,198
Total	170,477	174,066	179,203	180,542	195,263	208,098	214,122	233,975	248,855	259,284

Attrition Rate by Age

Table 9: Attrition rate by age (per cent)

Age	2005	2006	2007	2008	2009	2010	2011	2012	2013	2014
16 and under	8.61	7.56	8.37	8.32	7.82	7.69	7.02	13.90	25.70	33.02
17	11.18	11.03	11.59	9.27	9.00	9.65	9.26	9.69	10.45	10.68
18	10.62	10.56	10.60	8.78	8.85	9.25	8.90	9.46	10.18	10.02
19	11.94	11.97	12.05	10.22	9.56	10.47	10.92	11.01	12.22	12.00
20	14.19	13.84	13.91	12.23	12.08	12.26	12.29	13.12	13.78	13.76
21	16.20	15.40	15.75	13.73	13.18	13.53	13.53	13.70	14.83	15.07
22	17.51	18.28	17.78	15.54	14.92	14.95	14.47	15.61	16.09	16.65
23	19.75	19.38	19.12	17.41	16.17	17.17	17.47	16.74	18.84	18.35
24	21.33	21.34	20.63	19.09	17.85	18.55	17.45	19.25	20.81	20.49
25	23.76	21.16	23.74	18.33	18.32	18.77	18.74	19.40	20.65	22.32
26	23.95	22.96	22.45	20.42	18.11	20.74	19.76	19.75	22.10	22.11
27	23.86	22.94	22.48	21.47	21.35	19.85	21.12	20.65	21.72	23.87
28	23.00	24.57	24.50	21.39	21.87	21.61	21.00	21.53	24.11	23.44
29	25.67	24.20	23.78	21.86	21.06	22.99	20.07	22.70	24.28	23.57
30-39	24.30	23.94	24.27	22.70	21.84	22.74	22.50	22.37	24.17	24.54
40-49	23.34	22.31	23.29	21.89	21.72	22.36	22.93	22.78	26.08	27.52
50-59	24.82	26.22	28.08	26.07	25.87	26.29	26.64	26.36	29.98	35.55
60 and over	23.87	30.58	29.01	27.11	24.80	26.86	25.37	25.65	38.31	41.45

Commencements by Mode of Attendance and Institution

Table 10: The number of commencing students by mode of attendance at selected institutions

Institution name	Mode of Attendance	2005	2006	2007	2008	2009	2010	2011	2012	2013	2014
Australian Catholic University	External	15	23	<5	<5	<5	5	27	272	375	390
	Internal	2,670	2,775	3,067	3,127	4,100	4,710	5,666	5,787	6,306	7,339
	Multi-modal	<5	<5	25	<5	<5	<5	22	20	12	72
Bond University	Internal	525	636	849	814	939	970	956	885	744	772
Charles Darwin University	External	608	625	843	980	1,167	1,231	1,180	1,443	1,549	1,640
	Internal	692	508	404	338	316	264	281	371	250	260
	Multi-modal	231	202	267	277	287	346	301	421	395	389
Charles Sturt University	External	2,938	2,872	3,072	2,876	3,432	4,289	3,771	4,035	3,952	4,123
	Internal	2,411	2,344	2,326	2,121	1,948	2,013	1,847	2,001	1,797	1,438
	Multi-modal	460	488	470	532	899	1,309	1,318	1,350	1,328	1,557
CQUniversity	External	1,473	1,443	1,502	1,452	1,482	1,874	2,009	2,383	2,594	2,702
	Internal	1,364	977	754	563	538	573	623	667	774	642
	Multi-modal	756	608	553	537	591	625	714	726	693	761
Curtin University of Technology	External	299	336	286	248	293	324	440	2,564	1,615	1,633
	Internal	4,966	5,122	5,175	5,155	5,514	5,882	6,055	6,279	6,762	7,024
	Multi-modal	233	181	187	163	218	404	392	479	594	945
Deakin University	External	1,104	841	826	695	709	778	937	1,184	1,491	2,027
	Internal	4,967	4,576	5,616	4,970	4,720	4,646	5,526	6,384	7,330	7,395
	Multi-modal	296	653	384	678	715	1,045	1,177	1,484	1,682	1,934
Edith Cowan University	External	402	316	286	385	482	698	839	877	962	1,227
	Internal	4,404	3,898	3,688	3,786	4,132	4,581	4,139	4,302	3,741	3,609
	Multi-modal	279	293	328	436	545	616	809	819	1,046	1,104
Federation University Australia	External	<5	<5	<5	54	8	<5	5	21	13	207
	Internal	1,225	1,284	1,375	1,485	1,476	1,829	1,836	1,792	1,968	2,284
	Multi-modal	<5	<5	<5	<5	<5	<5	<5	<5	11	10

Table 11: The number of commencing students by mode of attendance at selected institutions

Institution name	Mode of Attendance	2005	2006	2007	2008	2009	2010	2011	2012	2013	2014
Flinders University	External	56	69	55	67	66	76	94	74	94	109
	Internal	3,176	3,455	3,483	3,310	3,501	3,646	4,040	4,397	4,645	4,750
	Multi-modal	8	34	26	25	45	49	67	74	59	99
Griffith University	External	126	11	39	77	55	83	165	172	81	725
	Internal	7,346	7,604	7,853	7,009	7,955	8,619	8,061	9,036	9,788	6,845
	Multi-modal	338	213	250	369	355	402	425	448	524	3,034
James Cook University	External	109	64	140	217	191	182	150	193	260	280
	Internal	2,811	2,378	2,229	2,633	2,947	3,036	2,831	2,917	2,758	2,433
	Multi-modal	296	308	240	290	302	286	493	593	793	1,087
La Trobe University	External	<5	<5	<5	<5	<5	<5	9	18	45	68
	Internal	5,244	5,872	5,660	5,592	5,809	6,489	6,507	6,668	6,521	6,603
	Multi-modal	27	58	62	132	263	256	359	515	631	1,079
Macquarie University	External	368	380	336	236	342	351	350	497	516	439
	Internal	2,523	2,892	3,123	3,367	4,342	4,464	4,627	5,192	5,766	5,803
	Multi-modal	308	301	295	298	322	303	471	759	663	783
Monash University	External	457	391	370	301	432	356	388	354	379	57
	Internal	6,524	7,024	7,054	6,799	7,549	7,723	7,666	8,024	8,718	8,944
	Multi-modal	144	188	195	156	209	247	301	385	465	410
Murdoch University	External	323	385	415	468	556	408	465	582	592	541
	Internal	2,692	2,555	2,338	2,119	2,315	2,430	2,579	2,704	2,618	2,362
	Multi-modal	225	233	220	307	331	316	320	315	365	359
Queensland University of Technology	External	476	295	241	217	244	239	218	197	202	213
	Internal	8,087	8,450	8,959	8,505	8,441	8,394	9,189	10,297	9,764	10,114
	Multi-modal	146	78	84	79	86	66	118	105	84	100
RMIT University	External	25	<5	<5	8	5	<5	<5	<5	<5	<5
	Internal	4,990	5,408	4,814	5,216	5,020	5,540	6,019	7,042	7,610	7,434
	Multi-modal	434	349	393	453	306	297	361	490	434	738

Table 12: The number of commencing students by mode of attendance at selected institutions

Institution name	Mode of Attendance	2005	2006	2007	2008	2009	2010	2011	2012	2013	2014
Southern Cross University	External	1,107	961	1,274	1,216	1,257	1,057	1,046	1,014	1,112	1,166
	Internal	1,896	1,813	1,819	1,583	1,515	1,519	1,344	1,168	1,346	1,333
	Multi-modal	397	418	394	404	641	666	797	990	986	908
Swinburne University of Technology	External	<5	<5	<5	<5	<5	<5	<5	2,436	5,093	5,391
	Internal	2,747	2,690	2,706	2,770	3,238	3,851	4,045	3,892	3,974	3,658
	Multi-modal	<5	<5	<5	<5	<5	<5	<5	24	10	91
The Australian National University	External	<5	<5	<5	<5	<5	<5	<5	<5	<5	<5
	Internal	1,906	1,870	2,261	2,293	2,156	2,238	2,223	2,637	2,480	2,673
	Multi-modal	<5	<5	<5	<5	<5	<5	<5	<5	<5	<5
The University of Adelaide	External	21	10	15	12	7	8	7	<5	<5	<5
	Internal	3,028	3,232	3,507	3,543	4,007	4,212	4,481	4,860	4,781	4,840
	Multi-modal	<5	<5	<5	<5	<5	<5	<5	<5	<5	135
The University of Melbourne	External	42	27	22	<5	<5	<5	<5	<5	<5	<5
	Internal	5,758	5,269	5,782	5,283	5,185	5,052	5,581	5,768	5,925	5,920
	Multi-modal	<5	<5	<5	<5	<5	<5	<5	<5	<5	15
The University of New England	External	2,179	2,170	2,282	2,359	2,459	2,797	2,714	3,239	3,508	3,545
	Internal	947	946	817	698	666	725	801	751	706	753
	Multi-modal	417	207	195	376	316	361	334	441	468	469
The University of Newcastle	External	49	46	77	94	109	142	142	152	148	141
	Internal	4,788	5,102	6,071	6,019	5,801	6,313	6,478	6,458	6,536	6,142
	Multi-modal	119	70	173	190	139	222	302	380	414	595
The University of Notre Dame Australia	External	<5	<5	<5	13	6	9	8	<5	<5	<5
	Internal	1,122	1,618	1,643	1,852	2,338	2,412	2,448	2,426	2,629	2,504
	Multi-modal	7	<5	<5	<5	<5	<5	8	13	<5	<5
The University of Queensland	External	88	86	73	102	87	88	75	89	50	58
	Internal	7,057	7,437	7,296	7,194	7,450	8,093	8,158	8,384	9,195	9,172
	Multi-modal	119	99	74	108	146	112	137	145	144	114

Table 13: The number of commencing students by mode of attendance at selected institutions

Institution name	Mode of Attendance	2005	2006	2007	2008	2009	2010	2011	2012	2013	2014
The University of Sydney	External	8	<5	<5	5	7	8	<5	<5	<5	<5
	Internal	8,043	7,607	7,240	7,574	8,397	8,392	8,111	9,425	8,771	8,755
	Multi-modal	54	71	449	433	396	524	289	358	282	281
The University of Western Australia	Internal	3,223	3,543	3,537	3,737	4,235	4,305	4,732	4,987	4,467	4,329
	Multi-modal	<5	<5	<5	<5	<5	<5	<5	47	<5	<5
University of Canberra	External	<5	<5	<5	<5	<5	<5	<5	<5	<5	<5
	Internal	<5	<5	<5	<5	1,800	1,392	1,347	895	417	1,950
	Multi-modal	2,177	2,074	2,262	2,329	1,446	1,960	1,943	2,498	3,483	1,916
University of New South Wales	External	51	37	<5	<5	5	14	11	15	12	14
	Internal	5,331	6,346	6,647	6,282	6,985	7,303	7,411	7,716	8,338	8,364
	Multi-modal	<5	<5	<5	<5	9	<5	<5	<5	<5	<5
University of South Australia	External	524	620	584	598	712	812	774	943	948	935
	Internal	4,388	4,463	4,271	3,986	4,240	4,375	4,131	4,439	4,473	4,739
	Multi-modal	772	972	667	859	667	640	658	659	804	663
University of Southern Queensland	External	1,620	1,529	1,690	1,746	2,099	2,240	2,222	2,362	2,246	3,194
	Internal	1,025	1,069	1,015	984	1,419	1,003	1,389	773	833	870
	Multi-modal	485	512	511	480	447	711	262	1,020	904	1,067
University of Tasmania	External	198	205	341	400	304	428	437	1,120	2,222	4,276
	Internal	3,515	3,351	3,196	2,910	2,990	3,287	2,865	3,121	4,656	4,674
	Multi-modal	160	196	328	452	565	631	669	983	1,179	1,453
University of Technology, Sydney	External	<5	<5	<5	<5	<5	<5	<5	<5	<5	<5
	Internal	4,565	5,004	4,978	5,082	4,812	4,690	5,610	5,659	6,014	6,834
	Multi-modal	<5	10	<5	<5	<5	<5	<5	<5	<5	<5
University of the Sunshine Coast	Internal	1,464	1,475	1,731	1,778	2,204	2,243	2,468	2,620	2,951	3,071
	Multi-modal	<5	<5	<5	<5	<5	<5	<5	<5	11	16
University of Wollongong	External	<5	<5	<5	<5	<5	<5	13	<5	5	<5
	Internal	3,150	3,103	3,379	3,601	3,980	4,396	4,461	4,388	4,501	4,779

Table 14: The number of commencing students by mode of attendance at selected institutions

Institution name	Mode of Attendance	2005	2006	2007	2008	2009	2010	2011	2012	2013	2014
Victoria University	External	26	14	22	20	48	39	67	112	129	70
	Internal	4,151	4,348	4,260	4,114	4,790	5,115	4,985	5,019	5,330	5,005
	Multi-modal	45	<5	6	<5	<5	<5	<5	<5	6	6
Western Sydney University	External	133	108	90	133	117	111	109	73	127	110
	Internal	8,847	8,515	7,959	8,873	9,057	9,857	9,884	9,841	10,327	10,976
	Multi-modal	151	143	76	81	75	109	148	241	299	360

Attrition Rates by Mode of Attendance and Institution

Table 15: The attrition rate of commencing students by mode of attendance at selected institutions (per cent)

Institution	Mode of Attendance	2005	2006	2007	2008	2009	2010	2011	2012	2013	2014
Australian Catholic University	External	33.33	21.74	25.00	0.00	0.00	40.00	22.22	13.24	17.33	21.54
	Internal	13.11	12.36	11.77	12.70	12.90	13.52	13.20	13.37	13.86	14.84
	Multi-modal		0.00	12.00	0.00	0.00		22.73	25.00	8.33	33.33
Bond University	Internal	11.24	9.59	10.37	11.43	9.58	8.45	10.25	10.06	11.02	10.62
Charles Darwin University	External	30.43	33.92	32.15	29.80	28.11	31.44	30.08	30.91	28.79	29.21
	Internal	27.31	28.94	28.22	28.70	25.32	29.92	29.89	24.26	30.40	25.38
	Multi-modal	20.78	14.85	13.11	12.64	12.89	9.54	12.96	13.78	13.16	13.88
Charles Sturt University	External	28.15	29.77	31.09	26.98	25.64	27.61	28.67	26.84	27.53	30.20
	Internal	11.45	12.76	12.73	11.41	13.86	13.26	12.62	13.99	17.25	17.66
	Multi-modal	11.30	11.07	11.49	8.83	8.45	10.39	7.97	10.30	10.84	9.83
Central Queensland University	External	38.49	37.91	33.09	32.02	30.30	30.74	30.41	29.54	28.60	27.91
	Internal	29.11	27.64	29.05	26.11	28.62	23.21	27.93	24.59	23.51	21.50
	Multi-modal	19.18	18.59	17.18	17.69	18.27	14.56	17.79	13.09	13.13	12.75
Curtin University of Technology	External	29.10	27.68	26.92	28.23	23.55	28.40	27.95	18.33	21.73	19.78
	Internal	13.43	12.98	15.73	11.81	11.75	12.90	11.81	13.47	12.76	12.86
	Multi-modal	21.03	17.68	21.39	17.18	17.89	14.60	14.29	13.36	13.13	13.97
Deakin University	External	29.62	29.37	27.72	25.90	26.38	23.91	23.69	22.97	22.87	25.01
	Internal	13.21	12.54	12.20	11.35	10.15	9.23	10.48	10.98	12.78	13.31
	Multi-modal	10.14	11.18	10.42	9.00	6.71	5.36	6.29	6.94	7.49	7.60
Edith Cowan University	External	43.03	43.35	36.36	38.18	36.10	33.81	35.16	36.03	37.84	35.45
	Internal	17.87	18.68	20.15	16.67	16.92	16.33	16.26	16.20	19.11	17.51
	Multi-modal	18.28	16.04	17.07	16.06	13.76	14.29	13.60	12.94	16.06	15.94
Federation University Australia	External				68.52	37.50	0.00	0.00	4.76	23.08	39.61
	Internal	15.35	18.30	16.58	18.05	12.94	16.13	17.37	19.31	21.39	21.80
	Multi-modal		0.00			100.00			0.00	0.00	20.00

Table 16: The attrition rate of commencing students by mode of attendance at selected institutions (per cent)

Institution	Mode of Attendance	2005	2006	2007	2008	2009	2010	2011	2012	2013	2014
Flinders University	External	41.07	33.33	45.45	32.84	28.79	34.21	38.30	36.49	32.98	35.78
	Internal	16.31	14.85	17.00	13.50	15.25	14.76	14.26	15.33	17.01	16.78
	Multi-modal	0.00	8.82	11.54	8.00	8.89	10.20	10.45	13.51	11.86	16.16
Griffith University	External	33.33	81.82	35.90	28.57	25.45	31.33	29.09	25.00	22.22	16.28
	Internal	17.68	17.82	18.49	15.41	15.54	16.06	14.56	15.41	16.12	16.89
	Multi-modal	23.08	21.13	19.60	12.47	15.21	14.43	9.41	10.27	10.88	14.11
James Cook University	External	42.20	35.94	43.57	39.17	36.13	39.01	40.00	47.67	38.08	36.07
	Internal	21.06	22.12	19.43	17.36	16.49	18.18	19.22	20.29	17.98	19.19
	Multi-modal	27.36	30.84	27.92	22.41	16.56	19.93	12.58	14.50	12.48	14.63
La Trobe University	External				100.00	100.00	0.00	44.44	38.89	24.44	27.94
	Internal	14.19	13.59	14.88	13.97	12.08	13.39	12.19	11.65	12.24	12.02
	Multi-modal	25.93	10.34	14.52	5.30	7.60	8.20	6.41	7.57	7.29	8.06
Macquarie University	External	32.88	27.11	27.08	26.27	29.24	31.05	31.71	29.98	23.26	22.78
	Internal	7.77	7.33	7.30	7.96	7.12	8.06	7.33	8.72	8.57	9.12
	Multi-modal	9.74	8.31	8.81	6.71	6.83	7.92	8.70	6.98	6.79	7.28
Monash University	External	32.39	30.95	24.86	27.91	25.93	21.91	18.56	18.64	22.69	26.32
	Internal	9.18	8.40	7.40	6.22	6.12	6.90	6.21	5.87	6.64	6.26
	Multi-modal	13.19	13.30	10.26	13.46	12.44	11.34	7.97	8.83	7.53	8.05
Murdoch University	External	34.37	39.74	34.70	27.78	33.45	34.31	28.82	30.24	29.90	28.65
	Internal	16.68	18.32	18.35	15.29	16.85	16.13	14.97	16.90	19.67	17.15
	Multi-modal	16.89	12.88	17.73	15.96	15.41	12.66	18.13	18.10	22.47	15.32
Queensland University of Technology	External	32.35	33.90	26.56	29.49	20.90	25.10	23.85	29.95	22.77	31.46
	Internal	13.27	14.33	14.30	12.11	10.65	11.42	10.81	10.54	11.40	11.61
	Multi-modal	8.90	15.38	10.71	13.92	15.12	16.67	11.02	8.57	17.86	11.00
RMIT University	External	40.00	75.00	0.00	37.50	0.00	50.00	33.33	33.33	100.00	0.00
	Internal	14.45	13.54	12.69	11.96	10.56	10.85	10.72	10.76	9.87	10.56
	Multi-modal	9.22	9.17	8.65	6.40	6.21	7.74	6.65	7.35	7.60	8.40

Table 17: The attrition rate of commencing students by mode of attendance at selected institutions (per cent)

Institution	Mode of Attendance	2005	2006	2007	2008	2009	2010	2011	2012	2013	2014
Southern Cross University	External	35.86	36.94	33.28	29.36	32.06	30.65	30.78	31.16	31.38	34.13
	Internal	22.94	20.52	19.96	19.08	20.79	18.96	22.47	29.11	24.59	24.68
	Multi-modal	18.14	15.31	20.81	14.36	12.48	10.06	10.66	11.01	13.08	12.00
Swinburne University of Technology	External								34.52	38.60	32.72
	Internal	14.67	14.13	14.08	14.69	13.06	12.80	13.72	13.57	14.59	13.42
	Multi-modal								0.00	0.00	4.40
The Australian National University	External							0.00			
	Internal	7.97	8.13	8.31	6.50	5.10	6.08	5.31	6.56	7.78	7.37
	Multi-modal									0.00	
The University of Adelaide	External	19.05	30.00	60.00	33.33	57.14	12.50	28.57	33.33		
	Internal	11.69	11.63	11.06	9.43	8.96	10.35	10.73	12.37	10.52	11.74
	Multi-modal			0.00							5.93
The University of Melbourne	External	28.57	59.26	22.73	0.00						0.00
	Internal	5.90	5.47	5.29	4.96	3.74	4.53	5.16	3.83	4.42	3.72
	Multi-modal	0.00	0.00	0.00	0.00			0.00	0.00	50.00	13.33
The University of New England	External	30.70	28.34	26.21	24.42	25.05	24.06	24.02	25.32	25.23	26.97
	Internal	14.68	17.55	13.46	9.74	8.41	10.21	12.61	13.45	14.02	13.94
	Multi-modal	15.59	10.63	12.31	7.71	10.44	10.80	11.08	8.39	10.26	6.40
The University of Newcastle	External	24.49	15.22	37.66	28.72	30.28	35.21	24.65	23.03	33.11	29.08
	Internal	12.74	12.52	14.05	11.73	13.46	12.97	13.65	13.75	14.31	14.56
	Multi-modal	8.40	12.86	11.56	5.26	7.91	9.46	10.93	9.47	11.11	11.60
The University of Notre Dame Australia	External	50.00	33.33	50.00	53.85	50.00	33.33	25.00	0.00	25.00	0.00
	Internal	16.13	13.66	10.89	8.75	9.02	10.36	11.36	10.06	10.42	9.58
	Multi-modal	57.14	50.00			50.00	100.00	25.00	46.15	50.00	0.00

Table 18: The attrition rate of commencing students by mode of attendance at selected institutions (per cent)

Institution	Mode of Attendance	2005	2006	2007	2008	2009	2010	2011	2012	2013	2014
The University of Queensland	External	32.95	27.91	43.84	35.29	25.29	38.64	36.00	35.96	34.00	41.38
	Internal	10.78	11.99	13.99	8.72	8.85	9.14	8.05	8.24	9.36	9.71
	Multi-modal	12.61	14.14	17.57	5.56	9.59	14.29	5.84	13.79	9.72	10.53
The University of Sydney	External	12.50	100.00		0.00	28.57	0.00	0.00	100.00		100.00
	Internal	6.84	6.44	6.82	5.68	5.99	5.66	5.41	5.55	6.23	6.01
	Multi-modal	12.96	8.45	5.12	3.70	3.79	2.48	3.11	2.79	1.77	3.20
The University of Western Australia	Internal	8.97	8.81	8.65	7.47	7.91	7.15	7.19	6.62	6.85	7.67
	Multi-modal				0.00	0.00			6.38		
University of Canberra	External										100.00
	Internal					14.39	21.41	18.41	19.44	28.06	19.33
	Multi-modal	14.06	15.77	15.16	14.26	10.10	10.92	12.71	13.53	16.14	15.45
University of New South Wales	External	21.57	27.03	25.00		20.00	35.71	54.55	20.00	25.00	7.14
	Internal	8.01	7.00	6.41	5.81	5.23	5.59	5.15	4.82	5.35	4.79
	Multi-modal	0.00	0.00			11.11	0.00	0.00			
University of South Australia	External	35.11	32.42	34.42	28.43	22.89	25.99	31.40	21.63	25.84	21.82
	Internal	16.50	17.34	17.21	14.75	13.21	13.67	14.91	15.09	14.91	15.19
	Multi-modal	13.21	11.93	11.84	10.48	11.09	9.38	9.88	10.93	13.68	14.63
University of Southern Queensland	External	30.37	29.95	28.11	28.18	26.92	28.53	26.69	28.32	27.60	23.17
	Internal	23.02	21.80	24.83	18.70	17.41	22.83	18.00	23.29	27.13	28.05
	Multi-modal	10.93	13.09	10.96	8.54	12.08	12.52	20.23	15.20	15.38	14.53
University of Tasmania	External	38.98	36.98	32.49	26.50	28.62	32.01	39.13	36.25	39.29	50.89
	Internal	15.96	17.77	18.14	18.97	15.79	18.13	15.88	17.65	32.90	32.88
	Multi-modal	18.75	18.37	12.20	9.73	12.39	11.57	9.27	10.99	13.15	17.48
University of Technology, Sydney	External	50.00		0.00				0.00			
	Internal	8.17	7.97	8.92	6.32	7.34	7.46	7.45	7.47	8.30	7.73
	Multi-modal	50.00	20.00	0.00	0.00	0.00		0.00	0.00	0.00	0.00

Table 19: The attrition rate of commencing students by mode of attendance at selected institutions (per cent)

Institution	Mode of Attendance	2005	2006	2007	2008	2009	2010	2011	2012	2013	2014
University of the Sunshine Coast	Internal	27.73	27.73	26.63	20.47	19.51	20.11	21.07	21.37	22.09	20.06
	Multi-modal				0.00	0.00	100.00			9.09	31.25
University of Wollongong	External							15.38		0.00	
	Internal	10.41	10.44	9.97	8.00	8.42	9.37	9.73	9.57	10.58	10.69
Victoria University	External	19.23	35.71	27.27	35.00	18.75	25.64	10.45	16.96	23.26	21.43
	Internal	19.06	18.35	18.50	14.95	15.97	17.36	15.05	18.01	20.47	19.48
	Multi-modal	6.67	100.00	33.33			0.00		25.00	0.00	0.00
Western Sydney University	External	34.59	31.48	36.67	34.59	27.35	25.23	33.03	28.77	20.47	26.36
	Internal	13.36	11.79	13.27	11.04	10.91	11.24	11.63	12.68	12.46	14.03
	Multi-modal	13.25	11.89	13.16	11.11	14.67	11.01	12.84	9.96	9.70	12.78

Commencements by Field of Education: number of students

Table 19: The number of commencing students by field of education

Commencements	2005	2006	2007	2008	2009	2010	2011	2012	2013	2014	2015
Total	175,712	180,313	186,691	189,516	204,879	220,104	226,837	248,510	263,073	272,229	276,234
Natural and Physical Sciences	17,692	17,611	17,701	17,515	19,885	22,783	24,460	27,869	29,019	29,857	29,192
Information Technology	7,023	6,171	5,871	5,650	6,227	6,671	7,253	7,917	8,046	9,072	9,501
Engineering and Related Technologies	10,619	11,046	12,084	12,321	13,215	14,182	14,710	15,489	17,107	16,976	16,512
Architecture and Building	4,351	5,028	5,311	5,392	5,329	5,750	6,128	6,286	6,199	6,053	6,666
Agriculture, Environmental and Related Studies	3,697	3,438	3,397	3,563	3,813	3,959	3,901	3,848	4,068	3,824	3,520
Health	25,074	27,901	30,681	31,618	33,976	37,372	38,660	42,494	47,406	50,546	54,198
Education	21,695	21,100	21,236	19,746	21,435	22,451	22,511	25,294	25,733	27,054	26,120
Management and Commerce	31,934	32,451	33,473	34,181	34,748	34,462	35,754	39,312	40,713	44,462	43,295
Society and Culture	45,450	46,428	46,794	47,113	51,887	57,123	57,386	62,407	65,620	66,373	69,996
Creative Arts	15,549	16,706	18,420	19,328	22,083	23,130	24,105	25,690	27,503	27,066	27,492

Table 20: The growth of commencing students by field of education (per cent)

Commencement Growth	2005	2006	2007	2008	2009	2010	2011	2012	2013	2014	2015
Total	6.0	2.6	3.5	1.5	8.1	7.4	3.1	9.6	5.9	3.5	1.5
Natural and Physical Sciences	-3.3	-0.5	0.5	-1.1	13.5	14.6	7.4	13.9	4.1	2.9	-2.2
Information Technology	-14.6	-12.1	-4.9	-3.8	10.2	7.1	8.7	9.2	1.6	12.8	4.7
Engineering and Related Technologies	-0.3	4.0	9.4	2.0	7.3	7.3	3.7	5.3	10.4	-0.8	-2.7
Architecture and Building	13.6	15.6	5.6	1.5	-1.2	7.9	6.6	2.6	-1.4	-2.4	10.1
Agriculture, Environmental and Related Studies	-21.9	-7.0	-1.2	4.9	7.0	3.8	-1.5	-1.4	5.7	-6.0	-7.9
Health	14.2	11.3	10.0	3.1	7.5	10.0	3.4	9.9	11.6	6.6	7.2
Education	7.3	-2.7	0.6	-7.0	8.6	4.7	0.3	12.4	1.7	5.1	-3.5
Management and Commerce	6.6	1.6	3.1	2.1	1.7	-0.8	3.7	10.0	3.6	9.2	-2.6
Society and Culture	12.0	2.2	0.8	0.7	10.1	10.1	0.5	8.7	5.1	1.1	5.5
Creative Arts	7.2	7.4	10.3	4.9	14.3	4.7	4.2	6.6	7.1	-1.6	1.6

Correlation of FOE and Attrition Rate

The following table compares the number of domestic bachelor commencing students and the attrition rates by field of education from 2005 to 2014. The FOEs of education and Health show strong correlations with changes in student numbers and attrition rates, but other fields' correlation coefficients are not statistically significant.

Table 21: Correlation of attrition rate and field of education

Field of Education	Correlation Coefficient
Natural and Physical Sciences	-0.54
Information Technology	-0.57
Engineering and Related Technologies	-0.48
Architecture and Building	0.52
Agriculture, Environmental and Related Studies	-0.45
Health	0.71
Education	0.87
Management and Commerce	0.45
Society and Culture	-0.39
Creative Arts	0.30

Attrition Rates by FOE

The following tables show the different attrition rates by FOE. Table 22 shows the national attrition rates (per cent) by FOEs and Table 23 shows the different attrition rates (per cent) by FOE for the national total excluding UTas, FU and SUT.

Table 22: Attrition rate by Field of Education (per cent)

National Total	2005	2006	2007	2008	2009	2010	2011	2012	2013	2014
Natural and Physical Sciences	12.66	12.26	12.52	10.27	9.87	10.24	9.80	9.74	10.75	10.67
Information Technology	18.77	19.37	19.67	17.23	16.30	15.52	15.00	15.29	16.14	15.70
Engineering and Related Technologies	11.42	9.59	9.90	8.35	8.41	8.46	7.71	8.56	9.08	9.26
Architecture and Building	11.40	11.11	12.26	11.24	10.60	11.61	12.02	11.42	13.45	12.97
Agriculture, Environmental and Related Studies	19.45	17.56	18.22	14.46	15.19	16.26	15.74	15.67	15.19	17.07
Health	11.63	11.46	11.79	10.19	10.45	10.73	11.14	12.15	13.57	14.19
Education	15.87	15.91	16.35	15.62	15.46	16.47	15.92	16.49	18.76	19.61
Management and Commerce	15.41	14.75	14.64	12.33	12.18	12.73	12.33	13.52	15.26	16.93
Society and Culture	17.61	17.57	17.55	15.17	14.21	15.39	14.93	15.41	16.18	16.06
Creative Arts	15.00	14.94	15.41	13.49	13.27	13.58	13.70	14.44	17.10	16.39

Table 23: Attrition rate by Field of Education (per cent)

Minus UTas, FU & SUT	2005	2006	2007	2008	2009	2010	2011	2012	2013	2014
Natural and Physical Sciences	12.67	12.05	12.50	10.00	9.69	10.14	9.72	9.68	10.54	10.30
Information Technology	18.63	19.23	19.59	16.90	16.19	15.14	14.94	14.76	15.79	15.29
Engineering and Related Technologies	11.16	9.09	9.49	8.19	8.20	8.42	7.60	8.58	8.60	8.78
Architecture and Building	11.37	10.90	12.22	11.30	10.60	11.44	12.04	11.19	13.41	12.95
Agriculture, Environmental and Related Studies	19.32	17.41	18.20	14.27	15.22	16.10	15.70	15.80	15.31	17.04
Health	11.66	11.43	11.82	10.08	10.42	10.71	11.13	11.70	12.67	12.57
Education	15.98	15.95	16.25	15.44	15.45	16.27	15.54	16.13	17.13	18.05
Management and Commerce	15.37	14.68	14.52	12.11	12.08	12.60	12.13	12.58	13.02	12.87
Society and Culture	17.45	17.35	17.27	14.87	14.03	15.13	14.73	14.91	15.21	15.32
Creative Arts	15.14	15.11	15.56	13.09	13.27	13.58	13.53	13.86	14.02	14.46

Socioeconomic Status Attrition Rate by Provider

Table 24: Attrition rate by socioeconomic status and provider (per cent)

Provider	Socioeconomic Status	2005	2006	2007	2008	2009	2010	2011	2012	2013	2014
University of Tasmania	High SES	16.11	17.87	16.83	17.67	15.51	16.80	13.84	18.11	36.72	38.00
	Low SES	17.50	19.97	20.63	20.61	16.22	20.86	18.75	21.31	30.15	38.43
	Medium SES	17.04	18.44	18.38	17.55	16.44	17.84	17.55	20.84	30.24	37.47
Charles Darwin University	High SES	21.07	28.51	31.09	22.18	22.33	25.75	30.40	28.69	25.00	24.03
	Low SES	26.90	33.15	28.23	29.39	25.96	29.83	25.08	30.98	31.86	27.76
	Medium SES	29.03	28.43	26.75	26.62	25.87	26.60	27.00	24.45	24.68	26.33
Swinburne University of Technology	High SES	14.91	13.57	14.45	17.71	13.69	12.65	13.97	18.99	22.94	21.39
	Low SES	14.89	13.70	15.59	11.97	9.35	11.79	12.96	25.64	34.93	30.21
	Medium SES	14.20	14.57	13.62	12.02	13.25	13.31	13.68	22.21	28.83	24.72
Federation University Australia	High SES	15.22	15.38	13.40	27.12	17.71	21.10	18.32	15.93	23.38	22.99
	Low SES	14.44	19.35	19.38	17.52	14.94	19.21	19.36	20.44	23.06	25.46
	Medium SES	15.54	18.40	16.01	19.69	12.32	14.43	16.18	18.80	20.63	22.59
Southern Cross University	High SES	30.20	28.27	26.94	23.99	26.46	24.15	21.23	22.64	17.80	21.96
	Low SES	27.13	26.61	24.79	24.23	21.78	19.42	20.70	23.47	25.17	23.15
	Medium SES	25.49	23.44	24.61	21.29	23.39	21.07	23.12	24.56	23.60	25.32
Central Queensland University	High SES	36.25	34.56	29.59	24.71	38.41	31.86	26.20	27.46	26.92	21.88
	Low SES	29.80	29.19	28.22	25.94	26.04	25.40	29.11	26.16	24.66	22.78
	Medium SES	30.65	31.07	29.54	30.11	26.83	25.61	25.73	24.75	25.06	25.71
Charles Sturt University	High SES	20.16	21.25	23.02	16.60	17.50	20.91	19.94	19.64	21.08	22.99
	Low SES	18.92	20.70	19.58	18.35	20.19	20.87	21.03	20.51	22.36	24.10
	Medium SES	20.05	21.28	22.98	20.13	19.91	20.56	20.47	20.45	21.87	22.64
The University of New England	High SES	27.04	25.55	25.22	20.72	22.51	22.40	20.51	22.11	23.18	23.40
	Low SES	22.34	23.54	19.78	19.79	19.01	19.91	19.03	21.19	22.02	23.50
	Medium SES	24.38	23.93	22.58	19.03	20.49	19.92	21.00	21.73	21.68	22.40
University of Southern Queensland	High SES	26.02	27.89	27.19	27.95	26.92	28.09	22.36	28.31	28.57	18.49
	Low SES	20.02	22.45	24.27	22.54	22.01	24.67	21.56	24.01	25.42	24.62
	Medium SES	20.73	25.06	23.75	21.10	20.70	23.03	24.43	23.40	23.67	21.37
Edith Cowan University	High SES	18.81	20.84	22.93	18.94	18.44	18.06	19.19	19.75	20.73	19.88
	Low SES	19.09	21.27	21.19	24.02	19.05	18.16	18.89	19.61	23.48	23.42
	Medium SES	20.58	19.70	20.12	17.16	18.19	18.19	18.28	18.09	21.75	20.66
University of the Sunshine Coast	High SES	27.66	37.50	20.51	27.59	13.95	22.22	15.22	12.28	14.55	24.53
	Low SES	23.38	27.62	29.54	20.51	20.77	18.53	20.54	25.00	23.24	19.04
	Medium SES	28.50	27.31	26.31	20.25	19.48	20.42	21.34	20.96	21.97	20.24
Victoria University	High SES	19.05	18.68	20.52	15.77	17.84	17.00	17.58	18.30	20.09	19.05
	Low SES	19.09	18.65	17.90	14.01	14.24	16.49	15.27	16.13	20.96	19.48
	Medium SES	17.95	17.91	18.05	14.78	16.12	17.98	13.63	18.44	20.51	19.80
Murdoch University	High SES	17.02	19.73	20.00	15.60	19.06	15.68	15.79	17.43	19.17	16.39
	Low SES	19.86	24.20	26.35	19.76	22.44	23.01	19.53	22.56	23.57	23.58
	Medium SES	18.96	19.49	18.83	17.84	18.45	17.70	16.82	18.72	21.79	17.95

Table 25: Attrition rate by socioeconomic status and provider (per cent)

Provider	Socioeconomic Status	2005	2006	2007	2008	2009	2010	2011	2012	2013	2014
Flinders University	High SES	14.96	15.35	16.53	14.54	14.70	13.87	15.02	14.43	18.05	16.90
	Low SES	18.17	15.18	18.74	13.19	16.24	18.32	16.09	17.14	17.89	18.75
	Medium SES	16.90	15.12	17.51	13.81	15.62	14.24	14.17	15.46	16.71	16.62
Griffith University	High SES	19.93	19.35	22.11	16.76	16.52	16.43	15.65	15.96	14.52	17.54
	Low SES	18.86	19.89	19.62	17.02	15.55	15.56	16.35	17.90	17.34	15.71
	Medium SES	17.47	17.17	17.61	14.80	15.42	16.19	13.80	14.58	15.96	15.79
University of South Australia	High SES	16.39	17.73	18.95	13.69	14.99	15.62	17.01	15.65	14.35	15.86
	Low SES	18.38	18.55	18.74	16.18	14.45	14.86	16.10	16.22	16.95	17.22
	Medium SES	18.13	17.79	17.92	16.29	13.68	14.63	16.64	15.46	17.06	15.65
Australian Catholic University	High SES	13.93	12.84	12.36	13.23	13.33	13.82	13.24	14.21	14.42	14.60
	Low SES	10.76	10.61	10.95	13.73	14.35	13.39	14.40	13.89	14.50	17.05
	Medium SES	12.98	12.28	11.52	12.11	12.19	13.42	13.08	12.74	13.74	15.47
University of Canberra	High SES	13.95	16.23	16.80	14.75	12.94	16.41	16.02	14.22	17.18	18.23
	Low SES	14.77	13.28	11.43	11.33	15.21	12.82	10.92	16.94	18.39	11.64
	Medium SES	14.13	14.90	11.72	13.90	10.75	13.65	13.93	16.12	17.46	16.89
James Cook University	High SES	17.74	15.00	11.11	12.99	11.96	14.29	12.09	15.05	11.19	5.50
	Low SES	22.48	21.82	19.64	19.37	17.61	19.77	18.69	20.07	18.79	19.56
	Medium SES	22.50	24.46	22.71	19.44	17.95	19.65	19.76	21.35	18.41	19.46
Deakin University	High SES	15.36	13.94	12.48	11.41	10.57	8.72	10.14	11.27	13.67	13.72
	Low SES	15.97	17.09	15.32	13.67	14.16	12.38	13.43	12.84	14.00	15.29
	Medium SES	16.31	14.55	14.64	13.30	11.65	10.88	11.64	12.06	13.08	14.63
Curtin University of Technology	High SES	14.23	14.78	15.49	11.23	13.60	14.22	13.72	13.92	13.94	14.26
	Low SES	15.11	15.64	17.19	16.49	12.96	16.07	12.59	17.77	17.49	15.56
	Medium SES	14.77	13.02	16.83	12.90	11.50	12.90	12.49	14.57	13.83	13.63
Western Sydney University	High SES	14.65	11.99	16.05	14.03	11.53	12.24	12.02	14.05	13.30	15.48
	Low SES	13.94	12.04	12.28	10.77	10.22	11.17	11.78	13.51	12.50	13.90
	Medium SES	13.13	12.06	12.79	10.44	11.32	11.14	11.91	11.92	12.17	13.74
The University of Newcastle	High SES	13.43	15.12	15.23	9.47	11.23	12.37	12.13	13.55	13.94	11.58
	Low SES	13.37	12.89	14.49	12.69	14.64	14.26	15.06	14.27	15.00	15.08
	Medium SES	12.34	12.02	14.10	11.90	13.57	13.10	13.45	13.55	14.38	14.85
Queensland University of Technology	High SES	14.98	14.76	14.04	12.14	10.92	11.74	11.22	10.57	10.96	11.57
	Low SES	15.60	15.76	15.80	14.27	9.86	12.53	11.95	12.88	13.30	13.71
	Medium SES	13.22	14.90	14.61	12.34	11.29	11.66	10.74	10.48	11.65	11.88
The University of Adelaide	High SES	11.49	10.48	10.77	9.32	7.97	10.18	9.30	10.77	9.48	11.45
	Low SES	10.92	16.04	9.89	10.56	10.56	9.30	10.89	16.15	12.51	11.44
	Medium SES	12.20	11.49	12.18	9.47	9.38	11.02	11.83	12.18	10.56	11.73
La Trobe University	High SES	14.66	13.15	14.29	14.24	11.74	14.49	11.53	12.43	12.59	10.84
	Low SES	13.43	13.52	13.80	13.09	11.98	11.65	12.40	11.54	11.13	11.58
	Medium SES	14.26	13.77	15.54	13.92	11.91	13.11	11.97	10.92	11.77	12.02
University of Wollongong	High SES	12.14	12.79	9.50	7.98	6.60	10.87	11.21	8.54	11.76	11.27
	Low SES	10.22	9.31	10.30	8.11	8.49	8.42	10.88	11.86	11.01	11.64
	Medium SES	10.13	10.41	9.91	8.00	8.66	9.51	8.98	8.86	10.11	10.09

Table 26: Attrition rate by socioeconomic status and provider (per cent)

Provider	Socioeconomic Status	2005	2006	2007	2008	2009	2010	2011	2012	2013	2014
The University of Queensland	High SES	11.51	12.60	14.88	9.01	8.96	10.20	8.65	8.28	8.42	9.67
	Low SES	12.98	13.59	16.99	10.70	11.03	9.91	8.68	9.95	11.92	12.18
	Medium SES	9.80	11.28	12.75	8.50	8.49	8.86	7.93	8.60	9.64	9.40
RMIT University	High SES	13.96	13.34	12.41	12.47	10.94	10.52	10.48	9.46	10.22	10.52
	Low SES	15.88	13.52	13.05	12.26	10.22	11.59	11.63	12.73	9.72	9.55
	Medium SES	13.75	13.29	12.11	10.37	9.97	10.60	9.97	10.67	9.37	10.49
Macquarie University	High SES	10.68	8.70	8.29	8.60	8.08	8.68	8.56	10.18	8.85	9.79
	Low SES	11.92	17.31	16.02	9.96	9.14	12.66	10.54	8.76	10.38	10.64
	Medium SES	10.95	9.26	9.57	9.55	9.68	10.61	9.64	10.43	10.65	9.50
The University of Notre Dame Australia	High SES	17.22	14.00	10.07	8.06	8.69	10.34	12.12	10.34	11.29	9.39
	Low SES	17.98	18.42	12.86	12.00	9.94	8.37	14.97	10.58	11.16	10.77
	Medium SES	15.33	12.61	11.93	9.57	9.55	11.09	10.01	10.17	9.54	9.49
Bond University	High SES	9.17	3.88	8.72	7.69	5.73	5.94	7.32	6.47	4.38	6.40
	Low SES	8.51	18.00	14.06	11.11	15.58	7.29	9.21	13.75	16.22	7.41
	Medium SES	12.46	10.22	10.33	12.56	10.09	9.57	11.30	10.73	12.70	12.30
The Australian National University	High SES	8.55	8.11	9.29	6.32	5.09	6.55	5.77	6.67	7.42	7.18
	Low SES	6.45	3.30	4.17	4.55	6.25	4.17	5.10	3.39	8.80	9.23
	Medium SES	6.62	9.33	6.56	7.30	4.75	5.34	4.33	7.21	8.63	7.56
The University of Western Australia	High SES	9.27	8.89	8.43	7.48	8.82	7.14	7.98	6.63	7.00	7.49
	Low SES	7.87	7.35	7.66	7.12	8.16	6.64	7.06	6.37	7.89	8.11
	Medium SES	8.42	8.66	9.31	7.48	6.56	7.30	6.29	6.65	6.61	7.77
University of Technology, Sydney	High SES	8.11	8.39	8.55	6.65	7.60	7.80	7.60	8.15	8.09	7.66
	Low SES	8.63	8.02	8.82	5.69	7.60	8.60	7.79	6.34	8.28	7.73
	Medium SES	8.14	7.33	9.52	6.06	6.68	6.42	7.14	6.92	8.44	7.81
Monash University	High SES	9.44	8.89	7.70	6.78	7.36	6.82	6.18	6.49	6.57	6.30
	Low SES	12.70	12.19	9.24	7.65	8.26	9.64	7.94	6.32	8.60	6.99
	Medium SES	11.76	9.81	8.78	7.76	6.90	8.01	7.26	6.70	7.74	6.53
The University of Sydney	High SES	7.50	7.39	7.36	6.09	6.26	5.67	5.65	6.07	6.57	6.84
	Low SES	4.50	5.08	4.76	4.18	5.56	4.53	5.07	5.15	6.92	6.32
	Medium SES	6.24	5.15	5.80	4.82	5.32	5.13	4.75	4.41	5.00	4.38
University of New South Wales	High SES	8.58	7.63	6.69	6.42	5.41	6.21	6.15	4.90	6.14	4.91
	Low SES	6.52	7.29	5.49	5.30	5.90	4.54	4.09	4.31	4.51	4.31
	Medium SES	7.52	6.17	6.03	5.08	4.81	5.16	4.31	4.77	4.71	4.77
The University of Melbourne	High SES	5.88	5.47	5.72	5.22	4.03	5.27	5.45	3.88	4.48	3.83
	Low SES	7.16	6.00	4.18	5.21	3.30	3.87	4.66	2.97	2.69	2.90
	Medium SES	6.13	6.21	4.80	4.41	3.46	3.63	4.76	3.87	4.69	3.78

Cohort Analysis

Table 27: Four year completion rates for commencing domestic Bachelor students by Table A Institution (per cent)

State	Table A Institutions	2005-08	2006-09	2007-10	2008-11	2009-12	2010-13	2011-14
New South Wales	Charles Sturt University	43.7	41.3	41.1	41.2	37.7	39.1	38.9
	Macquarie University	47.1	48.2	48.7	49.9	46.9	43.1	43.0
	Southern Cross University	37.9	39.9	40.2	38.9	38.5	40.6	38.7
	The University of New England	37.0	36.2	35.3	35.9	31.7	28.6	29.9
	The University of New South Wales	44.4	45.1	43.6	42.2	45.7	47.9	48.9
	The University of Newcastle	52.3	51.9	48.6	43.6	43.6	40.9	42.0
	The University of Wollongong	54.8	53.5	56.1	55.7	55.5	54.5	51.9
	University of Sydney	64.4	63.5	62.7	63.6	64.3	63.9	60.2
	University of Technology Sydney	52.3	50.4	51.3	50.6	51.2	51.2	51.2
Western Sydney University	51.8	51.6	45.4	45.3	41.9	40.2	40.5	
Victoria	Deakin University	46.8	46.4	47.6	50.6	52.6	52.3	51.2
	Federation University Australia	48.6	48.6	48.5	44.5	40.7	25.5	20.5
	La Trobe University	50.8	50.9	48.1	50.4	48.3	49.0	48.8
	Monash University	50.4	53.5	52.0	54.4	54.9	54.3	55.5
	RMIT University	51.5	50.0	51.9	52.2	55.8	57.4	57.0
	Swinburne University of Technology	47.5	48.5	47.3	46.0	44.4	45.9	43.5
	The University of Melbourne	53.4	55.8	54.4	66.7	71.4	74.9	78.0
	Victoria University	46.7	46.0	43.4	48.9	44.6	40.3	42.4
Queensland	Central Queensland University	31.7	28.3	28.4	28.3	28.0	30.8	29.4
	Griffith University	44.1	45.0	45.8	48.0	47.4	44.2	46.4
	James Cook University	27.8	25.8	25.2	28.4	25.5	27.6	29.8
	Queensland University of Technology	49.3	46.1	45.0	46.3	47.5	46.6	46.8
	The University of Queensland	46.5	41.9	42.8	44.1	40.8	39.7	40.1
	University of Southern Queensland	30.2	26.0	28.3	26.6	29.2	27.8	26.4
	University of the Sunshine Coast	31.2	29.9	34.1	38.2	36.2	37.6	36.2
Western Australia	Curtin University of Technology	45.4	45.7	43.3	45.6	43.6	40.0	40.6
	Edith Cowan University	42.9	42.6	43.3	42.3	39.8	38.7	37.5
	Murdoch University	31.1	24.0	25.2	27.7	28.0	29.1	27.3
	The University of Western Australia	44.8	44.8	42.0	40.4	41.2	41.6	46.9
South Australia	Flinders University	52.3	51.7	51.2	49.1	45.0	44.9	43.0
	The University of Adelaide	50.1	51.3	48.2	47.4	42.6	40.4	39.9
	University of South Australia	46.3	47.1	47.8	48.1	48.7	47.2	45.2
Tasmania	University of Tasmania	50.1	46.8	43.9	42.3	45.5	45.9	42.4
Northern Territory	Batchelor Institute of Indigenous Tertiary Education	37.8	33.3	23.6	21.9	33.0	17.2	31.8
	Charles Darwin University	33.2	29.4	26.8	27.0	28.5	25.9	26.1
Australian Capital Territory	The Australian National University	52.5	52.0	48.0	49.6	55.1	54.5	55.5
	University of Canberra	52.2	50.1	48.9	46.5	49.8	43.9	41.6
Multi-state	Australian Catholic University	61.9	61.9	60.6	59.3	52.9	53.7	49.1
Total	Table A institutions	47.3	46.7	45.9	46.7	46.1	45.1	45.0

Table 28: Four year completion rates for commencing domestic Bachelor students by Table A & B Institution (per cent)

State	Table B Institutions	2005-08	2006-09	2007-10	2008-11	2009-12	2010-13	2011-14
Victoria	University of Divinity	25.9	12.5	16.4	17.7	21.4	23.8	31.0
Queensland	Bond University	51.8	52.8	52.8	53.7	54.4	57.8	54.9
Western Australia	The University of Notre Dame Australia	50.1	50.2	53.4	56.0	52.9	51.6	51.0
Total	Table A and B institutions	47.4	46.8	46.0	46.8	46.2	45.3	45.1

Table 29: Six year completion rates for commencing domestic Bachelor students by Table A Institution (per cent)

State	Table A Institutions	2005-10	2006-11	2007-12	2008-13	2009-14
New South Wales	Charles Sturt University	56.0	54.2	53.7	55.9	53.5
	Macquarie University	71.9	71.9	73.2	73.0	71.3
	Southern Cross University	52.6	54.7	52.7	52.1	52.5
	The University of New England	52.9	51.6	49.4	50.8	49.0
	The University of New South Wales	75.8	74.7	75.5	75.9	78.1
	The University of Newcastle	71.0	70.7	67.1	64.7	64.1
	The University of Wollongong	76.0	75.0	77.4	76.5	76.7
	University of Sydney	84.4	84.2	82.8	81.6	81.9
	University of Technology Sydney	77.1	76.3	77.0	77.1	77.1
	Western Sydney University	68.4	67.7	64.4	63.9	63.1
Victoria	Deakin University	64.6	64.9	65.9	68.6	70.5
	Federation University Australia	65.4	57.7	56.7	53.2	51.3
	La Trobe University	70.4	70.7	69.7	70.1	69.5
	Monash University	74.2	77.1	78.2	79.7	79.3
	RMIT University	68.5	68.7	70.3	72.4	74.8
	Swinburne University of Technology	65.6	66.8	66.1	64.1	65.5
	The University of Melbourne	83.9	84.7	86.4	87.7	88.0
	Victoria University	60.9	62.4	60.2	62.3	57.4
Queensland	Central Queensland University	43.9	41.8	42.2	43.6	42.5
	Griffith University	62.7	62.9	63.3	64.8	64.1
	James Cook University	51.9	51.4	53.1	56.1	55.6
	Queensland University of Technology	67.7	65.5	65.6	66.9	69.3
	The University of Queensland	73.1	70.2	69.8	72.7	71.3
	University of Southern Queensland	43.4	39.7	41.9	42.4	44.4
	University of the Sunshine Coast	48.5	46.8	49.7	54.5	53.2
Western Australia	Curtin University of Technology	66.6	65.8	65.3	65.5	64.2
	Edith Cowan University	56.8	56.7	57.7	57.5	55.4
	Murdoch University	54.1	53.0	50.0	51.6	49.6
	The University of Western Australia	76.9	75.8	76.3	75.6	74.5
South Australia	Flinders University	68.1	67.3	65.8	65.1	62.5
	The University of Adelaide	73.1	74.5	72.4	71.8	70.5
	University of South Australia	62.2	62.6	63.7	63.6	65.8
Tasmania	University of Tasmania	64.5	62.3	61.7	59.5	62.7
Northern Territory	Batchelor Institute of Indigenous Tertiary Education	43.9	35.8	32.6	30.8	36.9
	Charles Darwin University	46.0	44.0	42.4	43.3	41.8
Australian Capital Territory	The Australian National University	79.8	80.6	77.8	79.8	81.0
	University of Canberra	68.7	67.4	64.7	62.8	65.5
Multi-state	Australian Catholic University	75.1	75.0	73.3	73.3	69.5
Total	Table A institutions	67.0	66.8	66.6	67.1	66.7

Table 30: Six year completion rates for commencing domestic Bachelor students by Table A and Table B Institution, %

State	Table A & B Institutions	2005-10	2006-11	2007-12	2008-13	2009-14
Victoria	University of Divinity	44.4	33.0	32.1	37.5	45.9
Queensland	Bond University	71.0	73.3	71.3	73.1	72.8
Western Australia	The University of Notre Dame Australia	68.3	71.4	74.4	77.3	75.2
Total	Table A and B institutions	67.0	66.8	66.6	67.2	66.8

Table 31: Nine year completion rates for commencing domestic Bachelor students by Table A Institution (per cent)

State	Table A Institutions	2005-13	2006-14
New South Wales	Charles Sturt University	62.3	61.3
	Macquarie University	78.7	77.7
	Southern Cross University	59.3	60.7
	The University of New England	61.3	59.5
	The University of New South Wales	82.5	81.9
	The University of Newcastle	77.4	77.0
	The University of Wollongong	82.1	80.9
	University of Sydney	89.1	88.6
	University of Technology Sydney	84.5	83.7
	Western Sydney University	74.4	73.7
Victoria	Deakin University	70.9	71.2
	Federation University Australia	67.8	61.4
	La Trobe University	76.2	76.5
	Monash University	81.2	84.3
	RMIT University	75.0	76.2
	Swinburne University of Technology	70.8	71.4
	The University of Melbourne	90.1	90.3
	Victoria University	66.3	66.9
Queensland	Central Queensland University	51.0	48.2
	Griffith University	69.9	69.9
	James Cook University	60.7	60.6
	Queensland University of Technology	74.7	73.0
	The University of Queensland	80.6	79.3
	University of Southern Queensland	52.3	49.2
	University of the Sunshine Coast	56.6	55.2
Western Australia	Curtin University of Technology	73.7	71.9
	Edith Cowan University	63.5	63.2
	Murdoch University	63.4	62.2
	The University of Western Australia	86.6	86.2
South Australia	Flinders University	74.3	72.7
	The University of Adelaide	79.9	81.1
	University of South Australia	68.6	68.7
Tasmania	University of Tasmania	69.1	67.3
Northern Territory	Batchelor Institute of Indigenous Tertiary Education	52.4	46.9
	Charles Darwin University	53.5	52.0
Australian Capital Territory	The Australian National University	86.9	86.6
	University of Canberra	73.9	73.3
Multi-state	Australian Catholic University	79.3	79.5
Total	Table A institutions	73.6	73.5

Table 32: Nine year completion rates for commencing domestic Bachelor students by Table A & B Institutions (per cent)

State	Table A & B Institutions	2005-13	2006-14
Victoria	University of Divinity	61.7	44.3
Queensland	Bond University	75.4	77.4
Western Australia	The University of Notre Dame Australia	74.7	76.6
Total	Table A and B institutions	73.6	73.5