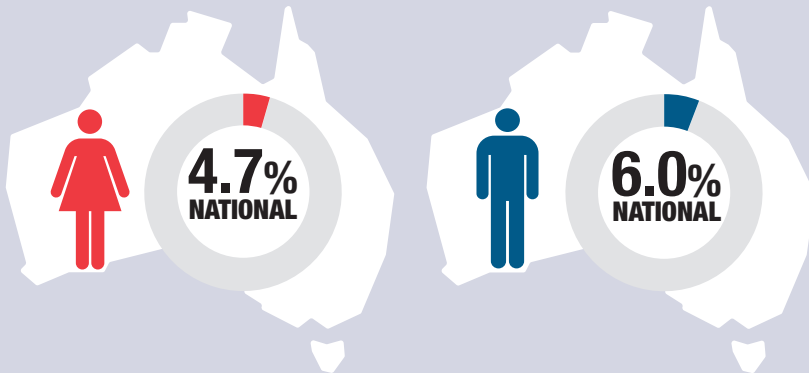


Experienced violence¹ in the last 12 months

Source: ABS



State and territory breakdown

FEMALES	BY STATE	MALES
4.2%	NSW	6.9%
4.6%	VIC	5.7%
5.2%	QLD	4.7%
4.7%	SA	9.6%
5.9%	WA	3.2%
4.7%	TAS ²	-
6.3%	NT ²	-
4.5%	ACT ²	-

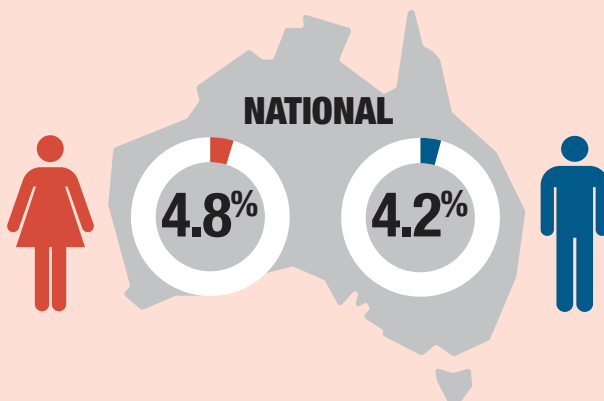
¹ Includes physical and/or sexual violence.

² Male data is unable to be presented separately for Tasmania, Northern Territory and the Australian Capital Territory.

The 2016 PSS was funded by the Department of Social Services under the *National Plan to Reduce Violence against Women and their Children 2010-2022*

Experienced partner¹ emotional abuse in the last 12 months

Source: ABS



State and territory breakdown

FEMALES	BY STATE	MALES
3.8%	NSW	3.9%
5.3%	VIC	4.1%
5.3%	QLD	3.7%
5.4%	SA	7.9%
5.3%	WA	5.0%
4.7%	TAS ²	-
5.8%	NT ²	-
5.9%	ACT ²	-

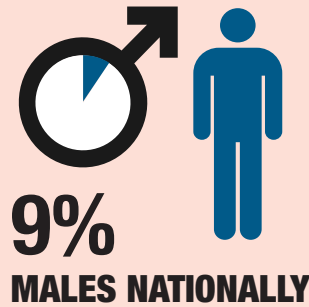
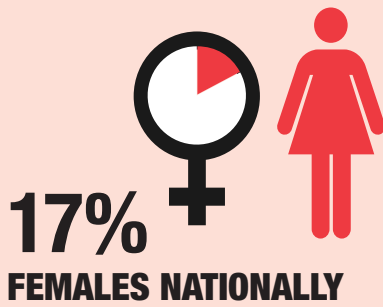
¹ Persons may have experienced emotional abuse by a current and/or previous partner (lived with).

² Male data is unable to be presented separately for Tasmania, Northern Territory and the Australian Capital Territory.

The 2016 PSS was funded by the Department of Social Services under the *National Plan to Reduce Violence against Women and their Children 2010-2022*

Experienced sexual harassment in the last 12 months

Source: ABS



State and territory breakdown

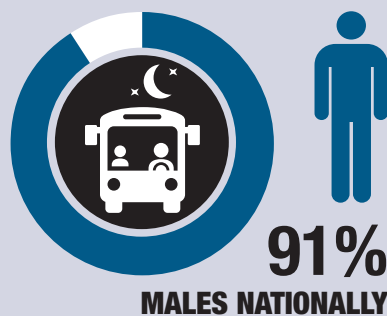
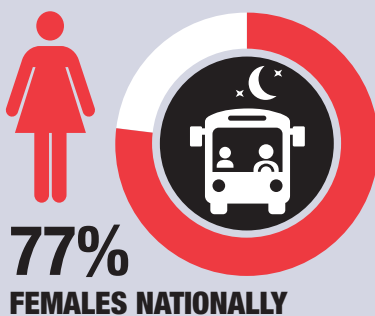
FEMALES	BY STATE	MALES
15%	NSW	9%
20%	VIC	10%
17%	QLD	9%
15%	SA	13%
17%	WA	11%
17%	TAS ¹	-
22%	NT ¹	-
19%	ACT ¹	-

¹ Male data is unable to be presented separately for Tasmania, Northern Territory and the Australian Capital Territory.

The 2016 PSS was funded by the Department of Social Services under the *National Plan to Reduce Violence against Women and their Children 2010-2022*

Used public transport¹ alone after dark in the last 12 months and felt safe²

Source: ABS



State and territory breakdown

FEMALES	BY STATE	MALES
78%	NSW	91%
74%	VIC	87%
79%	QLD	95%
77%	SA	97%
72%	WA	91%
79%	TAS ³	-
71%	NT ³	-
82%	ACT ³	-

¹ Public transport includes buses, trains, trams, taxis, and ferries.

² Proportion of females/males who used public transport alone after dark in the last 12 months.

³ Male data is unable to be presented separately for Tasmania, Northern Territory and the Australian Capital Territory.

The 2016 PSS was funded by the Department of Social Services under the *National Plan to Reduce Violence against Women and their Children 2010-2022*