



# Te Mahere mō te Whakaurunga Matihiko

## The Digital Inclusion Blueprint



Te Tari Taiwhenua  
Internal Affairs

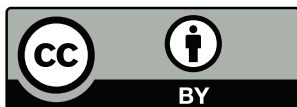
Te Kāwanatanga o Aotearoa

He mea whakaputa i te Poutūterangi 2019 e Te Tari Taiwhenua.  
Pouaka Poutāpeta 805, Te Whanganui-a-Tara 6140, Aotearoa.

ISBN: 978-0-473-47614-4 (tā)  
978-0-473-47630-4 (PDF)

E wātea tuihono mai ana tēnei tuhinga i: [digital.govt.nz](https://digital.govt.nz)

© Manatārua Karauna Aotearoa 2019



He mea raihana tēnei mahi i raro i te raihana Creative Commons Attribution 4.0. Nō reira, e wātea ana koe ki te tārua, tohatoha me te urutau mō te koreutu ngā mahi engari me whakahua e koe nā Te Tari Taiwhenua ngā mahi (me te ū ki ētahi atu ture raihana – tirohia ngā ture raihana Ingarihi mā mā i [creativecommons.org/licenses/by/4.0](https://creativecommons.org/licenses/by/4.0)). Kia mōhio mai, kāore e whakamahia te moko o Te Tari Taiwhenua, te moko o te Kāwanatanga o Aotearoa rānei hei takahi i tētahi wāhanga o Ngā Kara, Ngā Tohu, me Te Ture Whakamaru Ingoa 1981– me tautohu matatiki ki Te Tari Taiwhenua, ā, kua rawa te moko o Te Tari Taiwhenua, te moko o te Kāwanatanga o Aotearoa e whakaputa anō.

Ka taea tēnei tuhinga te whakahua pēnei. Te Tari Taiwhenua. 2019. *Te Mahere mō te Whakaurunga Matihiko*. Te Whanganui-a-Tara: Te Tari Taiwhenua.

# Ngā Kaupapa

Ngā Kaupapa	3
Kupu Whakataki a te Minita	4
Kupu Whakataki a Te Kaiārahi Matihiko Matua a te Kāwanatanga	5
Kōrero whakataki	6
Mō te Mahere	7
Te whakaurunga matihiko mā te tirohanga Māori	8
He aha e hira ai te whakaurunga matihiko?	10
He aha ngā mea e hiahiatia kia whakauru ā-matihiko koe?	11
He aha ngā tauārai?	13
He aha te mea kei te pā mai?	14
He aha te wāhanga o te kāwanatanga?	15
Ngā mahi whai ake	16
Āpitihanga 1: He aha te tikanga o te whakaurunga matihiko	18
Āpitihanga 2: Ngā rōpū e noho mōrea ana ki te aukatitanga	19
Rārangi kupu	20
Ngā tohutoro	21

# Kupu Whakataki a te Minita

## Hōnore Tākuta Megan Woods



E noho ana tātau i tēnei wā e tere hurihuri ai ngā hangarau matihiko e whakaawe ana i te āhua o tā tātau mahi, te toro whakangahau, te whakawhitiwhiti me te āhua o tā tātau kite i te ao. Hei Minita Ratonga Matihiko o te Kāwanatanga, e hiahia ana ahau kia momoho ai ngā tāngata katoa o Aotearoa i roto i tēnei wā matihiko.

Ahako he hou pea te kupu whakaurunga matihiko ki ētahi, ehara i te whakaaro hou. He ao tērā e ōrite ai ngā whai wāhitanga ki te katoa hei whakauru atu mā te whakamahi hangarau matihiko. He whānui ake te whakaurunga matihiko i te whakaaro o “ngā wehenga matihiko”, e arotahi ana ki ngā whāruarua i waenga i te hunga e whakamahi ana i te ipurangi me ngā hangarau matihiko me rātau kāore e whakamahi i ērā.

He matatini te whakaurunga matihiko, ā, he maha ōna āhuatanga. I roto i tēnei mahere, e whā ngā huānga o te whakaurunga matihiko ka whakaurua atu e mātau: whakahihiri, āhei atu, ngā pūkenga me te whakawhirinaki. E whakaata ana ia huānga i ngā wero maha, kaikōkiri rānei e whakaawe ana i ngā rōpū tāngata rerekē.

He wāhanga hira tō te whakaurunga matihiko ki ngā whāinga tiketike rawa kua whakatakotohia e tēnei Kāwanatanga mō Aotearoa, tae atu ki tō tātau paiherenga ki te hāpai i te oranga o tō tātau iwi. Mā te āhei atu ki ngā mōhiohio, ratonga me ngā whakawhitiwhiti kōrero e tukuna ana e te ao matihiko ka nui ake te whai wāhitanga e piki ai te oranga mō ngā tāngata katoa o Aotearoa. E arotahi ana te Kāwanatanga ki te tuitui i ngā taura here kaha ake me te Māori, ka mutu ka ngākau whakahī ahau ki Te Whata Kōrero, te aronga i whakatakotohia e mātau i roto i tēnei mahere hei whakarite ka noho ngā reo o te tangata whenua ki te iho o ā mātau mahi.

Ko te whakaurunga matihiko te tūāpapa mō te auahatanga. Ko ngā pūkenga matihiko taketake me te māramatanga te wāhi tika hei tīmata mō te ako tūroa tonu, pakari hoki i te huringa o ngā hangarau i tō tātau ao. I roto i tēnei ao e āhei ai te katoa ki te ipurangi, ka taea e te katoa te puta hei kaihangā matihiko, kaiauaha me te kaiwhakaara o te panonitanga.

Kua whakatakotohia e mātau tētahi matakitenga tiketike rawa, ā, he nui ngā mahi hei whakatinana i tēnei mō ngā tāngata katoa i Aotearoa. He pai tonu ngā mahi kua oti i tēnei wā, mai i ngā mahi takitahi pērā i te āwhina i tētahi mema o te whānau me tētahi waea atamai hou, ki ngā kaupapa ā-motu whānui e ārahina ana e ngā whakahaere maha, i roto me waho o te kāwanatanga. E hiamō ana ahau ki te tuari i tēnei mahere, ā, koinei te upane tuatahi ki ngā mahi ōrite, toitū mō tētahi Aotearoa manaaki.

# Kupu Whakataki a Te Kaiārahi Matihiko Matua a te Kāwanatanga

## Paul James



E ngā iwi o Aotearoa tēnā rā koutou katoa. E mihi kau ana ki ngā whānau katoa e noho nei i ngā tōpito whenua puta noa i te motu.

Hei Kaiārahi Matihiko Matua a te Kāwanatanga, kei ahau te kawenga mō te ārahi i te panoni matihiko puta noa i te Kāwanatanga. Mahi ngātahi ai mātau ko tōku rōpū puta noa i te rāngai tūmatanui kia momoho ai ngā tāngata katoa o Aotearoa i roto i te wā matihiko. He wāhanga hira te whakaurunga matihiko nō ēnei mahi.

I te mea ka kite koe i tēnei mahere, he maha ngā wāhanga o te kāwanatanga i roto i te whakaurunga matihiko: te ārahi, tūhonohono, tautoko me te whakarato hei whakarite ka whai wāhi mai te katoa me te tautoko, whiwhi painga hoki mai i te ao matihiko.

Kei te pūmau ahau ki te mahi tahi me aku hoa mahi puta noa i te rāngai tūmatanui hei whakarite ka āhei atu te katoa me te whakamahi i ngā mōhiohio tuihono, ratonga me ngā hua e whakaputaina e mātau. Ko te tikanga o tēnei ko te whakamahi i ngā paerewa onāianehei hei whakarite ka wātea mai ngā ihirangi kei ngā paetukutuku kāwanatanga. Me te whai whakaaro hoki ki te hunga kāore anō kia eke tuihono atu mā te whakaiti i ngā tauārai ki te āhei atu me te whakarato i ngā ara tuihono kē e taea ana e mātau. E āhukahuka ana anō ahau i te hiahia ki te hono mai i ngā kaupapa kāwanatanga maha e whakarite ana i ngā āhuatanga o te whakaurunga matihiko.

Ka tirotiro anō mātau ki waho o te kāwanatanga, e mahi ngātahi ana me ngā hāpori puta noa i Aotearoa me ngā iwi maha, hapū, whakahaere kāwanatanga-kore, pakihi me ngā kaupapa atawhai e oti nei i a rātau ngā mahinga hira ki tētahi motu matihiko manaaki, auaha hoki. I te mea kāore e tū tahanga te whakaurunga matihiko, me mātua piri te hono ki ētahi atu kaupapa, tae atu ki ngā mahi mō te ōhanga matihiko, ngā motika matihiko, rangatiratanga raraunga me te anamata o ngā mahi. He mea nui kia ako tētahi mai i tētahi, kia momoho ai ngā tāngata katoa o Aotearoa i roto i tēnei wā matihiko.

Me nui ngā mahi hei mahi kia mātua whakarite ai ka noho a Aotearoa hei wāhi whakaurunga matihiko, i tēnei wā, ā, haere ake. Mā te mahi tahi ka taea e tātau tērā.

Paul James  
Kaiārahi Matihiko Matua a te Kāwanatanga

# Kōrero whakataki

E noho ana tātau i tētahi ao matihiko hurihuri. I roto i ngā tau tekau kua hipa, ko ngā waea atamai he mea pākiki noa iho i te tuatahi e whakamahia e te tokoiti engari ināianei neke atu i te rua piriona kei te whakamahi. Ko ngā hangarau i whāiti ki ngā kōrero paki pūtaiao kei te whakauru haere mai ki ngā mahi o ia rā, mai i te hinengaro hori e takitaki atu ana i ētahi o ngā kamupene nui rawa o te ao ki te tūturutanga whakakaurahi kua kitea e tātau i roto i ngā kēmu waea atamai kua hōrapa whānui. Hei ngā tau i waenga o te 2030, ko te matapae e 24% o ngā mahi onāianei i Aotearoa ka whakaaunoatia pea (PwC, 2018), ā, ka ara ake ko ngā mahi hou kāore tātau i te mōhio i tēnei wā.

I te urunga haere mai o ngā hangarau matihiko ki ō tātau ao, ka pā ki te iwi whānui me te āhua o tā tātau mahi i ngā mahi. Nō reira, he mea nui kia tino whai wāhi te katoa, me te tino whai hua i tō tātau ao matihiko. Koinei te whakaurunga matihiko.

**Ko te matakitenga: kei te whiwhi tātau i ngā mea katoa e hiahiatia ana kia whai wāhi atu, me te tautoko, me te whiwhi painga mai i te ao matihiko.**

E arotahi ana tēnei Mahere mō te Whakaurunga Matihiko (te Mahere), ki te whakarite ka māmā, ka māia te āhei atu me te whakamahi a te iwi whānui katoa o Aotearoa i ngā pūrere matihiko me te ipurangi. E whakaata ana tēnei kua uru mai te ipurangi hei āhuatanga taketake i roto i ō tātau ao o ia rā mō te nuinga o Aotearoa. I te nui haere ake o ngā ratonga e neke ana ki te ipurangi, kei te mahue te hunga kāore e taea te uru atu, te whakamahi rānei i te ipurangi. Hei tauira, kāore e taea e ētahi ngā mahi te tono i runga i te māmā i te mea he maha ngā tukanga tono mahi ka tīmata i runga ipurangi, me te whakaaro o ētahi atu kua mahue kē i ō rātau hoa, whānau hoki e matatau ana ki te matihiko e whakawhitiwhiti ana mā te pāpāho pāpori.

Me mahi tahi ki te whakarite ka whakaurua matihikotia mai te katoa. He wāhanga hira tō te Kāwanatanga, me ngā whakahaere hāpori, iwi, hapū, pakihi, whare pukapuka, ngā whakahaere hāpai iwi, ngā kaupapa atawhai, me ngā mana ā-rohe, ā, he maha ēnei rōpū e mahi ana i roto i tēnei āhuatanga mō ngā tau maha. E whakatakoto ana te Mahere i ngā wāhanga o te kāwanatanga i roto i tēnei hīkoi ki te whakaurunga matihiko: he ārahi, tūhono, tautoko me te whakarato. He whakatakoto hoki i ngā mahi taumata teitei hei tautoko i ēnei wāhanga i te tau e tū mai.

He upane hira te Mahere ki tētahi Aotearoa whakauru matihiko. Koinei te wā kia neke atu te kaha me te ōrite o te tino whaikiko o te anga whakamua mō te iwi whānui o Aotearoa.

Mā te hunga e kaingākau ana, e mahi ana rānei mō te oranga o ngā tāngata o Aotearoa, ā-matihiko, tētahi atu āhuatanga rānei te Mahere. He tono ki a koe kia eke mai ki tēnei hīkoi.

# Mō te Mahere

E whakatakoto ana te Mahere mō te Whakaurunga Matihiko i te matakitenga me te horopaki mō te whakaurunga matihiko i Aotearoa. He tohu i ngā mahi kua mārō kē te haere me ngā whāruarua. E whakaahua ana te Mahere i te wāhanga me ngā upane whai ake mā te kāwanatanga i roto i te hīkoi ki tētahi Aotearoa whakaurunga matihiko.

E ārahina ana te kaupapa mahi whakaurunga matihiko a te Kāwanatanga, me te waihanga me te whakatinana i te Mahere me tētahi mahere mahi tautoko, e te Kaiārahi Matihiko Matua a te Kāwanatanga (GCDO) i Te Tari Taiwhenua. Ka mahi tahi te GCDO me Te Tari Taiwhenua me ētahi atu tari kāwanatanga e tuku ratonga ana kia tautokona ngā huānga e whā o te whakaurunga matihiko.

He mea whāngai mai ngā irirangi o te Mahere e ngā rangahau mō ngā wehewehenga matihiko me te whakaurunga matihiko, i Aotearoa me tāwāhi, me te whakawhitiwhiti ki ngā whakahaere, pakihi me te hunga e mahi ana mō te whakaurunga matihiko i roto i ō rātau hapori.

Kei te puta haere tonu te pūtake taunakitanga mō te whakaurunga matihiko i Aotearoa, arā, kāore tonu tātau i te mārāma me te mōhio ki ētahi o ngā āhuatanga. E whakaata ana te Mahere i tēnei mā te whakatau i te whanaketanga pūtake taunakitanga mō te whakaurunga matihiko hei kaupapa matua.

## Te whānuitanga o te whakaurunga matihiko i roto i te Mahere

Ka taea te kī ko te whakaurunga matihiko he āhuatanga tērā e ōrite ana te whai wāhi o te katoa ki te whakauru ki te iwi whānui mā ngā hangarau matihiko (Te Rōpū Rangahau Whakaurunga Matihiko, 2017). E whakaatahia ana tēnei whakamāramatanga i roto i te matakitenga mō te whakaurunga matihiko kei roto i te Mahere, e kī ana “kei te whiwhi tātau i ngā mea katoa e hiahia ana kia whai wāhi atu, me te tautoko, me te whiwhi painga mai i te ao matihiko”.

Hei whakatutuki i tēnei matakitenga, me āta whakamārama he aha te tikanga o te whakaurunga matihiko. Mō te kaupapa o te Mahere, ko te whakaurunga matihiko ko te pai o te āhei atu, me te āhei ki te whakamahi i runga i te māia, i te ipurangi mā ngā pūrere pērā i ngā rorohiko, waea atamai, paparorohiko hoki. E whakaata ana tēnei arotahi i te āhua o te pāhekoheko a te nuinga ki te ao matihiko, ā, e nui haere kē atu ana ngā ratonga me ngā mahi o ia rā kei te neke ki te ipurangi.

E arotahi ana anō hoki te Mahere ki te whakamana i te hunga kāore i te whakamahi me te hunga he tāmutumutu noa tā rātau whakamahi i te ipurangi kia huri hei kaiwhakamahi kaua te whakapakari i ngā pūkenga o ngā tāngata e toro ana, e whakamahi ana i te ipurangi i roto i ō rātau ao o ia rā.

Ahakoa ka noho ōrite te whakamāramatanga me te matapakitanga mō te whakaurunga matihiko i roto i te wā, ko te mea e hiahia ana kia whakauru matihikotia ka rerekē i te panonitanga haere o te hangarau me te iwi whānui. Hei tauira, ā tōna wā he mea hira pea te mōhio ki te hinengaro hori, te āhei atu ki tētahi hoa rorohiko, te mōhio rānei ki te tuhi waehera rorohiko. Ā ngā tau e heke iho, me rerekē te arotahi kia taea ai tēnei te whakaata.

# Te whakaurunga matihiko mā te tirohanga Māori

## Te Tiriti o Waitangi

E hia ngā tau e haere ana ngā mahi ki te whakapai ake i te whakaurunga matihiko i Aotearoa, ko te nuinga mā te whakapau kaha pūmau o ngā iwi, hapū, hāpori, kāwanatanga, ngā whakahaere kāwanatanga-kore me ngā kaupapa atawhai.

Ka whakatinana ngā mahi a te kāwanatanga ki te whakaurunga matihiko i ngā mātāpono o Te Tiriti o Waitangi. Kei roto i tēnei ko te whakarite ka tuku whakaaro mai te tangata whenua ki ngā whakatau e pā ana ki te whakaurunga matihiko, ka mutu kei ngā taumata katoa rānei o tēnei mahi.

## Te Whata Kōrero: he whata kōrero mō ngā tūmanako o te Māori

Me tautoko ngā mahi e anga atu ana ki te whakaurunga matihiko i Aotearoa i ngā tūmanako me te ahurea o te tangata whenua i tētahi ao matihiko, ā-iwi, ā-tangata hoki. I tino whakaatahia tēnei i roto i ngā whakawhitihiti kōrero me te Māori i te waihangananga o te Mahere.

Kei te waihangatia e Te Tari Taiwhenua i tēnei wā Te Whata Kōrero, he karanga ki te tangata whenua kia tahuri ki te ārahi i ngā take e pā ana ki te whakaurunga matihiko, i te taha o te kāwanatanga. Ka mātua whakarite Te Tari Taiwhenua ka tautokona ngā mātanga Māori me ngā whakahaere Māori whaimana, ki te mahi tahi mō tētahi ao matihiko mātāmua i te ao, e tautokona e ngā iwi taketake.

He whai wāhitanga Te Whata Kōrero mō te tangata whenua ki te kōrerorero ā-rōpū i te whakaurunga matihiko me te whakairi i ō rātau whāinga, tūmanako hoki. Ko te tikanga o tēnei kia kaua e whakaaroaro noa iho mō ngā hiahia paetata, engari ko te anga atu o te titiro ki tētahi anamata e nui haere ake te āhuatanga matihiko. E āhukahuka ana te Mahere i te uara o te whakatinana i ēnei tūmanako, kaua mō te tangata whenua anake, engari mō Aotearoa whānui.

### Ngā raraunga Māori i roto i tētahi ao matihiko

Ko tētahi take ka matapakitia pea mā Te Whata Kōrero ko ngā raraunga Māori, arā ko ngā raraunga me ngā ihirangi mō te Māori, mā te Māori. He taonga ngā raraunga Māori i te taha o Te Reo Māori me te tuakiri Māori, ngā tikanga, ngā uara me ngā tohu. Me whakaute, me mārama, me whakamaru hoki i ngā raraunga Māori i roto i tētahi ao matihiko, pērā anō i te ao kikokiko, ā, kia whakaaroarohia i roto i te horopaki o te whakaurunga matihiko me te rangatiratanga raraunga. He maha ngā whai wāhitanga ka pupū ake mai i tēnei aronga. Ahakoa, kāore te wāteatanga, te whakamahinga me te rokiroki i ngā raraunga Māori i roto i te whānuitanga mō te Mahere, he mea nui te āhukahuka me te kore e titiro ki ēnei take, ka uaua mō te tangata whenua te huānga whakawhirinaki o te whakaurunga matihiko te whakatutuki.



# He aha e hira ai te whakaurunga matihiko?

Mēnā ka whiwhi i te katoa ngā mea e hiahiatia ana kia āhei atu, kia whakamahia hoki te ipurangi, ka noho tētahi tūāpapa pakari mō ngā tāngata katoa o Aotearoa kia ngātahi te anga whakamua i roto i tētahi ao matihiko hurihuri. Ka whakatuwherahia e te ao matihiko ngā whai wāhitanga mō te tokomaha, ahakoa ko te āhei atu ki tētahi kaiwhakamāori reo rotarota e noho ana ki wāhi kē i te motu, te waihanga i tētahi hapori tuihono e ōrite ana ngā kaingākaoutanga, wheako ora rānei, te whai i tētahi wāhanga tuihono pai mō tētahi pakihi iti.

Ka raru haere tonu te hunga kāore e āhei atu ki te ipurangi, kāore hoki e whakamahi i tēnei. Ko te nuinga o ngā kōrero o te pūrongo *Out of the Maze: Building Digitally Inclusive Communities* o te Whiringa-ā-rangi 2018 mai i ngā tāngata o Aotearoa e aukatia mai ana i te whakauru ki te matihiko. I kōrero te hunga i uiuitia mō te pānga o te kore e āhei atu ki te ipurangi hei aukatitanga, noho taratahi, kore mana me te iti o te whai wāhitanga (Elliot, 2018). E aronui ana te pūrongo “he pānga kino tō te noho momotu ā-matihiko mai ki te hunga e noho whakaraerae ana i ngā wā whakaraerae, uaua rānei, te kauneke haere rānei i tētahi huringa ā-noho” (Elliott, 2018).

*“Ko te tikanga me āwhina te hangarau i a koe, engari ki te kore koe e mōhio me pēhea te whakamahi, ka tino whetōhia koe e te hangarau.”<sup>1</sup>*

*“Ahakoa kei te hiahia ahau kia whai wāhi ahau ki te ao, ki ahau nei kāore e taea e au. Ānō nei ehara noa iho ahau i te whaitake.”*

*“Ki ahau kua kore au e tino mate ki te hāereere, ka taea noa iho e au te tiro ki te Pukamata ka kite i tōku whānau.”*

I kite te pūrongo o te tau 2017 te *Digital New Zealanders: The Pulse of our Nation (The Pulse of our Nation)* kei te whakaatu ngā rangahau o tāwāhi mēnā ka iti te whakaurunga matihiko “ko te mutunga atu ka iti ake te oranga me te whai wāhitanga, me ētahi atu momo takaonge” (Digital Inclusion Research Group, 2017). E tohu ana ngā rangahau ā-ao he wāhanga nui tō te whakaurunga matihiko i roto i te oranga o ngā tāngata. Ka whakamātautauhia ēnei kitenga i roto i te horopaki o Aotearoa hei wāhanga o tētahi pou tarāwaho putanga, inenga hoki mō te whakaurunga matihiko e waihangatia ana e Te Tari Taiwhenua.

E tohu ana hoki ngā rangahau ā-ao i ngā painga ōhanga o te whakaurunga matihiko, ahakoa he iti ngā rangahau hei whakaatu i tēnei i roto i te horopaki o Aotearoa. E kī ana te *The Pulse of our Nation* ko ngā tātaitanga tuatahi (e ai ki ngā raraunga ā-ao) ka hua i te whakaurunga matihiko arowhānui neke atu i te \$1 piriona i te tau o ngā painga ōhanga ki Aotearoa (Digital Inclusion Research Group, 2017).

1 Ko tēnei tango kupu me ētahi atu e whakaaturia ana i roto i ngā pouaka kākāriki i tēnei tuhinga nā te hunga i whakawhiti kōrero me mātau i roto i te wā whakawhitiwhiti kōrero mō te Mahere.

# He aha ngā mea e hiahiatia kia whakauru ā-matihiko koe?

Mō te kaupapa o te Mahere, ko te tangata, whānau, hapori rānei kua whakaurua ā-matihiko ka uru māāmā, whai kiko hoki ki ngā pūrere matihiko whaiutu, e wātea ana hoki ki te tokomaha me tētahi tūhono ipurangi,<sup>2</sup> ā, ka taea e rātau te tino whakamahi i roto i ō rātau ao o ia rā. Ka rerekē haere tēnei whakamāramatanga i roto i te wā i te rerekē haeretanga o ngā hangarau.

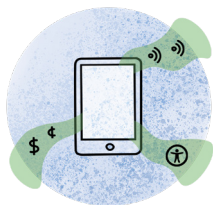
## E whā ngā huānga o te whakaurunga matihiko

E whā ngā huānga motuhake e hiahiatia ana kia whakaurua ā-matihikotia: whakahihiri, āhei atu, pūkenga me te whakawhirinaki. E whakamārama ana te **Hoahoa 1** i raro i ia huānga.

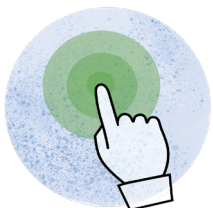
### Hoahoa 1: E whā ngā huānga o te whakaurunga matihiko



**Whakahihiri:** Te mārama ka pēhea te āwhina a te ipurangi me te hangarau matihiko i a tātau ki te tūhono, ako, te toro rānei ki ngā whai wāhitanga, me te aha ka whai pūtake whaitake tātau ki te torotoro me te ao matihiko.



**Āhei Atu:** Te āhei atu ki ngā ratonga matihiko, ratonga, pūmanawa, ihirangi hoki e ū ana ki ō tātau hiahia ki te utu e taea e tātau te utu; ka mutu ka taea te tūhono ki te ipurangi i tō wāhi mahi, wāhi noho, wāhi tākaro hoki. He huānga whānui te āhei atu, e taea ana te wehewehe ki ngā wāhanga e toru: tūhonotanga, whaiutu me te wātea ki te tokomaha.



**Ngā Pūkenga:** Te mōhio me pēhea te whakamahi i te ipurangi me ngā hangarau matihiko mā ngā āhuatanga e tōtika ana, e whai hua ana mō tātau katoa.



**Whakawhirinaki:** Te whakawhirinaki ki ngā ratonga ipurangi, tuihono hoki; me te matatau ki te ao matihiko hei whakahaere i ngā mōhiohio whaiaro me te mōhio me pēhea te karo i ngā mahi tinihanga, ngā whakawhitiwhiti whakamamae me ngā mōhiohio whakakotiti. Ka pā anō tēnei huānga ki te haumaruru tuihono, te mārama ki te matihiko, te angitu me te pakaritanga.

Ko ngā mōhiohio āmiki ake i pēhea te waihanga i te whakamāramatanga me ngā huānga mō tētahi horopaki o Aotearoa kei te **Āpitihanga 1**.

2 Tērā pea mā tētahi tūhononga aunui, tākaka rānei, Wi-Fi, ngā raraunga pūkoro rānei.

# He aha ngā tauārai?

Ko ngā tauārai ki te whakaurunga matihiko ka taea te whakamahere ki ngā huānga e whā: whakahihiri, āhei atu, ngā pūkenga me te whakawhirinaki. He tino rerekē ngā tauārai ka pā ki ngā tāngata, ā, me whai i ngā aronga rerekē hei turaki i ēnei. Hei tauira, kāore e taea e ētahi te tūhono ki te ipurangi i te kāinga, nā te utu, te iti rānei o te hanganga. Ka āhei atu ētahi ki te ipurangi, engari kāore pea i te mōhio me pēhea te kimi me te whakamahi mōhiohio, ratonga hoki e kaingākau ana rātau. He pūkenga pea ō ētahi me te tūhononga e hiahia ana rātau, engari kāore i hangaia ngā ihirangi me ngā ratonga e hiahia ana rātau ki te whakamahi ki te āhua e pai ana mō rātau. Ko tētahi atu tauārai ki te whakaurunga matihiko ko te kaha. Kāore pea e whai wā, he ngoikore rānei ki te ako, te urutau, te whakamahi hoki i ngā hangarau matihiko me ngā pūhara.

He maha pea ngā tauārai kei mua i ētahi tāngata, e whakawhānui ake i ngā pānga o te kore e whakauru ā-matihikotia. E pā ana ngā tauārai ki te whakaurunga matihiko i te nuinga o te wā ki ngā raruraru waiwai, pērā i te rawakore me te kore ōritetanga. Hei tino whakatutuki i te whakaurunga matihiko i Aotearoa, me whakarite e tātau ngā raruraru waiwai me ngā tohumate. E whakaarohia ana ngā uauatanga waiwai i te **Hoahoa 2**.

## Hoahoa 2: Ngā uauatanga waiwai



## Ko wai kāore i te whakaurua ā-matihikotia?

Kua oti ētahi rangahau hei tautuhi i ngā rōpū e noho mōrea ana kei kore e whakaurua ā-matihikotia i Aotearoa. Ngā rōpū i tautuhia i roto i te *The Pulse of our Nation* ko ngā kaumātua, te hunga hauā,<sup>3</sup> te hunga e noho ana i wāhi taiwhenua, me ngā whānau whai tamariki e noho ana i roto i ngā hāpori pōhara (Digital Inclusion Research Group, 2017).

E whakaatu ana ngā rangahau ko te Māori te hunga ka iti ake te whakauru ā-matihiko tēnā i te taupori whānui ake (Lips, 2015). He mea nui kia mārama ki ngā tauārai e pā mai ana ki ngā hāpori me ngā whakahaere Māori, ngā iwi, hapū, me te mahi tahi me rātau ki te waihanganga i ngā rongoā. Ko Te Whata Kōrero te wāhi tīmatanga mō tā tātau mahi tahi. E rārangi ana tēnei i te whārangi 8.

3 I ngā wā kāore i te āta kōrero ki ngā rangahau tauwhāiti, ka whakamahia e mātau te kōrero te “hunga hauā”, e whakaata ana i ngā kupu o te Rautaki Hauātanga o Aotearoa.

Mai i tā mātau whakawhitiwhiti me ngā whakahaere, tāngata hoki e whakapau kaha ana mō te whakaurunga matihiko i roto i ō rātau hapori, i ako mātau mō ētahi atu rōpū e whai pānga pea ki ngā tauārai ki te whakaurunga matihiko, tae atu ki te hunga he mate hinengaro me te hunga kāore i te whai kāinga noho pūmau. Me oti ngā mahi atu anō hei tautuhi ko wai te hunga e hiahia ana kia tautokona, ā, me ō rātau whakahihiritanga mō te hono tuihono, me ngā tauārai hoki. Ko te rārangi whānui i tautuhia i roto i te *The Pulse of our Nation*, me ētahi atu rōpū i tautuhia i roto i ngā whakawhitiwhiti kōrero, kei roto i te **Āpitihanga 2**.

## He pēhea te kaha o tā tātau whakaurunga matihiko i tēnei wā?

He iti noa ngā raraunga kei a mātau mō ngā wheako o ngā tāngata mō te whakaurunga matihiko i Aotearoa, ā, kei te waihanga tonu mātau i ngā whakaritenga ka whakaaetia puta noa i ngā huānga e whā. Kei reira anō ētahi mōhiohio mō te hunga pea ka āhei atu ki te ipurangi, engari ko ngā raraunga mō ētahi atu hauātanga o te whakaurunga matihiko he putuputu noa. Anei tētahi tirohanga poto o ngā mea e mōhio ana mātau mai i ngā wheako ā-motu, ā-ao hoki:

### Whakahihiri

I te UK, i kitea e tētahi rangahau a Loyds Bank i te 2018 e 28% o te hunga neke atu i te 60 kāore i te whakamahi i te ipurangi, 84% e kī ana kāore e taea e rātau te āwhina kia hono tuihono (Lloyds Bank, 2018).

### Te āhei atu

I kitea e te Tatauranga Whānui 2013 e 82% o te taupori o Aotearoa he urunga ipurangi ā-kāinga, he pikitanga tēnei mai i te 67% i te tau 2006. Mō te Māori, he 67% i te tau 2013, he pikitanga tēnei mai i te 47% i te tau 2006 (Tatauranga Aotearoa, n.d.). Ka wātea mai ngā raraunga o te Tatauranga Whānui 2018 ā te 2019.

I whakaatu te rangahau a UK Lloyds Bank e 25% o te hunga he hauātanga kua rēhitatia kāore i te hono tuihono, he whā whakareanga ake te nui ake o tēnei i tō te nuinga atu o te taupori (Lloyds Bank, 2018).

### Ngā pūkenga

Tata ki te 5% o ngā kaiwhakautu i roto i tētahi rangahau OECD 2014 mō ngā pūkenga o te hunga pakeke i Aotearoa kāore i te paku mōhio ki te whāwhā rorohiko, he kore pūkenga rorohiko taketake rānei, ā, 13% kāore i whakamahi i tētahi rorohiko i ia rā. Tata ki te 45% o ngā kaiwhakautu he iti noa ngā pūkenga taketake (Te Tāhuhu o Te Mātauranga me Hīkina Whakatutuki, 2016).

### Whakawhirinaki

I kitea e te Rangahau Pāpori Whānui o Aotearoa 2016 e 74.6% o te hunga i tauwhiti tuihono i kī he haumarū, he tino haumarū rānei ki a rātau (Tatauranga Whānui, 2017).

*“Kei te tūturu haere ake te āhua o ngā tinihanga, he maha kei te tāwhai i ngā kamupene pono. Me nui ake ngā mātauranga hei wetewete i ngā mea tika ake.”*

*“Ko tētahi whakahihiritanga nui ko te noho tūhonohono ki te whānau me ngā hoa me te whakaaro whakaurunga.”*

*“Ko te ipurangi he tino hāneanea, ā, i te nuinga o te wā koinā tētahi o ngā mea tuatahi ka poroa ki te iti haere te pūtea.”*



# He aha te mea kei te pā mai?

Tuku ratonga hira ai ngā whakahaere hapori, pakihi, whare pukapuka, ngā whakahaere hāpai iwi, ngā kaupapa atawhai me ngā mana ā-rohe puta noa i ngā huānga o te whakaurunga matihiko. He maha ēnei whakahaere e mahi ana i roto i tēnei wāhanga mō ngā tau maha.

Kua tīmata ngā mahi kia mārama ai ki ngā kaupapa katoa e whakarite ana i te whakaurunga matihiko. Hei tauira, e taurima ana te 20/20 Trust i tētahi mahere tuihono o ngā kaupapa whakaurunga matihiko,<sup>4</sup> he mahere whakaurunga matihiko tuihono tā InternetNZ,<sup>5</sup> ā, i whakahaerehia e Te Tari Taiwhenua tētahi whakarārangitanga o ngā kaupapa whakaurunga matihiko ā-hapori i te tīmatanga o te 2018. Me oti he mahi atu anō kia mārama ai ki ngā kaupapa katoa a te kāwanatanga e hāpai ana i te whakaurunga matihiko me te whakahiato i te tirohanga whānui. Mā te tino mārama ki ngā mahi kei te mahia ka māmā ake te ako mai i a mātau tonu kia mārama ai he aha ngā mea kei te pai te mahi, he aha atu anō ngā mahi ka taea, ā, kei hea ngā whai wāhitanga ki te hono tahi hei whakapiki i te uara mō ngā tāngata katoa o Aotearoa.

Mai i ngā mōhiohio kua kohia tae noa mai ki tēnei wā, e rua ngā momo mahinga whānui kei te kite mātau: ko ērā e tautoko hāngai i ngā tāngata me ngā hapori kia whakauru ā-matihikotia me rātau e tautoko ana i te pūnaha whānui ake. E rārangi ana ēnei i raro:

- 1. Te tautoko i ngā tāngata me ngā hapori:** He whakataunga hāngai ēnei e āwhina ana me tētahi huānga whakaurunga matihiko kotahi, neke atu rānei i te taumata ā-motu, ā-hapori, ā-whānau, ā-tāngata rānei. E whakarite ana ētahi whakataunga i ngā hiahia o ngā rōpū tauwhāiti puta noa i ngā huānga maha, ā, ko ētahi he whakarite i tētahi huānga kotahi mō ngā tāngata tokomaha. He maha ngā mahi kei te haere, neke atu i te 170 ngā kaupapa i te tīmatanga o te 2018 (hāunga ngā kaupapa maha a te kāwanatanga i roto i tēnei wāhanga). He maha ngā kaupapa nei kei te arotahi ki ngā huānga āhei atu me ngā pūkenga o te whakaurunga matihiko, ā, he iti ake kei te arotahi atu ki te whakahihiri me te whakawhirinaki. Ka kitea te whānuitanga o ngā mātai take mō ngā kaupapa whakaurunga matihiko i roto i te *The Pulse of our Nation* (Digital Inclusion Research Group, 2017).
- 2. Te tautoko i te pūnaha whakaurunga matihiko whānui ake:** Kei roto i tēnei ko ngā kaupapa hei whakatipu i te māramatanga o Aotearoa ki te whakaurunga matihiko mā te rangahau me te tātaritanga; te waihanga me te whakatinana i ngā paerewa me ngā pou tarāwaho hei tautoko i ngā āhuatanga o te whakaurunga matihiko; me te honohono haere i waenga i ngā kaupapa whakaurunga matihiko rerekē. He maha ēnei kaupapa he mea waihanga e ngā tari kāwanatanga, tae atu ki te whakarārangi haere i ngā hātepe papatono a te kāwanatanga,<sup>6</sup> te tūtohunga o te āhei atu, me te Wānanga ā-Tari mō te Whakaurunga Matihiko i whakaurua mai inā tata nei. E whakahaerehia ana ētahi atu e ngā whare wānanga, ngā whakahaere kaupapa aroha, ngā rōpū wetewete whakaaro motuhake.

4 <https://2020.org.nz/programmes/digital-inclusion-map/>

5 <https://digitaldivide.nz/>

6 <https://www.data.govt.nz/assets/Uploads/Algorithm-Assessment-Report-Oct-2018.pdf>

# He aha ngā mahi whai ake?

Kia whānui rawa ngā pānga, me ōrite, me tino mārama ki te āhua o te whakaurunga matihiko, he mahere me pēhea te tae atu, me ngā whakaritenga me ngā raraunga tautoko hei whakaatu i te anga whakamua. Me whakatau anō ētahi o ngā kaupapa matua me te mōhio kei hea ngā whāruarua, kia taea ai ngā haumitanga te tuku ki ngā wāhi e tino hiahiatia.

I tēnei wā, kāore anō kia whakaae tahitia ngā whakaritenga mō te whakaurunga matihiko i Aotearoa, ngā raraunga whai kiko, matawhānui hoki kia tino mōhio ai ki te hunga kāore i te whakaurua ā-matihikotia. Kei te arahina e Te Tari Taiwhenua ngā mahi mō tētahi pou tarāwaho putanga, inenga hoki mō te whakaurunga matihiko, ā, ko te tikanga ka puta he hukihuki i te tīmatanga o te 2019. Ko te tūāpapa o te pou tarāwaho ko ngā huānga e whā o te whakaurunga matihiko, ā, ka hāngai ki te Pou Tarāwaho Paerewa Noho a Te Tai Ōhanga.<sup>7</sup>

I tēnei wā, ko te tikanga he wehe kē te mahi a ngā kaupapa whakaurunga matihiko ki te whakarite i ngā hiahia tauwhāiti i roto i ō rātau hāpori. Ki te kore e whakariteritea, e kitea ngā mahi onāiane, he uaua te kite i ngā whāruarua me te kite e pēhea ana te hono tahi o ngā mea katoa. Ahakoa kei te moata tonu, kei te kitea atu he hua i tēnei wā i roto i ngā mahi o nā noa nei ki te whakakotahi haere i tētahi hononga kaupapa aroha o ngā kaiwhakarato whakaurunga matihiko, kaitaunaki hoki,<sup>8</sup> tae atu ki te Wānanga ā-Tari Whānui mō te Whakaurunga Matihiko, e whakakotahi haere ana i ngā tari e mahi ana i ngā āhuatanga mō te whakaurunga matihiko.

Mai i tā mātau whakawhitiwhiti me ngā rōpū hāpori me ngā kaiwhakarato ratonga whakaurunga matihiko, i kite mātau ko te maha o rātau he iti te pūtea, he whakawhirinaki ki ngā kaitūao, ā, kāore i te ōrite ngā puna pūtea. E hiahiatia ana ngā haumitanga anamata ki tēnei wāhi.

Hei whakarite i ngā tauārai ki te whakaurunga matihiko, he mea nui te tiroiro ki ngā uauatanga pūnahanaha, kaikōkiri hoki, e ai ki te **Hoahoa 2: Ngā uauatanga waiwai**, me ngā tohumate e nui ake te kitea. He mea nui anō te mōhio ki ngā aronga rerekē e hiahiatia ana hei whakarite i ngā tauārai rerekē.

Ina whakaaetia ana ngā kaupapa matua, ā, kua kitea ngā whāruarua, ka whakatakotohia te take mō te haumitanga ā-kāwanatanga i ngā wāhi hira. Ko ngā mahi pea e marohitia ana ko te whakawhānui ake i ngā kaupapa e whakahaerehia ana i tēnei wā, te whakarite i ngā kaupapa hou mō ngā wāhi whāruarua. Ka hangaia ngātahitia ngā whakataunga me ngā hāpori hāngai me ngā kaiwhakarato whakaurunga matihiko, hei whakarite kei mua, kei waenganui hoki ngā tirohanga o te hunga e aukatia ana.

7 <https://treasury.govt.nz/information-and-services/nz-economy/living-standards>

8 <https://digitalinclusionalliance.nz/>

# He aha te wāhanga o te kāwanatanga?

E ai ki ngā kōrero i runga ake, me mahi ngātahi kia mātua whakarite ai ka whakaurua matihikotia ngā tāngata katoa i Aotearoa, me ngā whakaaro hira mai i ngā iwi, hapū, pakihi, whare pukapuka, ngā kaupapa hāpai iwi, ngā kaupapa atawhai me te kāwanatanga ā-rohe, ā, me ētahi atu.

He wāhanga nui tō te kāwanatanga ki te ārahi me te tautoko kia taea ai te whakauru matihiko i ngā tāngata katoa o Aotearoa. E ārahina ana ēnei mahi e Te Tari Taiwhenua.<sup>9</sup> Kua wehea te wāhanga o te kāwanatanga ki ngā wāhanga e whā:

- **Ārahi:** Te noho hei pūkenga pono mō te whakaurunga matihiko; te mahi tahi i roto me waho o te kāwanatanga ki te whakarite i ngā wāhi whakaarotau me te aronga anamata; te ārahi mā te whakatauiria me te whakarite kei te wātea ngā ihirangi matihiko a te kāwanatanga, ā, ka taea ngā ratonga tuihono te whakamahi e te katoa; te kohikohi raraunga hei ine i te anga whakamua ki te whakaurunga matihiko.
- **Tūhono:** Te hura kia kitea ngā mahi hei whakarite i ngā āhuatanga o te whakaurunga matihiko; te tuitui hono i waenga tāngata, ngā kaituku pūtea, ngā kaupapa me ngā hāpori i roto me waho o te kāwanatanga e mahi ana mō te whakaurunga matihiko hei whakarahi ake i te pānga.
- **Tautoko:** Te whakarato tautoko me ngā mōhiotia ki ngā hāpori, whakahaere me ngā pakihi e mahi ana ki te whakarite i ngā raru whakaurunga matihiko; te whakatakoto i te take mō te haumitanga hei whakarite i ngā wāhi whakaarotau i tautuhia.
- **Whakarato:** Te whakarato i ngā ratonga e whakarite ana i ngā āhuatanga o te whakaurunga matihiko (puta noa i ngā tari rerekē); te mahi tahi me ngā hāpori, ētahi atu tari me te rāngai whānui ake hei rongoā i ngā raruraru me te whakapiki i te whakaurunga matihiko.

Kua tīmata kē ngā mahi i ia wāhanga e whā nei. Engari, he nui tonu ngā mahi e hiahiatia ana kia tūturu, kia ōrite te kauneke o ngā mahi ki te whakaurunga matihiko i te taumata pūnaha. E rārangi ana tētahi tirohanga o ngā mahi whai ake mō te 2019 me tētahi tohu mō te aronga anamata i te wāhanga whai ake.

---

9 Ko te whiti tuatahi o te wāhanga “whakarato” he aweretanga. Ahakoa he wāhanga tō Te Tari Taiwhenua ki te honohono haere i ēnei kaupapa ina taea, ka noho te kawenga ki te/ngā tari e whakarato ana i te ratonga.

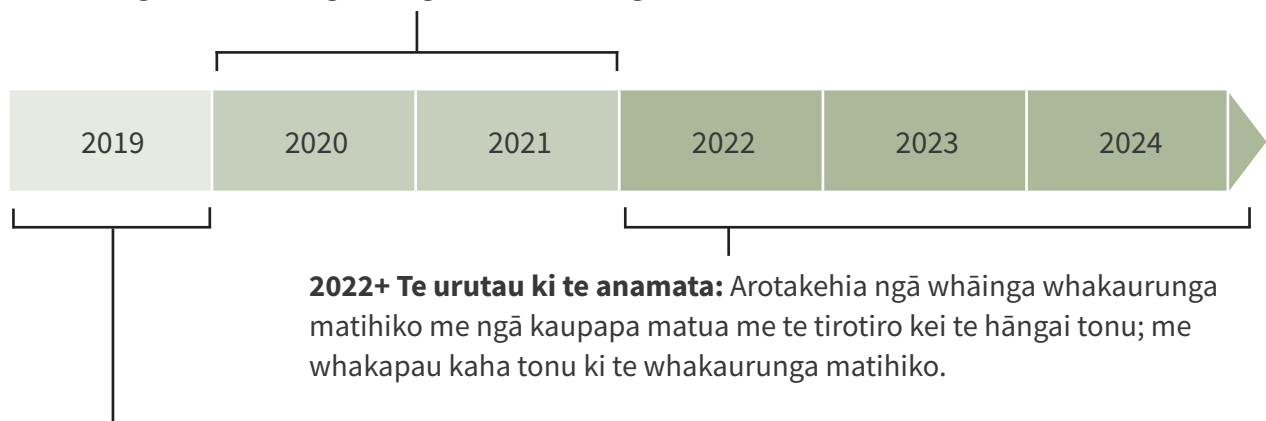
# Ngā mahi whai ake

E whakaatu ana te **Hoahoa 3** i te wātaka taumata teitei mō ngā mahi a te kāwanatanga mō te whakaurunga matihiko. Hei te 2019, ka arotahi ki te waihanga i te tūāpapa kaha. Kei roto i tēnei ko te whakatau i ngā putanga, ngā inenga, ngā kaupapa matua me ngā whakaritenga haumitanga. Kei roto anō i tēnei ko te honohono haere me te whakaatu kia kitea ngā mahi mō te whakaurunga matihiko.

He wāhi tīmatanga noa te Mahere mō te anga whakamua kaha, toitū ki tētahi Aotearoa e wātea ana te matihiko. E mōhio ana mātau ka rerekē ngā āhuatanga i roto i te wāhanga whakaurunga matihiko, ā, ko te hiahia kia urutau tātau ki tērā. Ka whakahou haerehia e mātau te mahere mahi hei whakaata i ngā mea e hiahiatia ana me ngā huringa ki tō tātau mōhio ki te whakaurunga matihiko.

## Hoahoa 3: Wātaka taumata teitei mō ngā mahi

**2020/2021 Te whakakī i ngā whāruarua:** Te whakakorahi angitu; te waihanga aronga hou; te ine anga whakamua.



**2019 Te waihanga i te tūāpapa:** Ngā putanga me ngā ine; te tautuhi i ngā wāhi whakaarotau e whā mō te arotahi; te tautohu whāruarua; te whakamātautau i ngā whakataunga iti noa.

## Ka aha hei te tau 2019?

Kei te waihangatia e Te Tari Taiwhenua he mahere mahi āmiki me pēhea te whakarato i ngā wāhanga e whā o te kāwanatanga ā te 2019. Kua tīmata kē ētahi o ngā mahi.

Ko ngā wāhi taumata teitei hei kōkiri mā te kāwanatanga ā te 2019 kei raro e rārangi haere ana i raro i ngā wāhanga e whā o te ārahi, tūhono, tautoko me te whakarato.

## Ārahi

- Me waihanga haere tonu i tētahi tūāpapa mō te whakaurunga matihiko i Aotearoa (kua tīmata).
- Te whakaae ki ngā putanga e tōminatia ana mō te whakaurunga matihiko, ā, me pēhea ine (kua tīmata).
- Te whakahaere tātaritanga whāruarua kia kite ai he aha ngā mea kei te ngaro kia taea ai ngā kaupapa matua i whakaaetia te whakarato.



- Te tūhura me pēhea te ine i te momoho o ngā kaupapa whakaurunga matihiko a te kāwanatanga (kua tīmata).
- Te whakapau kaha ki te whakarite ka wātea mai ngā ihirangi me ngā ratonga tuihono katoa a te kāwanatanga ki te tokomaha (kua tīmata).

## Tūhono

- Te mōhio ki ngā kaupapa whakaurunga matihiko onāiane kei roto me waho o te kāwanatanga, me ngā mea kei te mahi pai hei whakarite i tēnā, i tēnā o ngā huānga e whā.
- Te tūhono ki ngā kaupapa a te kāwanatanga hei whakapiki i ngā putanga whakaurunga matihiko mō Aotearoa (kua tīmata).
- Me mātua whakarite ka wātea tūmatanui ngā mōhiohio me ngā kōrero mō ngā kaupapa whakaurunga matihiko puta noa i Aotearoa kia taea e ngā kaiwhakarato, kaiwhakamahi, kaituku pūtea hoki te tuitui hononga me whakarahi ake i ngā pānga pai.

## Tautoko

- Me whakatau ngā whakaritenga me ngā kaupapa matua mō ngā haumitanga me ngā whakapau kaha ā muri ake.
- Me whakatakoto he take mō te haumitanga hei whakatutuki i ngā kaupapa matua i whakaaehia.
- Me whakatū Te Whata Kōrero i te taha o te tangata whenua (tirohia te whārangi 8).

## Te whakarato

- Whakamātautauhia ngā kaupapa iti hei whakarite i ngā tauārai ki te whakaurunga matihiko me ngā hapori.
- Te whakarato haere tonu i ngā ratonga e whakarite ana i ngā huānga o te whakaurunga matihiko mō ngā tāngata o Aotearoa.

## Rapua ētahi mōhiohio anō

Ka kitea anō e koe he kōrero anō mō ngā mahi mō te rōpū whakaurunga matihiko i Te Tari Taiwhenua i [digital.govt.nz](https://digital.govt.nz). Ka tuhi rangitaki auau te rōpū, ka mutu kei reira anō ngā hono ki ētahi atu rauemi.

### Ngā mātāpono mō te whakapau kaha ki te whakaurunga matihiko

Ka whai mātau i ēnei mātāpono ina whakahaerehia ana ā mātau mahi katoa hei whakarite e ahu ana ki ngā painga mō ngā tāngata katoa o Aotearoa:

- Te whakatutuki i ā mātau kawenga i raro i Te Tiriti o Waitangi
- Te mahi tahi me ētahi atu i roto me waho o te kāwanatanga
- Te mahi tahi me ngā rōpū e huapaehia ana e ngā tauārai ki te rapu i ngā rongoā whaitake mō rātau anō
- Me tuwhera te tuari i ngā akoranga i pā mai me te anga whakamua ki ō tātau whāinga

# Āpitihanganga 1: He aha te tikanga o te whakaurunga matihiko

## Te whakamārama i te tikanga o te whakaurunga matihiko

I roto i te Mahere, ko te tangata, whānau, hāpori rānei kua whakaurua ā-matihiko, ka whai uru mā mā, whai kiko rānei ki ngā pūrere matihiko whaiutu, e wātea ana hoki ki te tokomaha me tētahi tūhono ipurangi, ā, ka taea e rātau te tino whakamahi i roto i ō rātau ao o ia rā.

He mea toro ēnei kupu mai i tētahi whakamāramatanga e marohitia ana i te *The Pulse of Our Nation*:

*“Ko te tangata kua whakaurua ā-matihikotia ko ia tērā kei te āhei atu ki ngā pūrere whaiutu, e wātea ana hoki ki te tokomaha, ka mutu i te wā me te wāhi e pai ana ki a rātau, tae atu ki te whakahihihi, ngā pūkenga me te whakawhirinaki ki te whakamahi i te ipurangi hei whaiwhai me te whakatutuki i ngā putanga pāpori me te ōhanga whaitake.”* (Digital Inclusion Research Group, 2017)

I roto i te Mahere, kua whakapotohia e mātau tēnei whakamāramatanga me te whakawhāiti kia taumata teitei te aronga. I tāpirihia e mātau te urunga ipurangi “whaitake” ki te whakamāramatanga, e whakaata ana i ngā urupare mō ngā mea e hira ana ki te iwi. I tāpirihia anō e mātau ngā whānau me ngā hāpori ki te whakamāramatanga, e whakaata ana, mō te Māori, he mea nui te whai whakaaro ki te painga takitini me te painga takitahi.

## Te whakamārama i ngā huānga o te whakaurunga matihiko

Kua whakamahia ngā āhuatanga rerekē o ngā huānga e whā o te whakahihihi, ngā pūkenga me te whakawhirinaki i roto i ngā mana ā-ture o tāwāhi me ngā pūrongo maha i tuhia i roto i te horopaki o Aotearoa. Kei roto i tēnei ko te pūrongo o te tau 2017 *The Pulse of our Nation* (Digital Inclusion Research Group, 2017) me te tuhinga whakaaro *Solving Digital Divides Together* a InternetNZ (InternetNZ, 2018). Engari, ko ngā mea i whakaurua ki ia huānga e whā he rerekē i tēnā pūrongo, i tēnā pūrongo, ā, i tēnā mana ā-ture, i tēnā mana ā-ture, me te aha he rerekē aua huānga anō i ētahi wā.

Ko ngā huānga e whā e whakamahia ana e mātau ko ērā e whakaatahia ana i roto i te *The Pulse of our Nation*, engari me ngā taitara poto ake. Ko te whāinga kia poto te whakamāramatanga o ngā huānga e whā, ehara i te mea koinei ake, engari kei te whakaata tonu i ngā wāhi hira.

I te mea he huānga whānui te ‘āhei atu’, kua wehea e mātau ki ngā wāhanga hira e toru: te wātea (o ngā ihirangi), te whaiutu (o ngā pūrere me tētahi tūhononga), me te tūhonohono (te whai hanganga).

I whakawhānuitia anō te huānga ‘whakawhirinaki’ kia uru mai ai ngā whakaaro o te haumaruru tuihono, māramatanga matihiko, angitu me te pakaritanga. E whakaata ana tēnei i te nekehanga i roto o Piritana Nui ki te whakaaroaro mō te angitu me te māramatanga matihiko, me te whai whakaaro ki ngā huatau mō te haumaruru tuihono, pakari hoki i roto i te horopaki o Aotearoa.

# Āpitihanga 2: Ngā rōpū e noho mōrea ana ki te aukatitanga

I roto i te pūrongo *The Pulse of our Nation* ko te hunga e whai ake te hunga e nui ake te tūpono kāore e whakaurua ā-matihikotia<sup>10</sup> (Digital Inclusion Research Group, 2017):

- ngā whānau whai tamariki i roto i ngā hapori pōhara
- te hunga e noho ana i ngā wāhi taiwhenua
- te hunga hauā
- ngā kaiheke me ngā rerenga ko te reo Ingarihi tō rātau reo tuarua
- ngā taiohi Māori me ō Te Moananui-a-Kiwa
- te hunga hara onāiane me mua
- ngā kaumātua<sup>11</sup>

I tautuhia anō e te pūrongo ngā rōpū i roto i te pūnaha mātauranga me te wāhi mahi ka whai hua mai i te whiwhi pūkenga matihiko, tae atu ki:

- ngā ākonga kāore i te whai wāhi ki ngā hangarau matihiko i ō rātau kāinga
- ngā kaiako kāore i te uru atu ki ngā whakawhanaketanga akoranga ngaio mō te whakaako me ngā hangarau matihiko
- ngā ākonga e wehe ana i te kura kāore i te whai tohu hangarau matihiko
- ngā ākonga kura tuatoru kāore i te whai pūkenga whatutoto mō ngā akoranga e hiahiatia ana
- ko te hunga kāore i te whai i ngā pūkenga matihiko matua hei whakauru ki te ahumahi, kei roto kē rānei i te ahumahi
- ngā kaiwhakahaere o ngā pakihi iti me ngā whakahaere huamoni-kore.

I te wā o ngā whakawhitiwhiti kōrero mō te Mahere, i tautuhia anō ngā rōpū e noho mōrea ana kei kore e whakaurua ā-matihikotia i Aotearoa:

- Māori
- Ngā iwi o Te Moananui-a-Kiwa
- te hunga he kāore he kāinga pūmau
- te hunga he iti ngā moni whiwhi
- te hunga kāore i te tino matatau ki te pānui me te tuhituhi
- te hunga he mate hinengaro
- te hunga kāore i te hiahia ki te hono ki te ipurangi
- ngā kaiārahi matua i roto i te rāngai tūmatanui me te tūmataiti (ngā pūkenga hei urutau ki te taiao hurihuri)
- te hunga kore mahi

E ai ki te Mahere, ehara i te mea ko te katoa i roto i tēnei rōpū ka āraia ki te whakaurunga, ā, ka uru ētahi tāngata ki ngā rōpū maha, ā, ka pā pea ki ngā tauārai maha.

10 He mea waihanga tēnei rārangi mō te pūrongo, e whai whakaaro ana ki ngā rangahau o Aotearoa me tāwāhi.

11 I ahu pū mai ngā kupu o tēnei rārangi mai i te pūrongo tonu.

# Rārangi kupu

E whakamārama ana te rārangi kupu i raro i ngā kupu Māori kāore pea i te tino mārama ki ngā kaipānui me te whakamārama i te tikanga i roto i te horopaki o te Mahere. I whakamahia e mātau ngā tuhinga āpiti i roto i ngā kōrero te Mahere mō ngā whakamāramatanga o ngā kupu reo Māori kāore i roto i te reo Ingarihi o Aotearoa.

Kupu	Tikanga o te kupu, e whakamahia ana i roto i te Mahere
Hapori	He rōpū tāngata he ōrite tētahi āhuatanga (pērā i te rohe whenua, taipakeke, kaingākau, pūnaha whakaponu rānei).
Rangatiratanga raraunga	Ko te whakaaro kei raro ngā raraunga i ngā hanganga ture, kāwana hoki o te whenua, te rōpū rānei i kohia mai ai.
Ngā wehenga matihiko	Koinei ngā whāruarua i waenga i te hunga kei a rātau ngā huānga e whā o te whakaurunga matihiko (whakahihiri, āhei atu, ngā pūkenga, whakawhirinaki) me te hunga kāore i a rātau ērā. E whakamahia ana tēnei kupu i roto i ngā mahi o mua mō tēnei take. I roto i te Mahere e whakamahia ana e mātau ko te ‘whakaurunga matihiko’ kē.
Whakauru ā-matihiko	I tēnei wā, ko te tangata, whānau, hapori rānei kua whakaurua ā-matihiko ka whai uru māmā, whai kiko ki ngā pūrere matihiko whaiutu, e wātea ana hoki ki te tokomaha me tētahi tūhono ipurangi, ā, ka taea e ia te tino whakamahi i roto i tōna ao o ia rā. Ka rerekē haere tēnei whakamāramatanga i te rerekē haeretanga o ngā hangarau.
Whakaurunga matihiko	He āhuatanga tērā e ōrite ana te whai wāhi o te katoa ki te whakauru ki te iwi whānui mā ngā hangarau matihiko (Te Rōpū Rangahau Whakaurunga Matihiko, 2017).
Ao matihiko	E kōrero ana mō te ipurangi, ngā pūrere matihiko, ngā pūrere atamai me ētahi atu hangarau matihiko me te āhua o tā tātau whakamahi.
Te ipurangi	He pūnaha ā-ao o ngā rorohiko ā-whatunga puta noa i te ao e taea e ngā tāngata ngā mōhiohio te tuari me te whakawhitiwhiti ki a rātau anō.
Tuihono	Te tūhono ki te ipurangi.

# Ngā tohutoro

Digital Inclusion Research Group. (2017). *Digital New Zealanders: The Pulse of our Nation*. He mea tiki atu i: <https://www.mbie.govt.nz/assets/218c439f72/digital-new-zealanders-the-pulse-of-our-nation.pdf>

Elliot, M. (2018). *Out of the Maze: Building Digitally Included Communities*. He mea tiki atu i: <https://static1.squarespace.com/static/5bd0d99e16b6404fe9018538/t/5bdf7f9b575d1f0d19337766/1541373904877/OutOfTheMaze.pdf>

InternetNZ. (2018). Solving Digital Divides Together. He mea tiki atu i: [https://internetnz.nz/sites/default/files/submissions/Solving\\_Digital\\_Divides.pdf](https://internetnz.nz/sites/default/files/submissions/Solving_Digital_Divides.pdf)

Lips, M. (2015, September 25). The digital divides persist in New Zealand. *Stuff.co.nz*. He mea tiki atu i te 16 Whiringa-ā-rangi, 2018 mai i: <https://www.stuff.co.nz/technology/digital-living/72415698/the-digital-divides-persist-in-new-zealand>

Lloyds Bank. (2018). *UK Consumer Digital Index 2018*. He mea tiki atu i: [https://www.lloydsbank.com/assets/media/pdfs/banking\\_with\\_us/whats-happening/LB-Consumer-Digital-Index-2018-Report.pdf](https://www.lloydsbank.com/assets/media/pdfs/banking_with_us/whats-happening/LB-Consumer-Digital-Index-2018-Report.pdf)

Te Tāhuhu o Te Mātauranga me Hīkina Whakatutuki. (2016). *Skills and Education: Survey of Adult Skills*. He mea tiki atu i: [https://www.educationcounts.govt.nz/\\_data/assets/pdf\\_file/0005/173516/Skills-and-Education-Aug-2018.pdf](https://www.educationcounts.govt.nz/_data/assets/pdf_file/0005/173516/Skills-and-Education-Aug-2018.pdf)

PricewaterhouseCoopers New Zealand. (2018). *Will robots really steal our jobs? An international analysis of the potential long-term impact of automation*. He mea tiki atu i: <https://www.pwc.co.nz/pdfs/2018pdfs/impact-of-automation-on-jobs-Feb-2018.pdf>

Tatauranga Aotearoa. (n.d.). 2013 Census ethnic group profiles: Māori. He mea tiki atu i te 16 Whiringa-ā-rangi, 2018 mai i: [http://archive.stats.govt.nz/Census/2013-census/profile-and-summary-reports/ethnic-profiles.aspx?request\\_value=24705&tabname=Motorvehicles,andphones,fax,andInternet](http://archive.stats.govt.nz/Census/2013-census/profile-and-summary-reports/ethnic-profiles.aspx?request_value=24705&tabname=Motorvehicles,andphones,fax,andInternet)

Tatauranga Aotearoa. (2017). Well-being statistics: 2016 — corrected. He mea tiki atu i te 16 Whiringa-ā-rangi, 2018 mai i: <https://www.stats.govt.nz/information-releases/well-being-statistics-2016>



Whakapā atu ki te rōpū whakaurunga matihiko o Te Tari Taiwhenua i [digitalinclusion@dia.govt.nz](mailto:digitalinclusion@dia.govt.nz),  
tērā rānei;

Te whakaurunga matihiko i Te Tari Taiwhenua  
Pouaka Poutāpeta 805  
Te Whanganui-a-Tara, 6140



**Te Tari Taiwhenua**  
**Internal Affairs**

**Te Kāwanatanga o Aotearoa**

